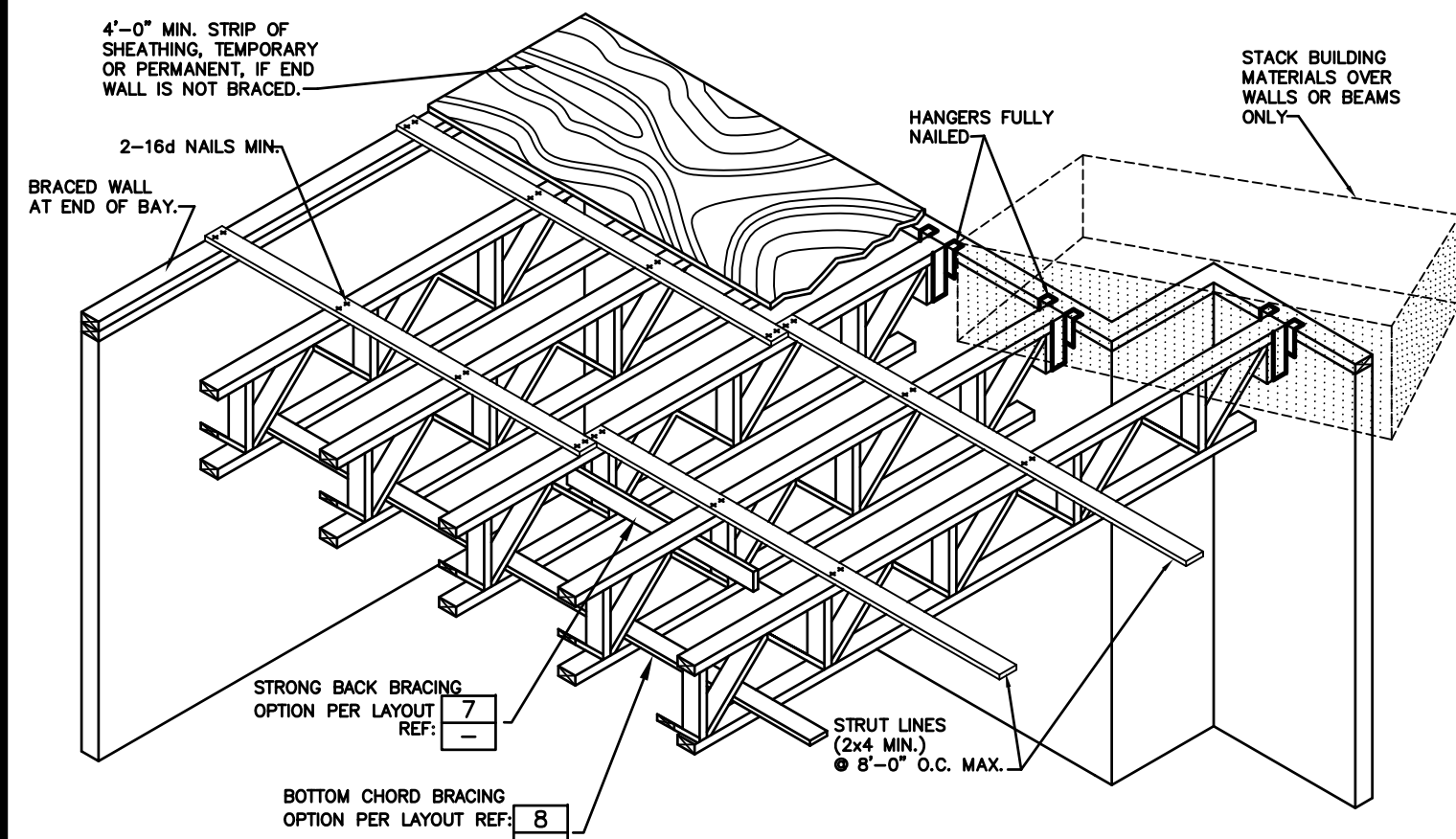
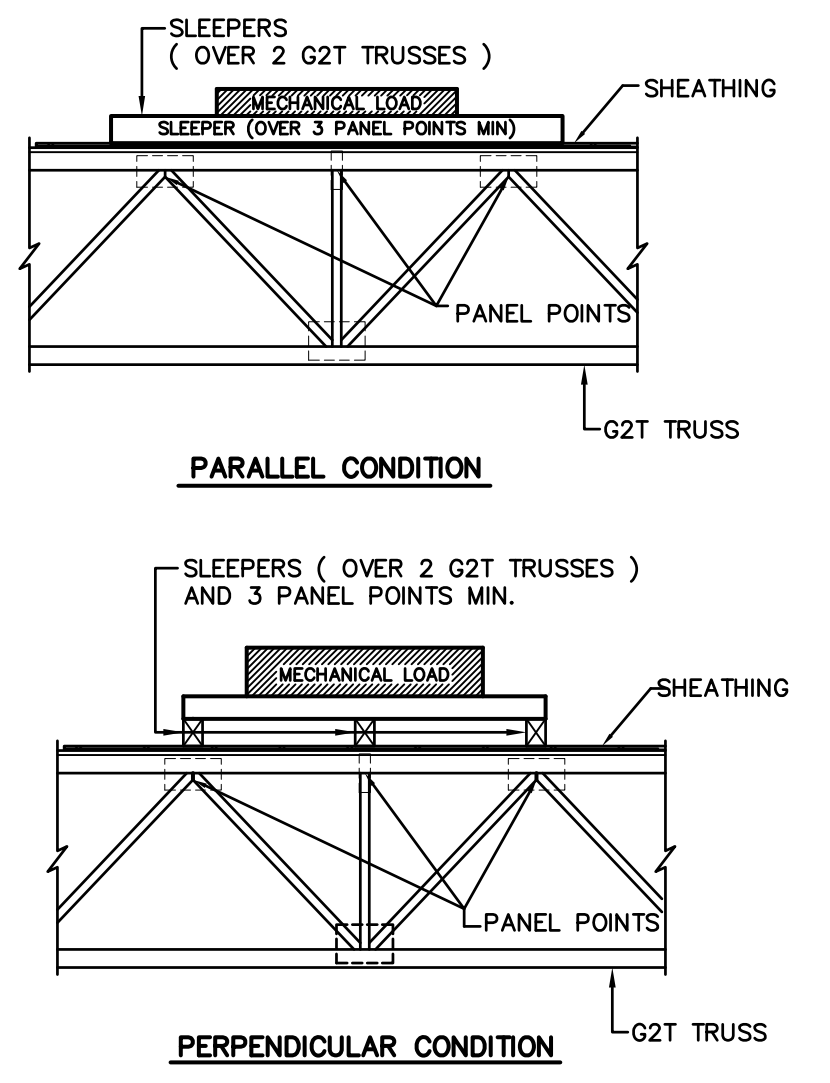


ATTENTION

NO ONE SHOULD BE ALLOWED ON ANY G2T JOIST UNTIL ALL HANGERS & CROSS BRIDGING, IF REQ'D, AND TEMPORARY BRACING ARE IN PLACE AND NAILED SECURELY. SERIOUS ACCIDENTS MAY OCCUR UNLESS CARE IS TAKEN TO PROPERLY BRACE DURING CONSTRUCTION. THIS DETAIL SHOULD BE USED AS A GUIDELINE FOR BRACING.



1 ERECTION BRACING

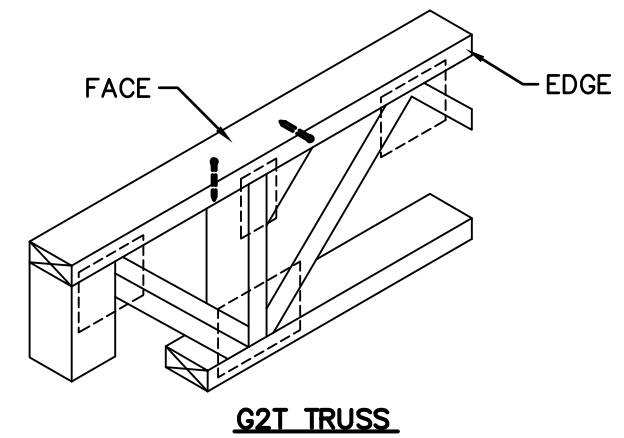


- NOTES**
- COORDINATE MECHANICAL LOCATIONS WITH LAYOUT AND G2T CALCULATIONS
 - SLEEPERS MUST BE LOCATED AT PANEL POINTS

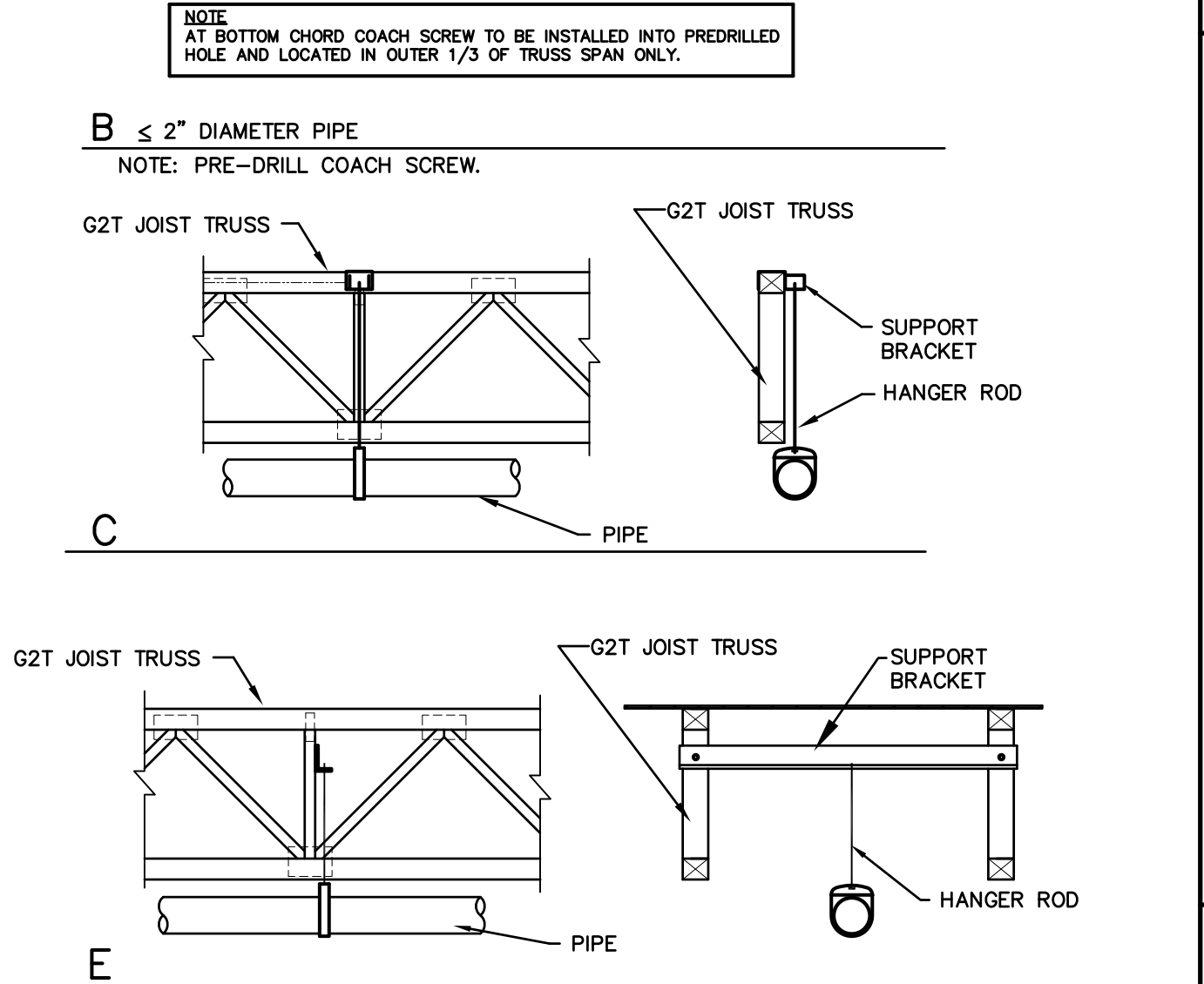
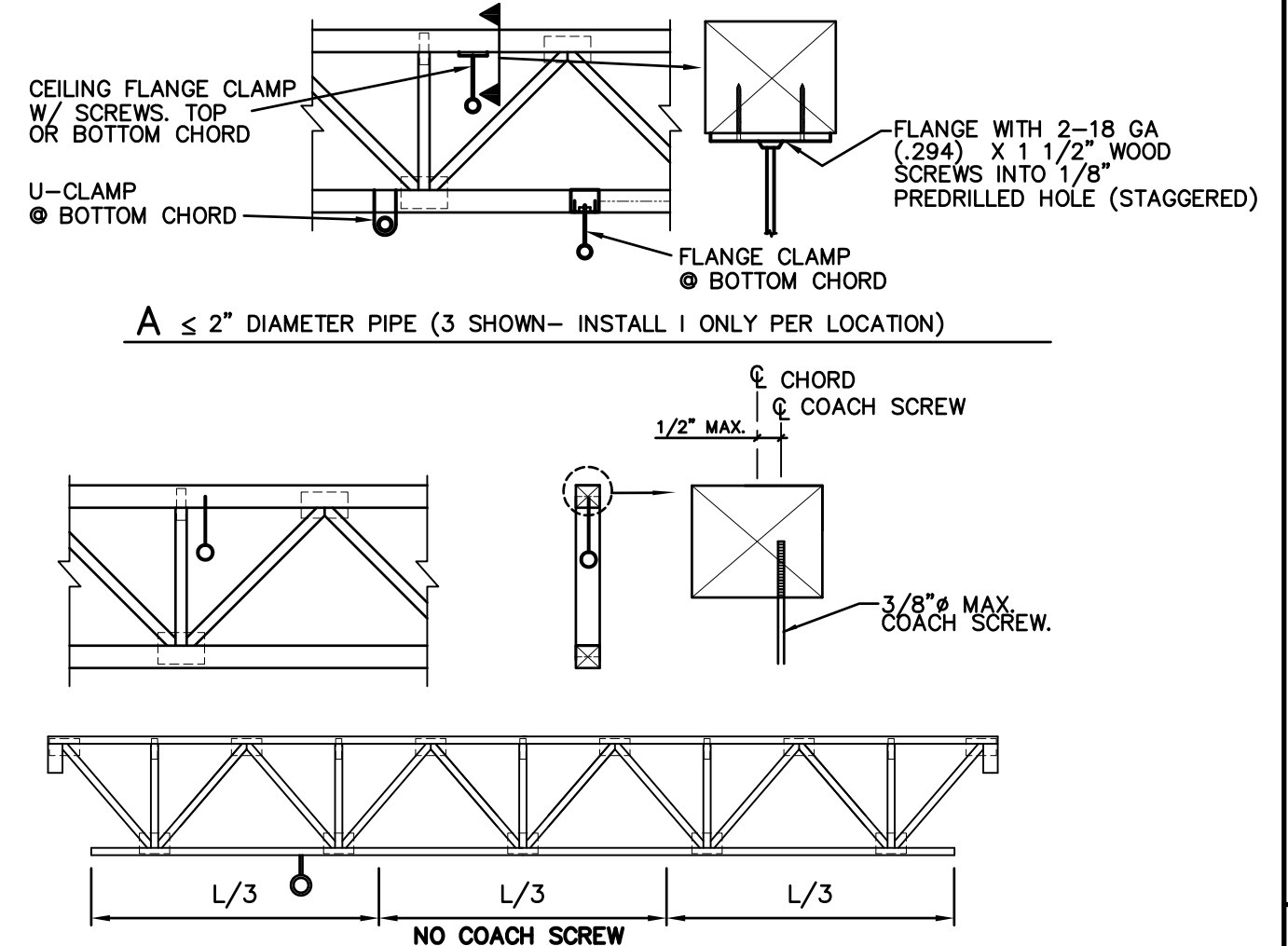
2 MECHANICAL LOADS ON G2T TRUSSES

G2T TRUSS NAILING CHART
(MINIMUM ON CENTER SPACING)

NAIL TYPE	NAIL SIZE	MSR (M)	LSL (L)		LVL (V)	
			FACE	EDGE	FACE	EDGE
8d	BOX COMMON 0.113"x2 1/2"	2"	2"	3"	1"	1"
			2"	3"	1"	1"
10d	BOX COMMON 0.128"x3"	3"	3"	4"	1"	1"
			3"	4"	1"	1"
12d	BOX COMMON 0.128"x3 1/4"	3"	3"	4"	1"	1"
			3"	4"	1"	1"
16d	BOX COMMON 0.148"x3 1/4"	4"	4"	6"	2"	2"
			4"	6"	2"	2"

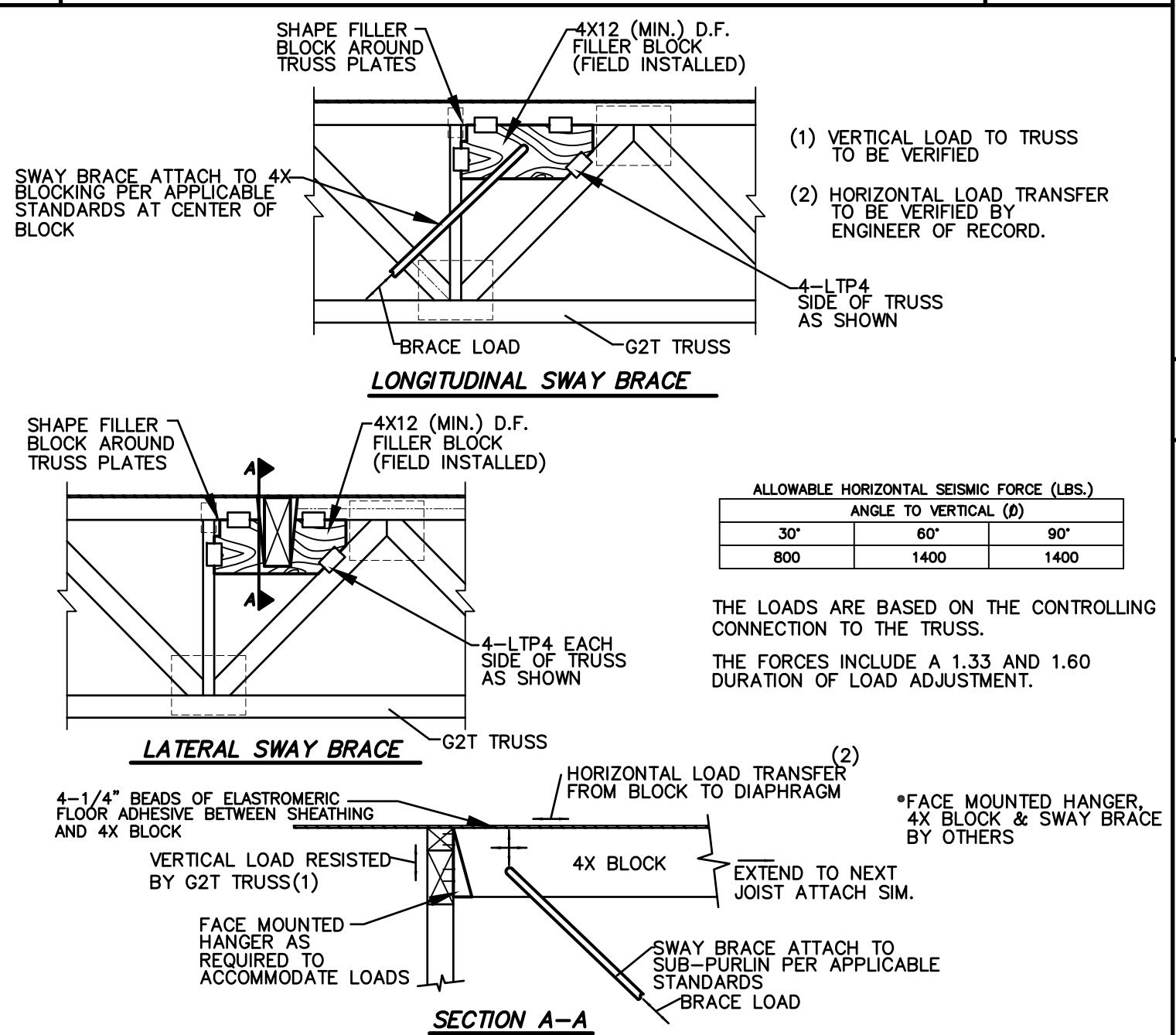


3 NAILING CHART

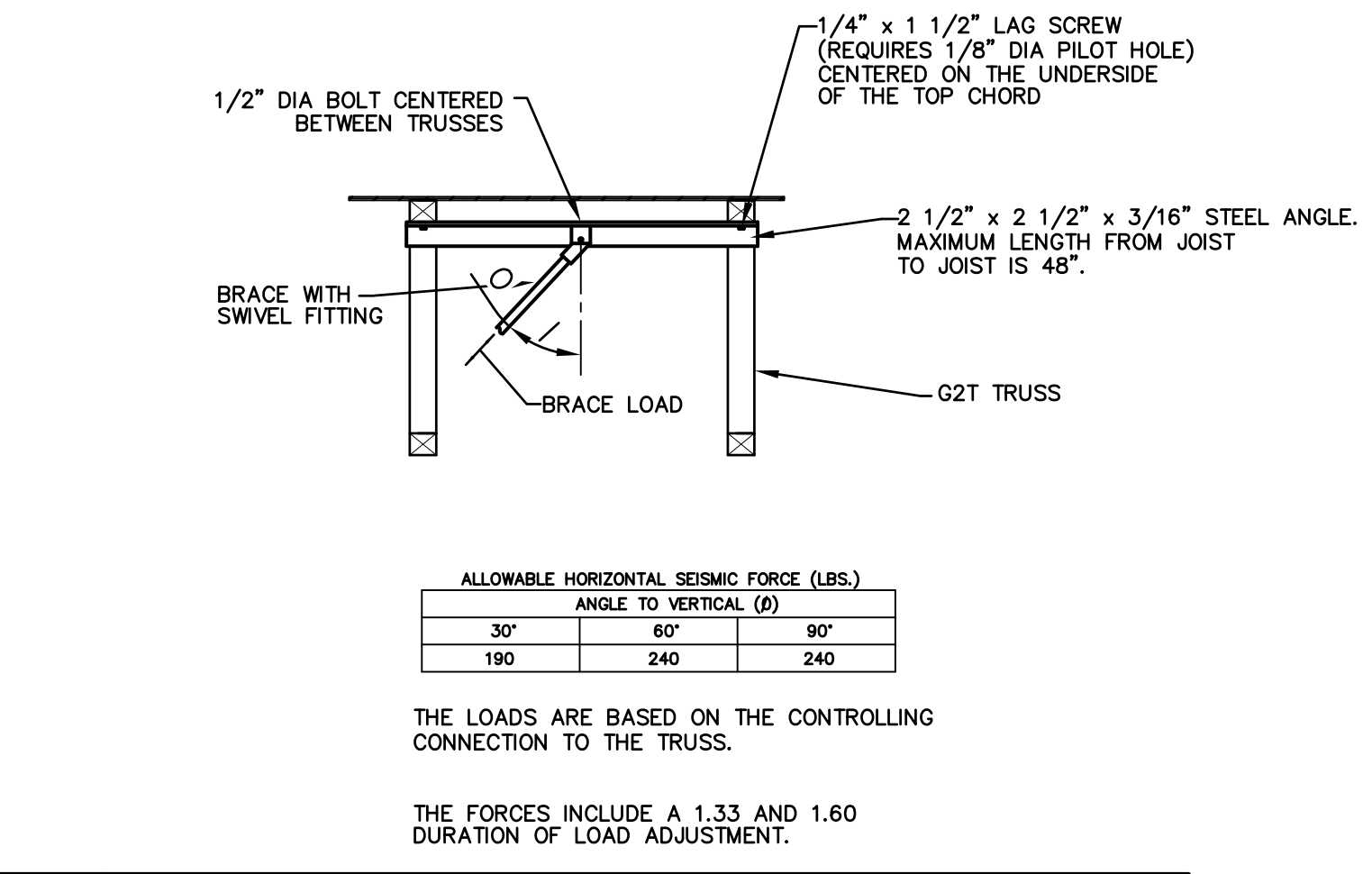


- NOTES:**
- WOOD SCREWS WITH A MAXIMUM DIAMETER OF 1/8" MAY BE USED ANYWHERE ON THE TOP CHORD OF THE PCT TRUSS WITH A PRE-DRILLED PILOT HOLE, UNLESS NOTED OTHERWISE ON PLANS.
 - DO NOT DRILL HOLES, DRIVE HEAVY SCREWS, OR USE LAG BOLTS IN THE BOTTOM CHORD OF G2T TRUSS, EXCEPT AS NOTED.
 - COORDINATE ATTACHMENT OF SPRINKLER PIPE GREATER THAN 3" DIAMETER AND LARGER WITH G2T TRUSS LAYOUT AND CALCULATIONS. IT IS ASSUMED THAT THE ENGINEER OF RECORD HAS ALLOWED FOR BRANCH SPRINKLER LINES 3" DIAMETER AND LESS IN THE DESIGN DEAD LOAD.
 - ALL SPRINKLER AND SPRINKLER ATTACHMENTS INCLUDING WOOD SUPPORTS ARE TO BE FURNISHED AND INSTALLED BY OTHERS.

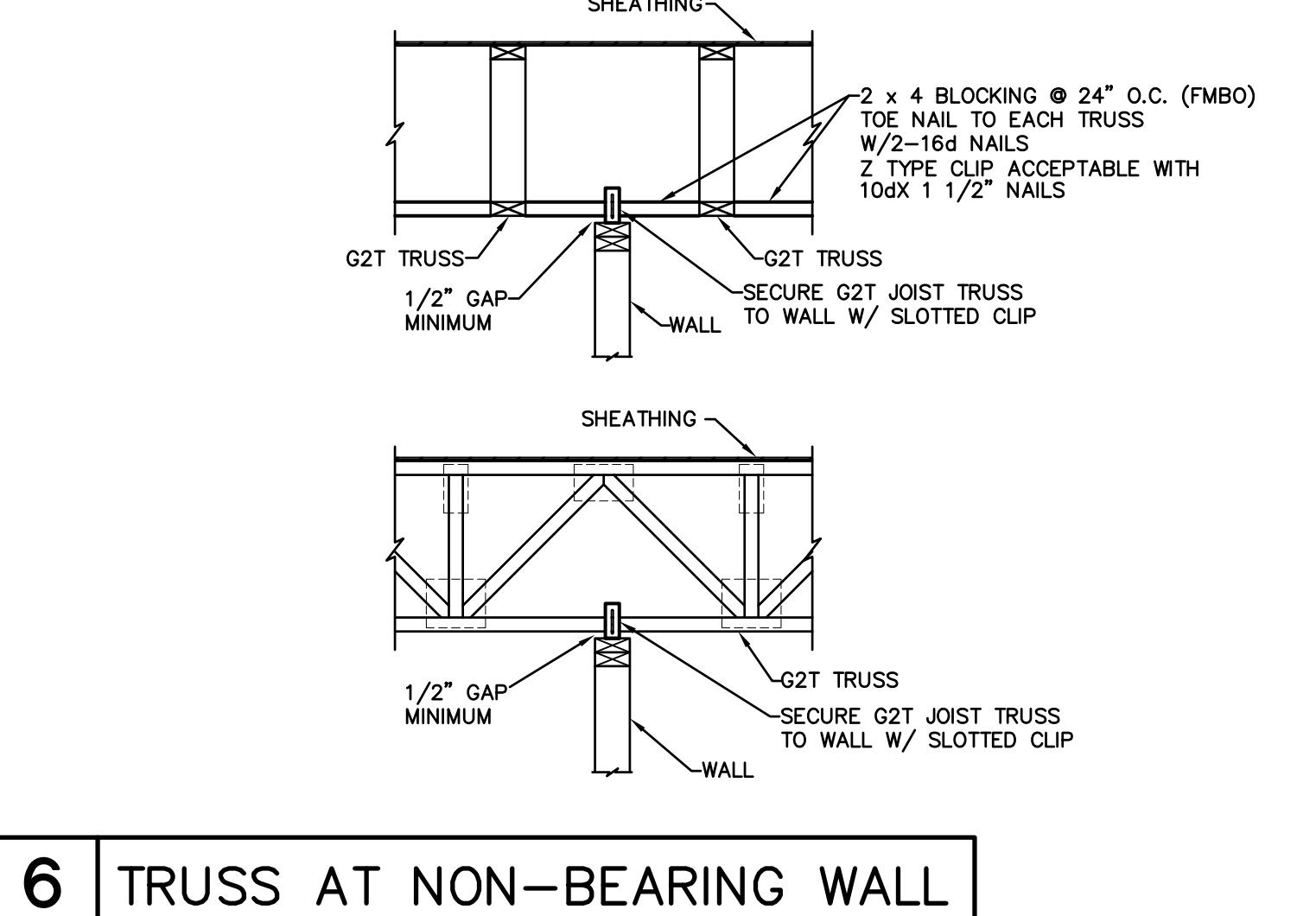
4 FIRE SPRINKLER ATTACHMENT DETAIL



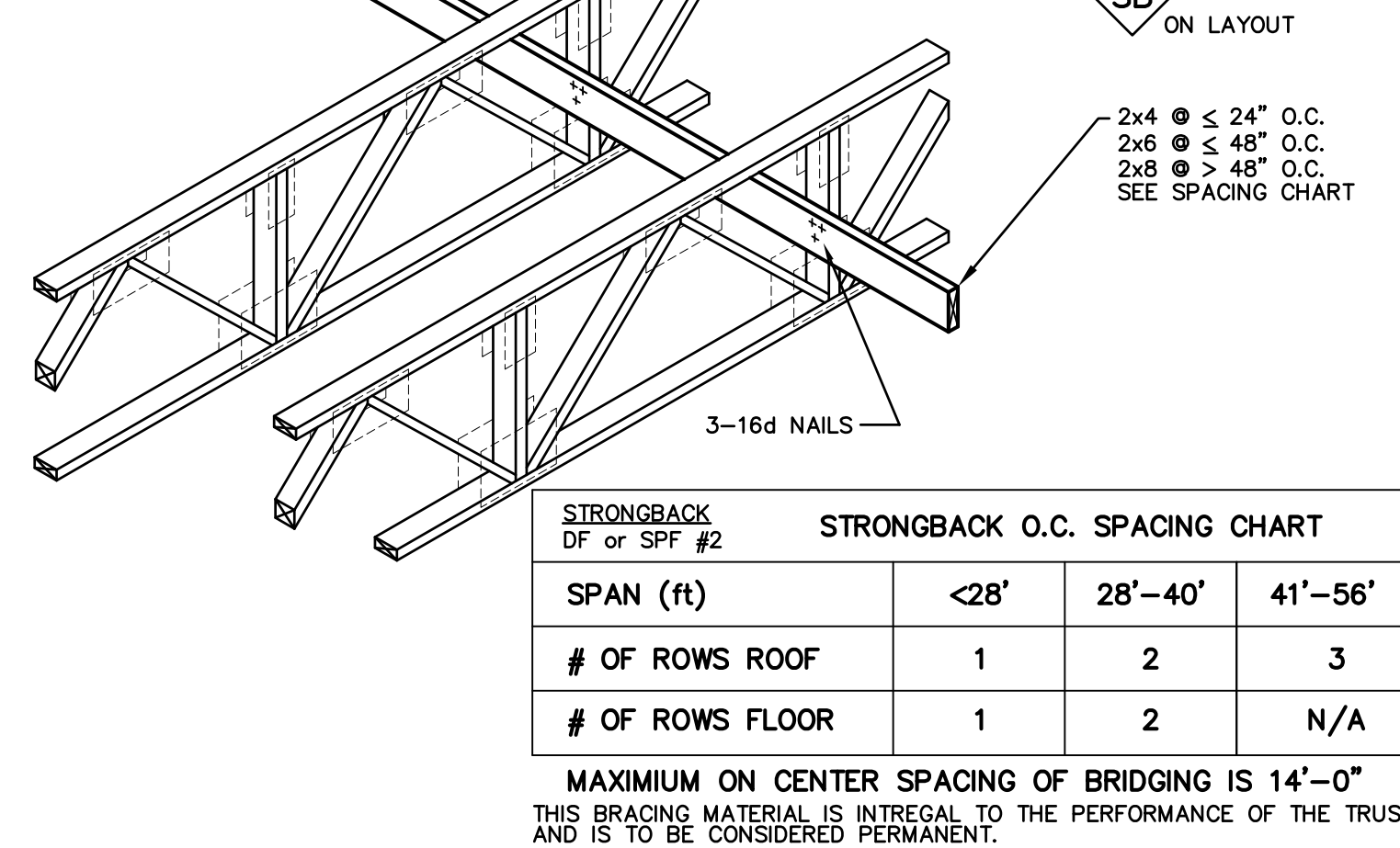
5A FIRE SPRINKLER SWAY BRACE DETAIL



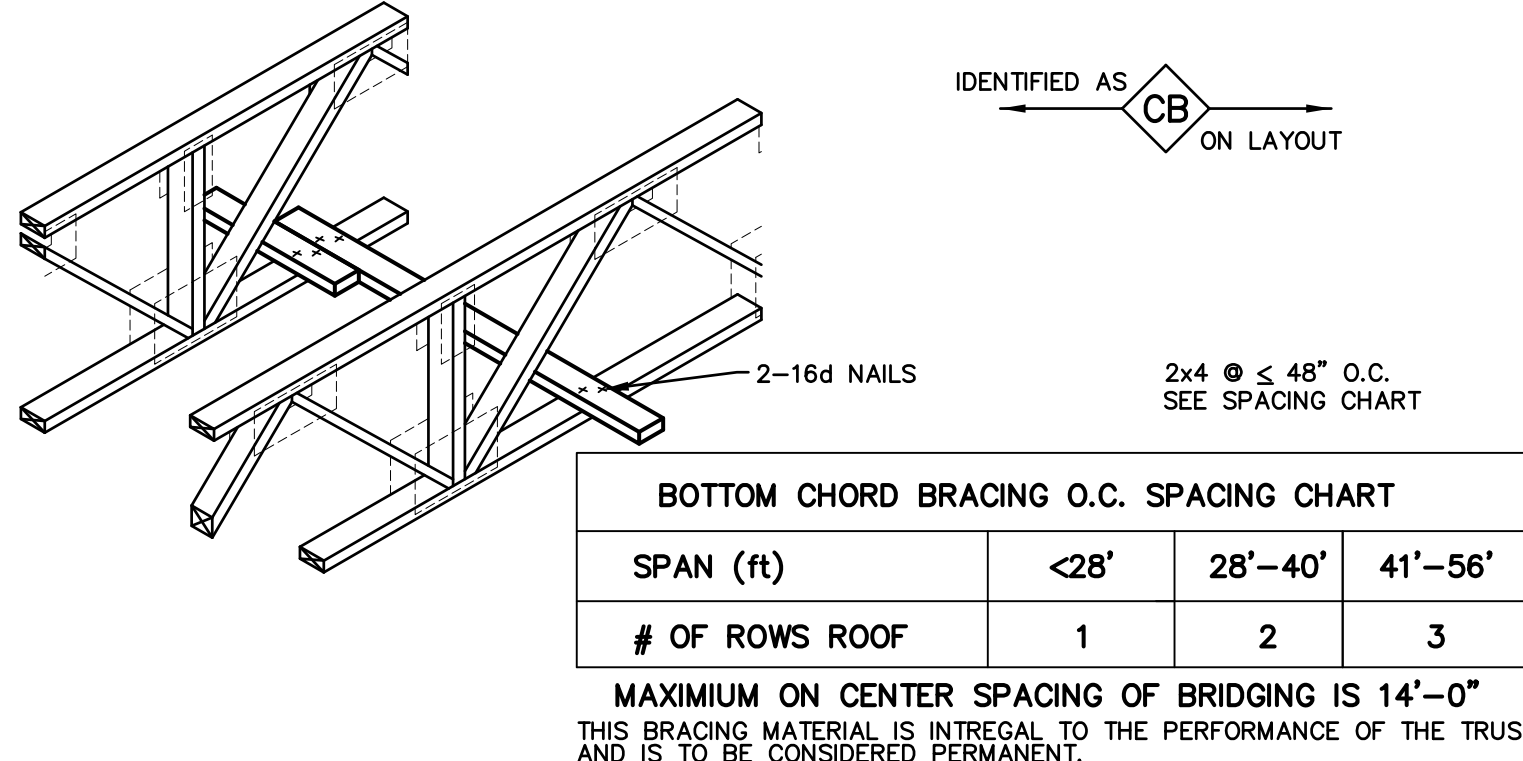
5B FIRE SPRINKLER SWAY BRACE DETAIL



6 TRUSS AT NON-BEARING WALL



7 STRONGBACK DETAIL



8 BOTTOM CHORD BRACING DETAIL

G2T OPEN WEB TRUSS

JOB SITE HANDLING OF G2T OPEN WEB TRUSSES

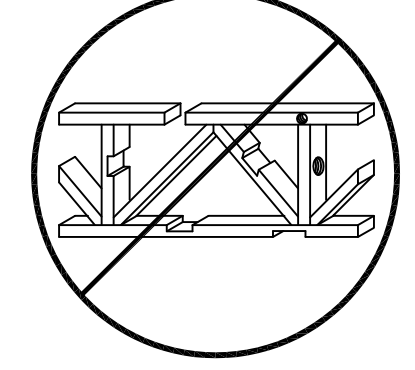
IT IS THE BUILDING CONTRACTOR'S RESPONSIBILITY TO UNLOAD THE G2T TRUSSES FROM THE TRUCK AND FOR ALL HANDLING THEREAFTER. THE G2T OPEN WEB TRUSS GUARANTEE ONLY APPLIES AS LONG AS THE PRODUCT IS NOT DAMAGED OR ALTERED IN ANY WAY. IS INSTALLED IN A WORKMANLIKE MANNER AND ACCORDING TO THE INSTALLATION INFORMATION NOTED HEREIN. G2T TRUSSES WILL BE DELIVERED TO THE JOBSITE IN BUNDLES Banded TOGETHER FOR HANDLING EASE. TO AVOID DAMAGE, TRUSSES SHOULD BE LEFT IN THESE BUNDLES UNTIL READY FOR INSTALLATION IN THE STRUCTURE. A CARELESS CRANE OR FORKLIFT OPERATOR CAN DAMAGE G2T TRUSSES. NEVER HANDLE G2T TRUSSES FLAT - KEEP IN AN UPRIGHT POSITION.

STORAGE OF G2T OPEN WEB TRUSSES

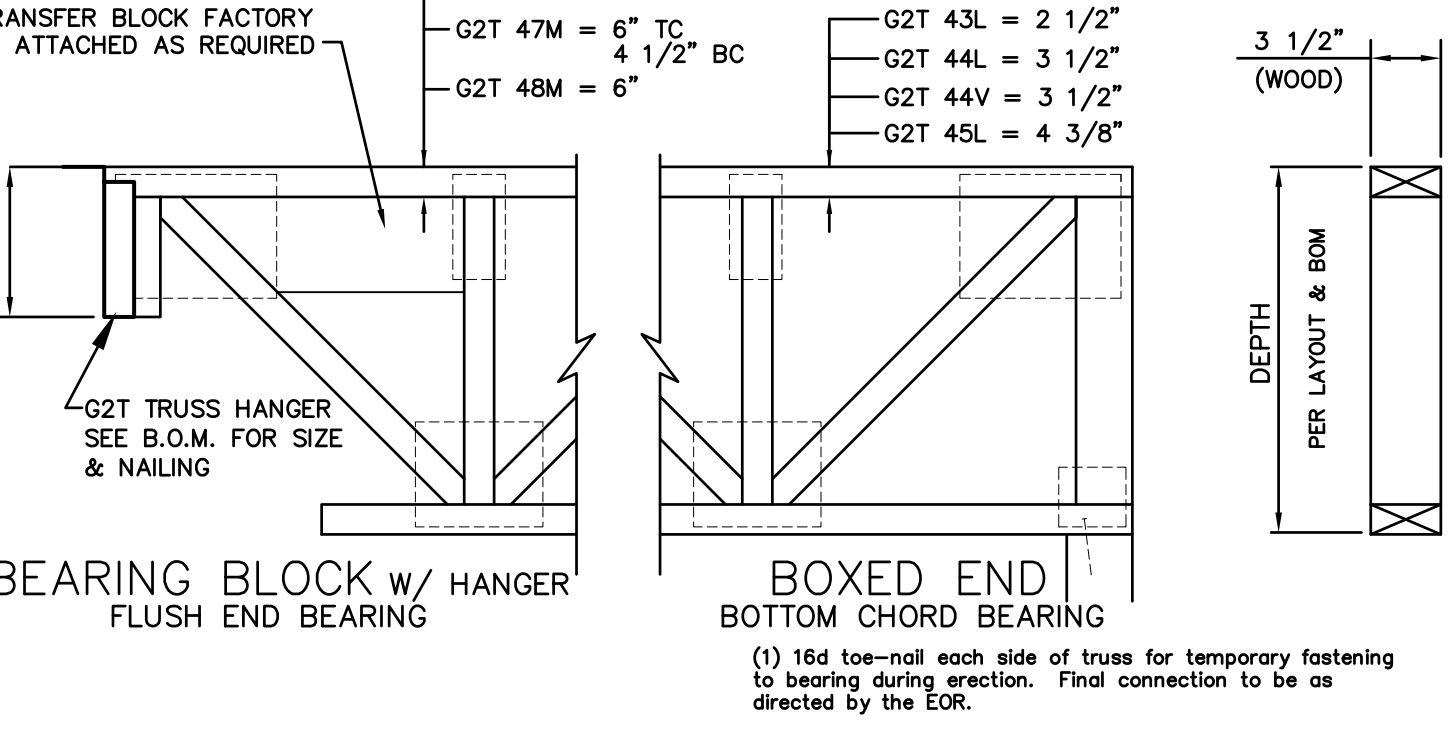
DURING STORAGE AT THE JOBSITE, KEEP G2T TRUSSES IN AN UPRIGHT POSITION. THE BUNDLES SHOULD BE SUPPORTED ON LEVEL STICKERS TO KEEP THE G2T TRUSSES OFF OF THE MUD AND DIRT. STACKING OF BUNDLES IS PERMITTED IF AN ADEQUATE NUMBER OF STICKERS ARE PROVIDED TO PREVENT DAMAGE AND NORMAL SAFETY PRECAUTIONS ARE FOLLOWED. ALL GLUE USED IN G2T TRUSSES IS WATER PROOF. HOWEVER, LONG EXPOSURE TO WATER AND SUN WILL CAUSE SOME DETERIORATION AND CHECKING OF WOOD. G2T TRUSSES SHOULD RECEIVE THE SAME PROTECTION FROM WEATHER AS OTHER WOOD PRODUCTS.

TYPICAL G2T PROJECT NOTES:

- FOR NOTES, DETAILS, AND DIMENSIONS NOT ON THESE PRODUCT PLACEMENT OR DRAWINGS, REFER TO PROJECT PLANS.
- SEE BILLS OF MATERIAL FOR ITEMS FURNISHED.
- ALL CLOUDED NOTES, DIMENSIONS, ETC. REQUIRE VERIFICATION AND MUST BE MARKED "OK" TO THE CORRECT INFORMATION PROVIDED BY CUSTOMER, PRIOR TO RETURN TO BEING RETURNED FOR FABRICATION.
- PLEASE BE AWARE THAT ANY CLOUDED ITEMS NOT ACKNOWLEDGED WILL REQUIRE CONTACT WITH RESPONSIBLE PARTIES AND MAY CAUSE DELAY IN THE PROCESSING OF YOUR ORDER.
- PLEASE VERIFY THAT ALL INFORMATION PROVIDED HEREWITH REFLECTS THE LATEST AVAILABLE PROJECT INFORMATION AND THAT ALL G2T TRUSS LENGTHS CORRESPOND WITH ACTUAL FIELD DIMENSIONS PRIOR TO BEING RETURNED FOR FABRICATION.
- ALL BRACING IS NOT INTEGRAL TO THE G2T OPEN WEB TRUSS SYSTEM AND IS NOT TEMPORARY OR ERECTION BRACING. THE PCT OPEN WEB TRUSS WILL NOT SAFELY SUPPORT LOADS UNTIL FULLY BRACED, FULLY ATTACHED TO BEARING WALLS OR BEAMS, AND SHEATHING, IS PROPERLY INSTALLED (SEE LAYOUTS AND DETAILS).
- POINT LOADS THAT EXCEED 100 LBS. AS INDICATED ON THE PLACEMENT PLAN HEREIN.
- INSTALLATION OF G2T OPEN WEB TRUSSES MUST FOLLOW ANY ADDITIONAL REQUIREMENTS INDICATED ON THE PLACEMENT PLAN AND IN THE CALCULATIONS.
- ALL G2T OPEN WEB TRUSSES ARE DESIGNED FOR UNIFORM LOADS AND CONCENTRATED LOADS NOTED ON THESE DRAWINGS AND CALCULATIONS. TEMPORARY CONSTRUCTION LOADS WHICH CAUSE STRESSES BEYOND DESIGN CRITERIA ARE NOT PERMITTED.
- ALL 2X, 4X, 6X ETC. FRAMING TO BE SUPPLIED BY OTHERS, UNO. (FMBO).
- METAL STRAPS AND/OR TIES USED FOR SEISMIC PURPOSES THAT ARE NAILED TO THE TOP OF THE TOP CHORD ARE TO USE 10d NAILING AT NO LESS THAN 3" ON IN A ROW UNO. ACCEPTABLE STRAPS FOR UNO TOP CHORDS ARE LTTI, LSTI, MSTI AND PAI OR OTHER COMPARABLE ITEMS UNO.
- G2T OPEN WEB TRUSSES ARE NOT DESIGNED TO SUPPORT ANY FIRE SPRINKLER AND/OR MECHANICAL LOADS OTHER THAN WHAT IS SHOWN WITHIN THESE DRAWINGS, AND OR WHAT HAS BEEN PROVIDED IN THE DESIGN DEAD LOAD(S).
- THE PLACEMENT OF THE MECHANICAL UNITS AND SPRINKLER MAINS ARE TO BE AS NOTED ON THE PLACEMENT PLAN. THE SUPPORTING TRUSSES HAVE BEEN SPECIFICALLY DESIGNED TO ACCOMMODATE THESE ITEMS. ALL COMPONENTS TRANSFERRING LOADS TO THE TRUSSES SHALL BE DESIGNED AND INSTALLED IN ACCORDANCE WITH THE DETAILS CONTAINED WITHIN THESE DRAWINGS. IF THE ACTUAL LOCATIONS DO NOT COINCIDE WITH THESE DRAWINGS CONTACT THE MANUFACTURER.
- G2T TRUSS DESIGNS ARE IN ACCORDANCE WITH THE CURRENT ADOPTED EDITION OF THE IBC, CBC, AND NATIONAL DESIGN SPECIFICATION, AND CONFORM TO CURRENT ICC-ES REPORT.



- M DENOTES MACHINE STRESS RATED (MSR) LUMBER CHORDS STRUCTURALLY FINISH JOINTED INTO A CONTINUOUS MEMBER. MULTIPLE PLIES ARE FACE BONDED CREATING A CONTINUOUS AND MONOLITHIC MEMBER.
- L DENOTES LAMINATED STRAND LUMBER (LSL) CHORDS ALL MEMBERS CONTINUOUS AND MONOLITHIC (NO SPLICES)
- V DENOTES LAMINATED VENEER LUMBER (LVL) CHORDS ALL MEMBERS CONTINUOUS AND MONOLITHIC (NO SPLICES)
- G2T 42M = 1 1/2"
 - G2T 43M = 3" TC
 - G2T 44M = 3"
 - G2T 45M = 4 1/2" TC
 - G2T 46M = 4 1/2" BC
 - G2T 47M = 6" TC
 - G2T 48M = 6"
 - G2T 43L = 2 1/2"
 - G2T 44L = 3 1/2"
 - G2T 45L = 3 1/2"
 - G2T 45L = 4 3/8"



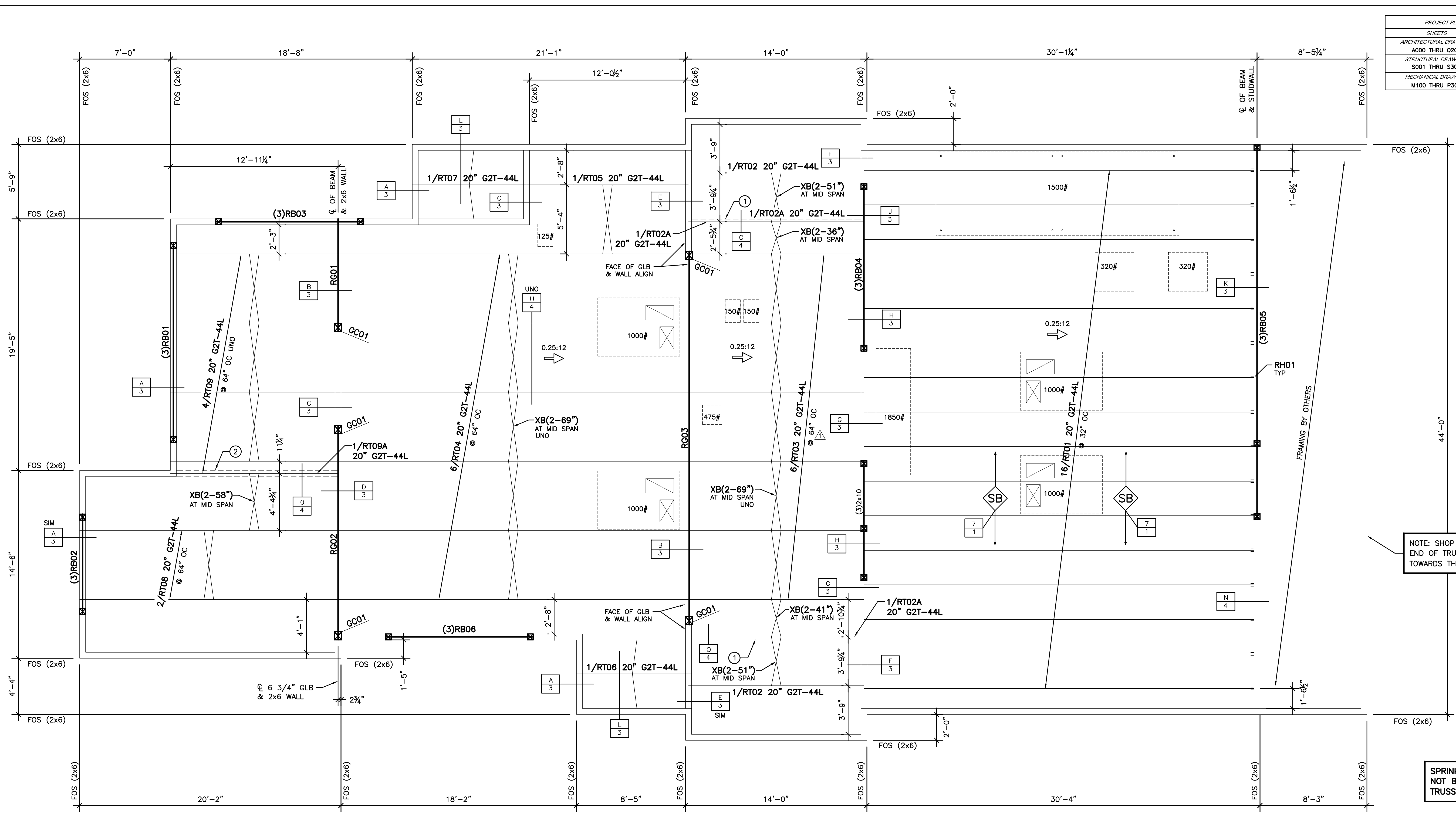
8 G2T TRUSS NOTES AND PROFILES

- LEGEND / ABBREVIATIONS**
- SEE PROJECT PLANS FOR OTHER ABBREVIATIONS AND SYMBOLS USED.
- DETAIL (ON SHOP DRAWINGS)
 - PROJECT PLAN DETAIL (PER PLANS)
 - START G2T TRUSS LAYOUT @ o/c SPACING
 - STRONGBACK LOCATION
 - ➔ DIRECTION OF ROOF SLOPE
- FMBO = FRAMING MATERIAL BY OTHERS
NIC = NOT IN CONTRACT
UNO = UNLESS NOTED OTHERWISE
LBS = POUNDS
PSF = POUNDS PER SQUARE FOOT
PLF = POUNDS PER LINEAL FOOT
DBL = DOUBLE MEMBER (TPL = TRIPLE MEMBER)

REVISIONS
 ZAXBY'S (G) - TEMPLE, TX
 2002 31ST STREET
 TEMPLE, TX 76504
 ENGINEER: HILL FOLEY ROSS & ASSOCIATES 770-452-8688
 ARCHITECT: HILL FOLEY ROSS & ASSOCIATES 770-452-8688
 CUSTOMER: SANDOR CONSTRUCTION LLC 254-410-9111
 4400 N. SCOTTSDALE RD. #6396, SCOTTSDALE, AZ 85251
 PN-13207
 SHEET 1 OF 4

PROJECT PLANS USED:		DATE	
SHEETS			
ARCHITECTURAL DRAWINGS			
A000 THRU G200	03/09/17		
STRUCTURAL DRAWINGS			
S201 THRU S305	03/09/17		
MECHANICAL DRAWINGS			
M100 THRU P300	03/09/17		

DESIGN CRITERIA	
BUILDING CODE:	2009 IBC
ROOF:	20 PSF
LIVE LOAD (@125%):	5 PSF
DEAD LOAD (TC):	15 psf, RC: 5 psf
DESIGN WIND PRESSURE:	10 MPH (ASD), EXP. B
NET WIND UPLIFT:	9 PSF
DEFLECTION:	L _x = L/240, L _y = L/180



NOTE: SHOP PAINTED END OF TRUSSES TOWARDS THIS WALL

SPRINKLER LINES OF 3"Ø HAVE NOT BEEN CONSIDERED IN THE TRUSS DESIGNS.

ROOF FRAMING PLAN

(REF: S201)
SCALE: 1/4" = 1'-0"

NOTE: CRITICAL CLEAR SPAN DIMENSION IS FROM INSIDE FACE OF SUPPORT TO INSIDE FACE OF SUPPORT.

24F-V3 SP ARCHITECTURAL APPEARANCE

QTY	MARK	WIDTH	DEPTH	LENGTH	CAMBER
1	RG01	6 3/4	15 1/8	10'-0"	STD
1	RG02	6 3/4	15 1/8	17'-0"	STD
1	RG03	6 3/4	28 1/2	30'-0"	STD

LP CORP 2.0 LVL ESR-2403

QTY	MARK	WIDTH	DEPTH	LENGTH
3	RB01	1 3/4	14	16'-0"
3	RB02	1 3/4	9 1/2	8'-0"
3	RB03	1 3/4	11 7/8	12'-0"
3	RB04	1 3/4	14	14'-0"
3	RB05	1 3/4	24	30'-0"
3	RB06	1 3/4	9 1/2	12'-0"

G2T TRUSS LIST

MARK	QTY	CLR SPAN	MFR LENGTH	DEPTH/SERIES	REMARKS
RT01	16	29'-10 1/2"	30'-1"	20" G2T-44L	
RT02A	2	13'-1"	13'-6 3/8"	20" G2T-44L	
RT02	2	13'-1"	13'-6 3/8"	20" G2T-44L	
RT03	6	12'-11 3/4"	13'-5 3/4"	20" G2T-44L	
RT04	6	26'-6 3/8"	27'-1"	20" G2T-44L	
RT05	1	12'-0 1/2"	12'-5 7/8"	20" G2T-44L	
RT06	1	7'-11 1/2"	8'-10 1/2"	20" G2T-44L	
RT07	1	8'-1 1/2"	8'-9 11/16"	20" G2T-44L	
RT08	2	19'-2 3/8"	19'-11 3/16"	20" G2T-44L	
RT09A	1	12'-2 3/8"	12'-11 3/16"	20" G2T-44L	
RT09	4	12'-2 3/8"	12'-11 3/16"	20" G2T-44L	

SIMPSON CONNECTORS

QTY	MARK	DESCRIPTION	NAILING		REMARKS
			HEADER	JOIST	
16	RH01	HU412	16-16d	6-10d	-

MISC. MATERIAL LIST

ITEM	QTY	REMARKS
2x6 B/C BRACING	100 LF	SEE DETAIL 7/1
TB42	4	SEE DETAIL L/3
1" DIA TUBE BRACE 69" LONG	30	SEE DETAIL U/4
1" DIA TUBE BRACE 58" LONG	2	SEE DETAIL U/4
1" DIA TUBE BRACE 51" LONG	4	SEE DETAIL U/4
1" DIA TUBE BRACE 41" LONG	2	SEE DETAIL U/4
1" DIA TUBE BRACE 36" LONG	2	SEE DETAIL U/4
6x8 x 6'-0" BLOCKING MATERIAL	32	SYP/DF #1 S4S FIELD TRIM TO FIT

COMB 48 SP ARCHITECTURAL APPEARANCE (S4S) LUMBER GRADE: N2D14

QTY	MARK	WIDTH	DEPTH	LENGTH	CAMBER
5	GC01	6 3/4	7 1/2	14'-0"	0

PROJECT NOTES:

- ① LOAD FROM WALL ABOVE: 175 PLF DL, 40 PLF LL, 40 PLF SL, 20 PLF WL, 50 PLF EL
- ② LOAD FROM WALL ABOVE: 255 PLF DL, 150 PLF LL, 150 PLF SL, 75 PLF WL, 150 PLF EL

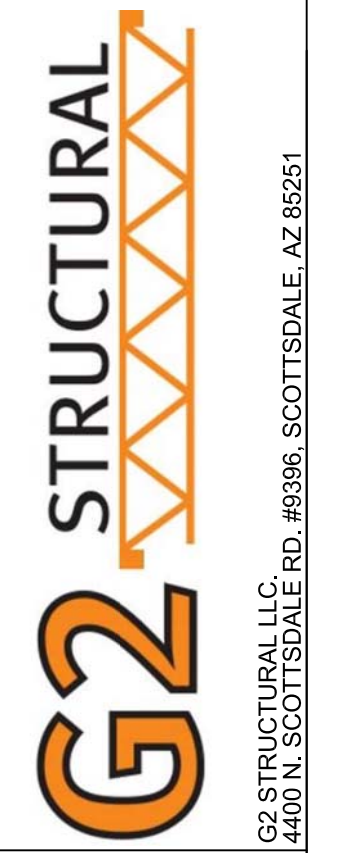
REVISED FOR CONSTRUCTION

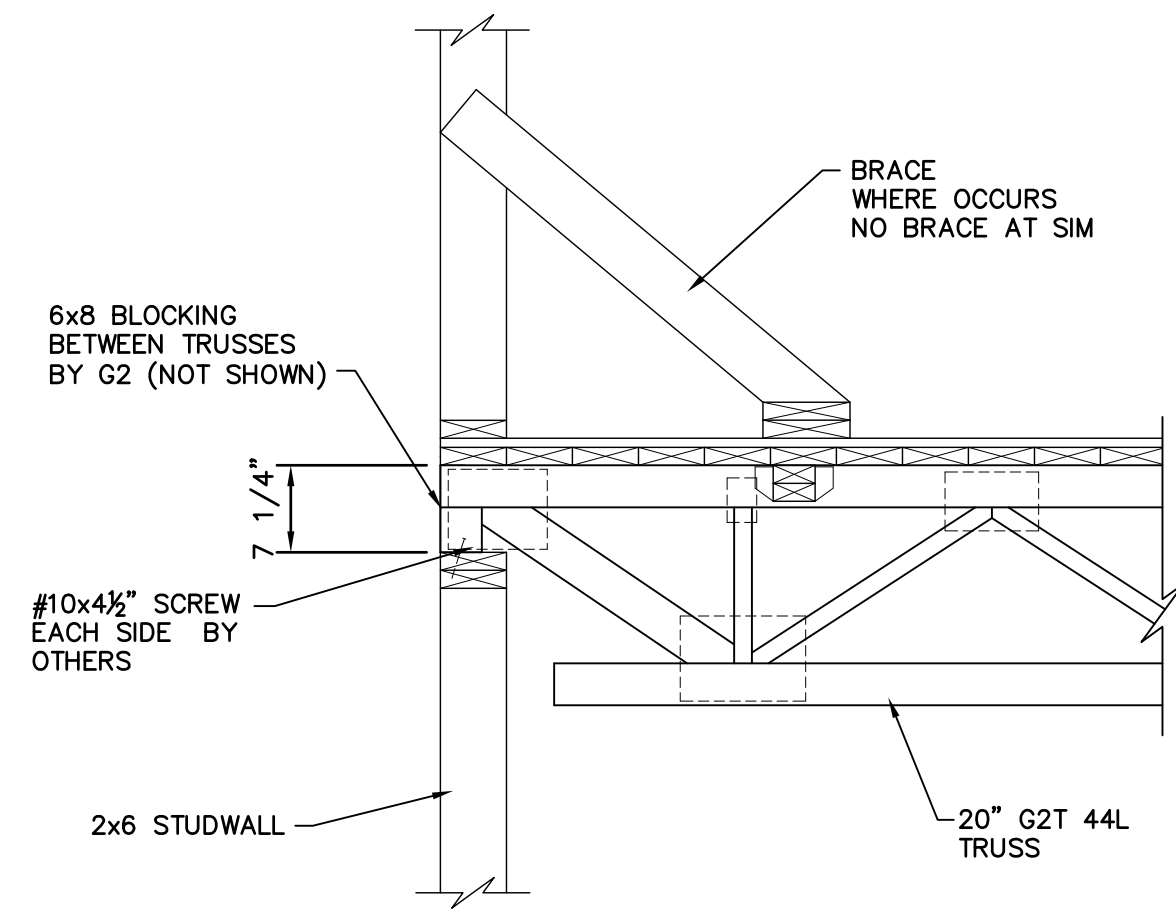
REVISIONS

NO.	DATE	DESCRIPTION
1	12-21-17	Per Approval
2		
3		
4		

ZAXBY'S (G) - TEMPLE, TX
2002 31ST STREET
TEMPLE, TX 76504

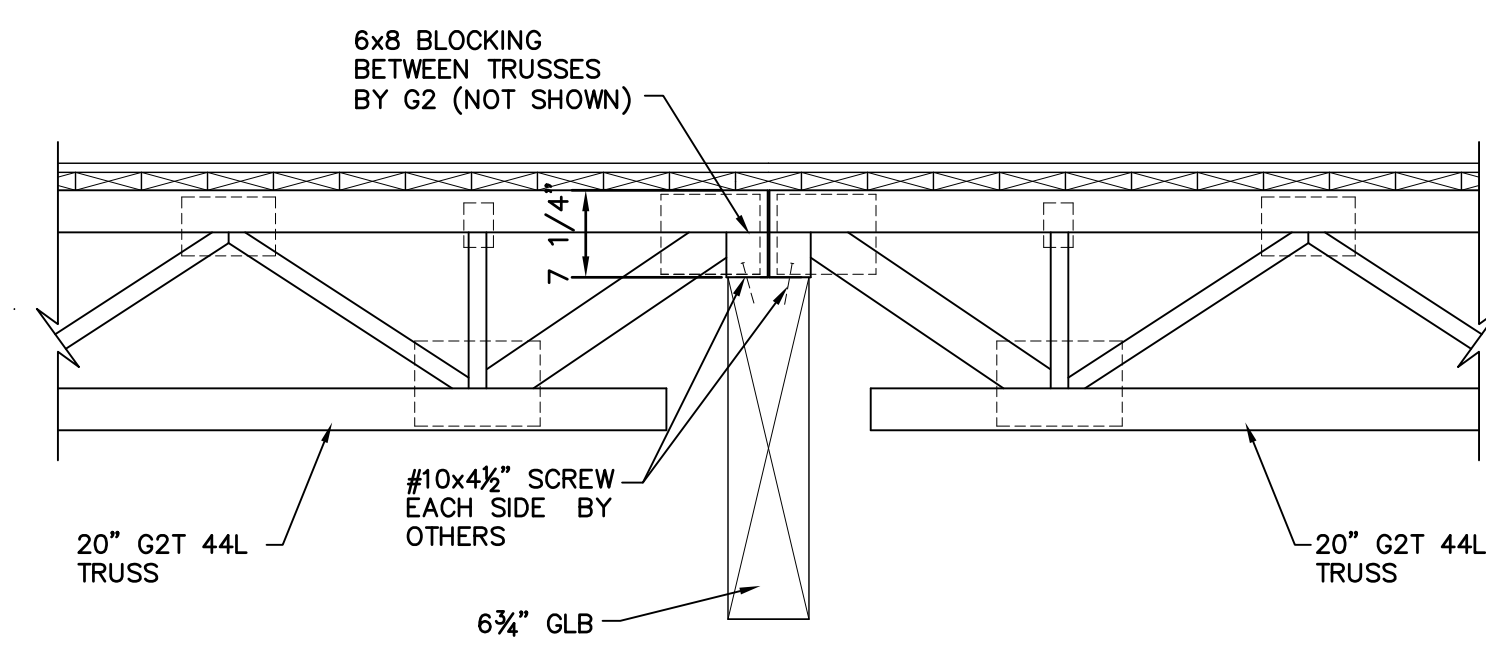
ENGINEER: HILL FOLEY ASSOCIATES
770-522-8858
ARCHITECT: HILL FOLEY ROSS & ASSOCIATES
770-522-8858
CUSTOMER: SANDOR CONSTRUCTION LLC
254-410-9111





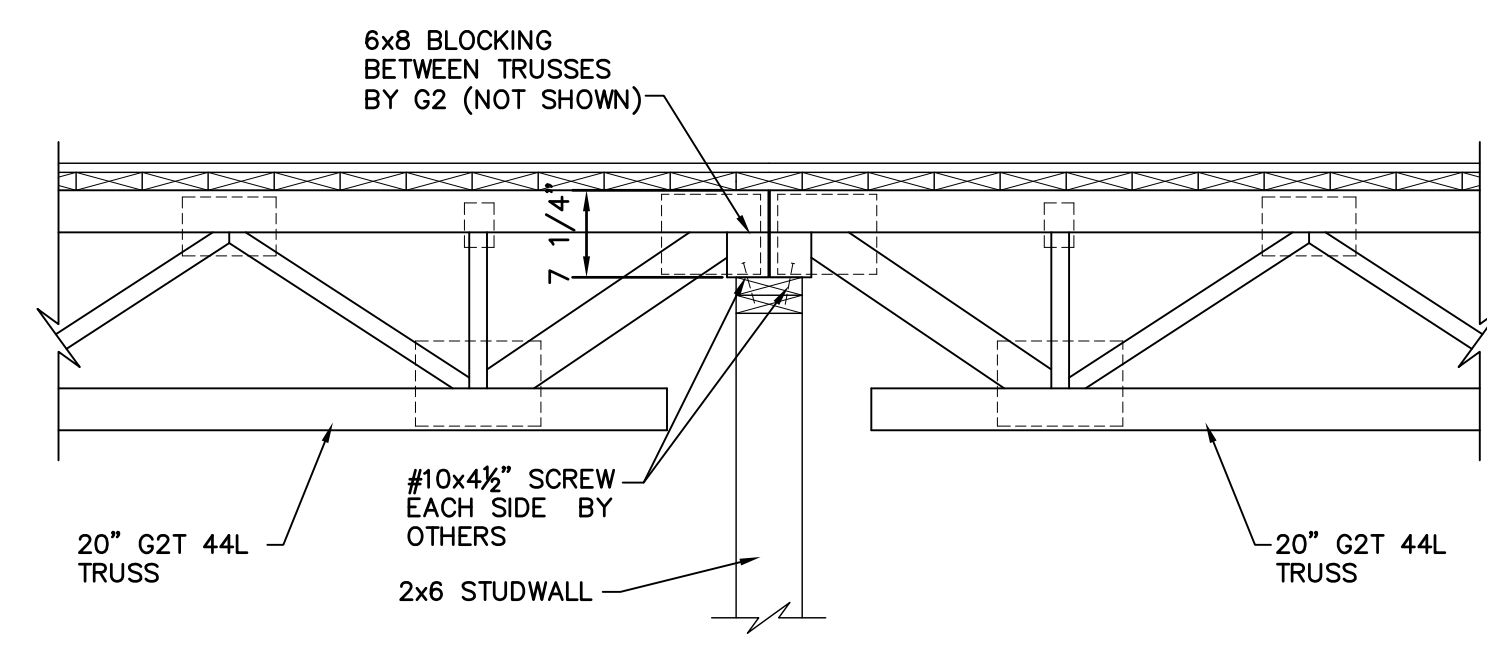
REF: 405/S305, 220/S302

A



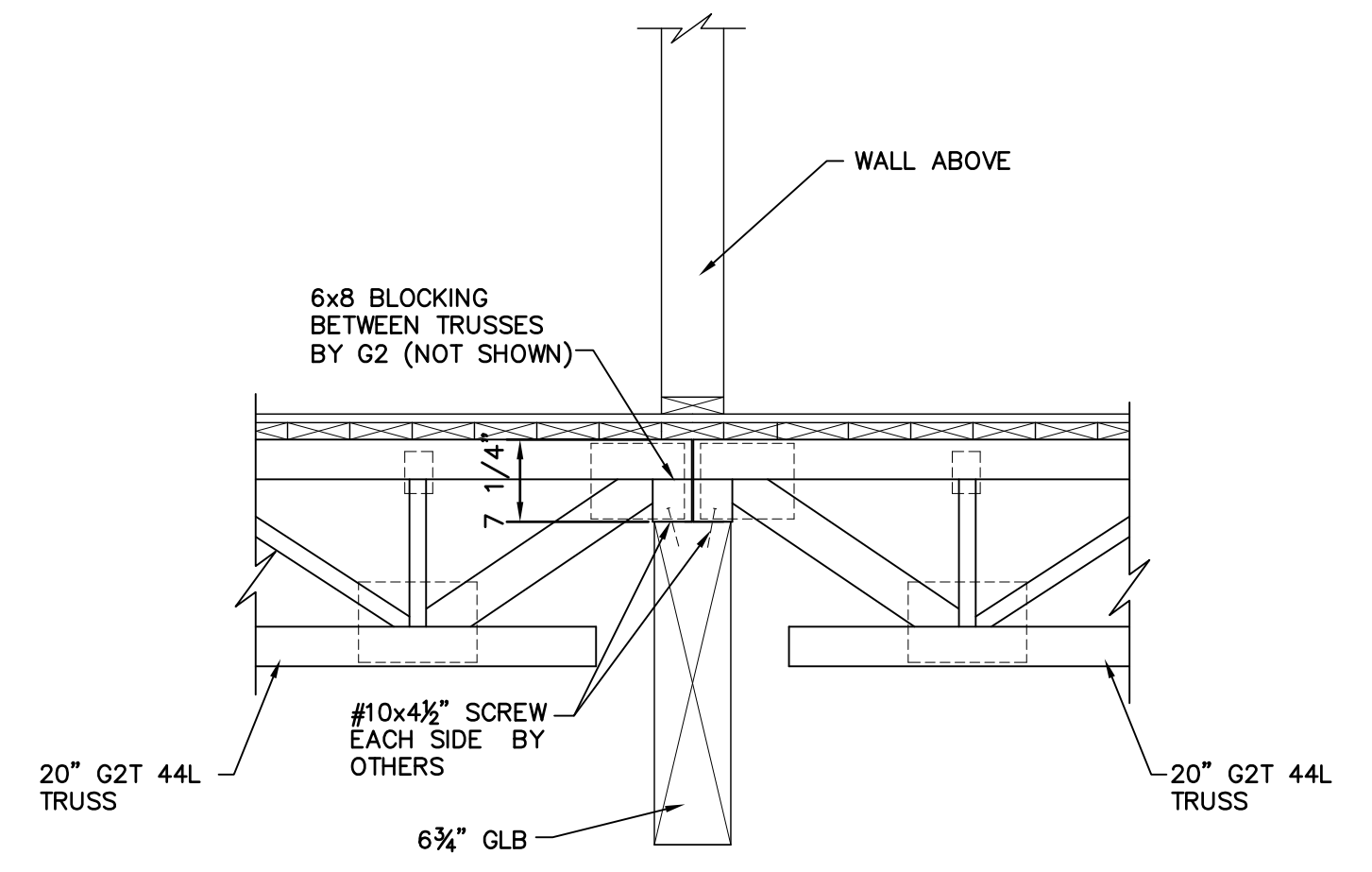
REF: 230/S302,

B



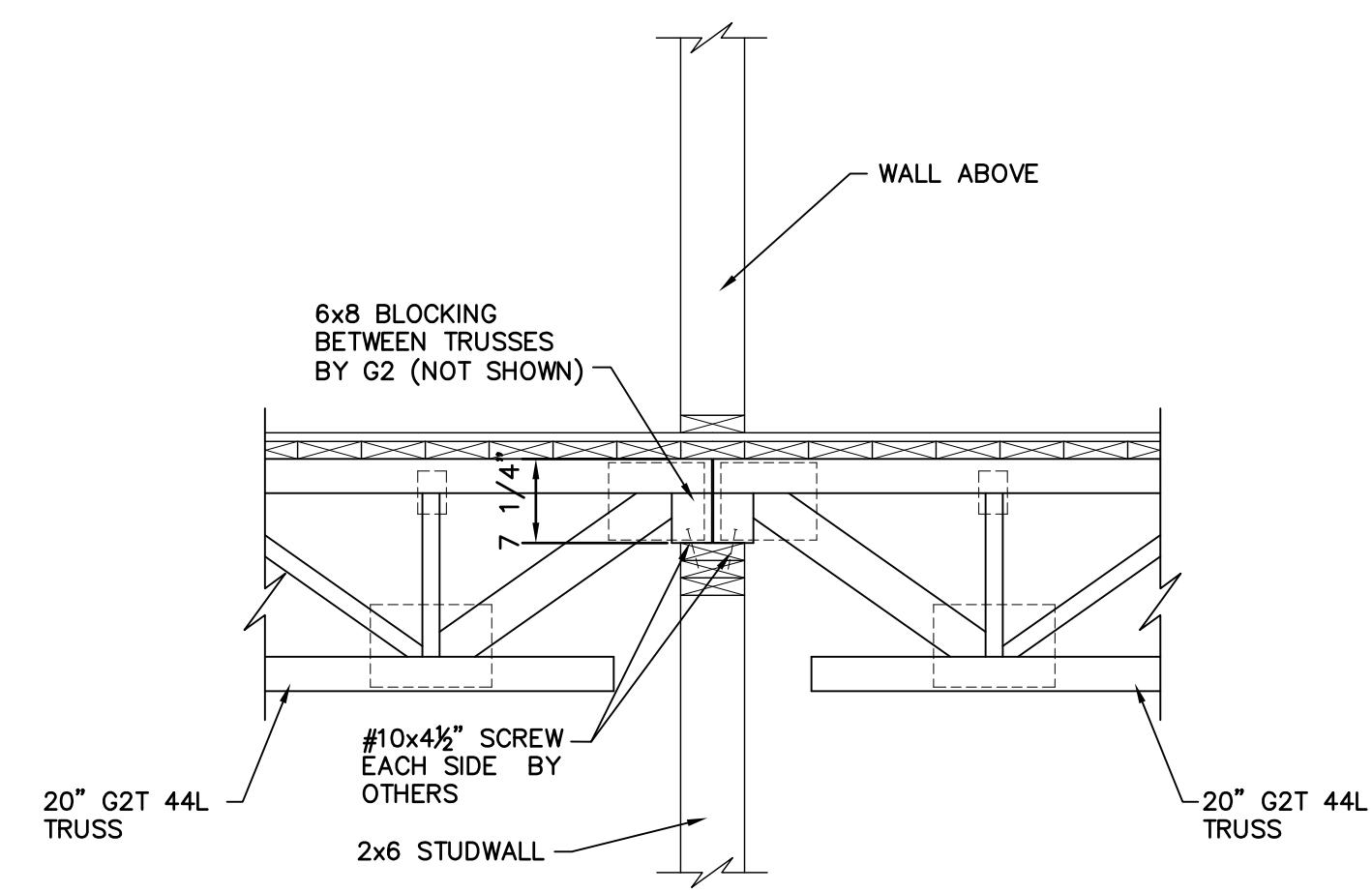
REF: 340/S304, 380/S304

C



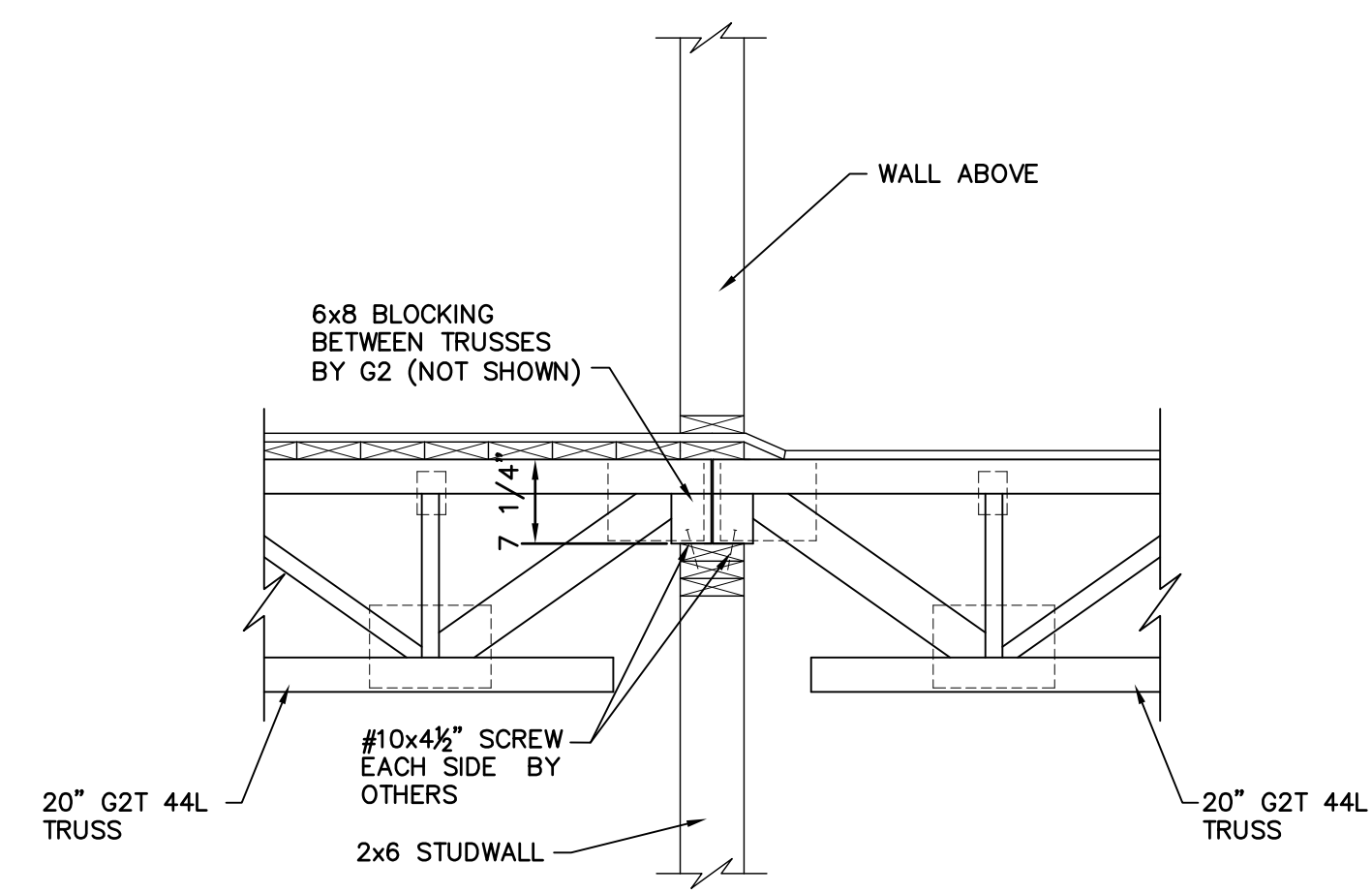
REF: 295/S303,

D



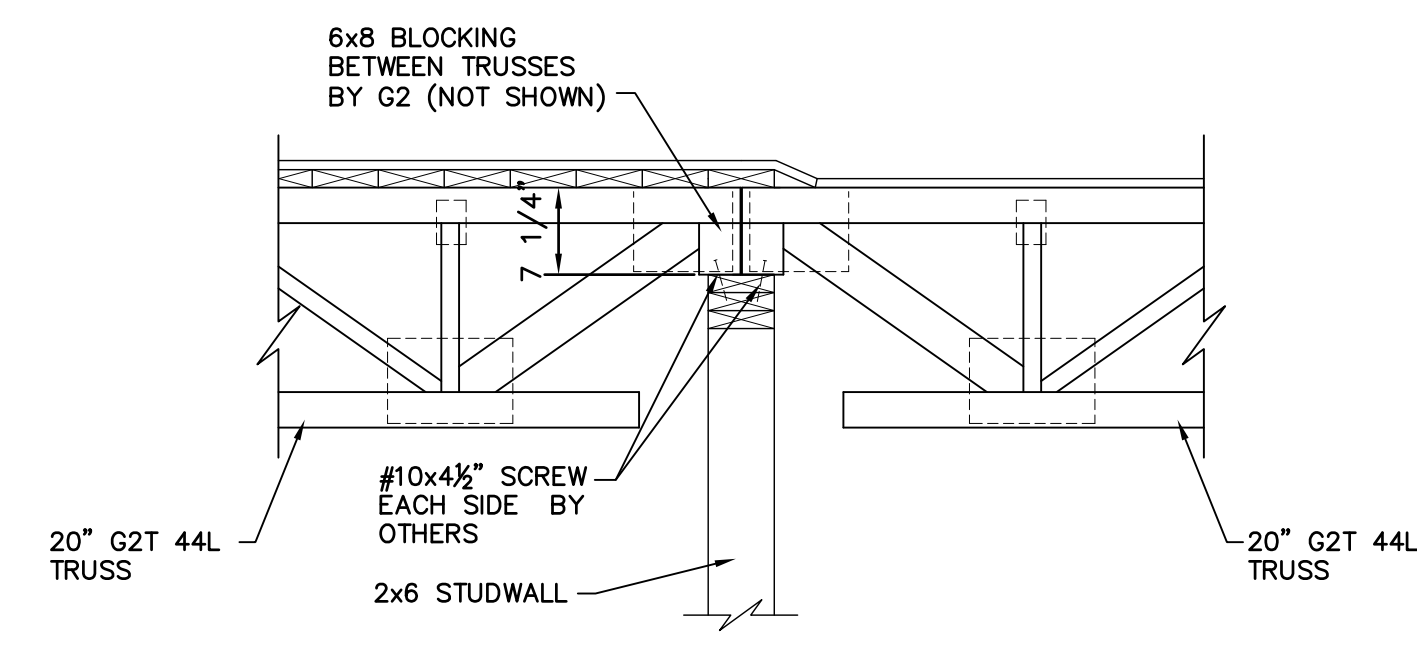
REF: 285/S303,

E



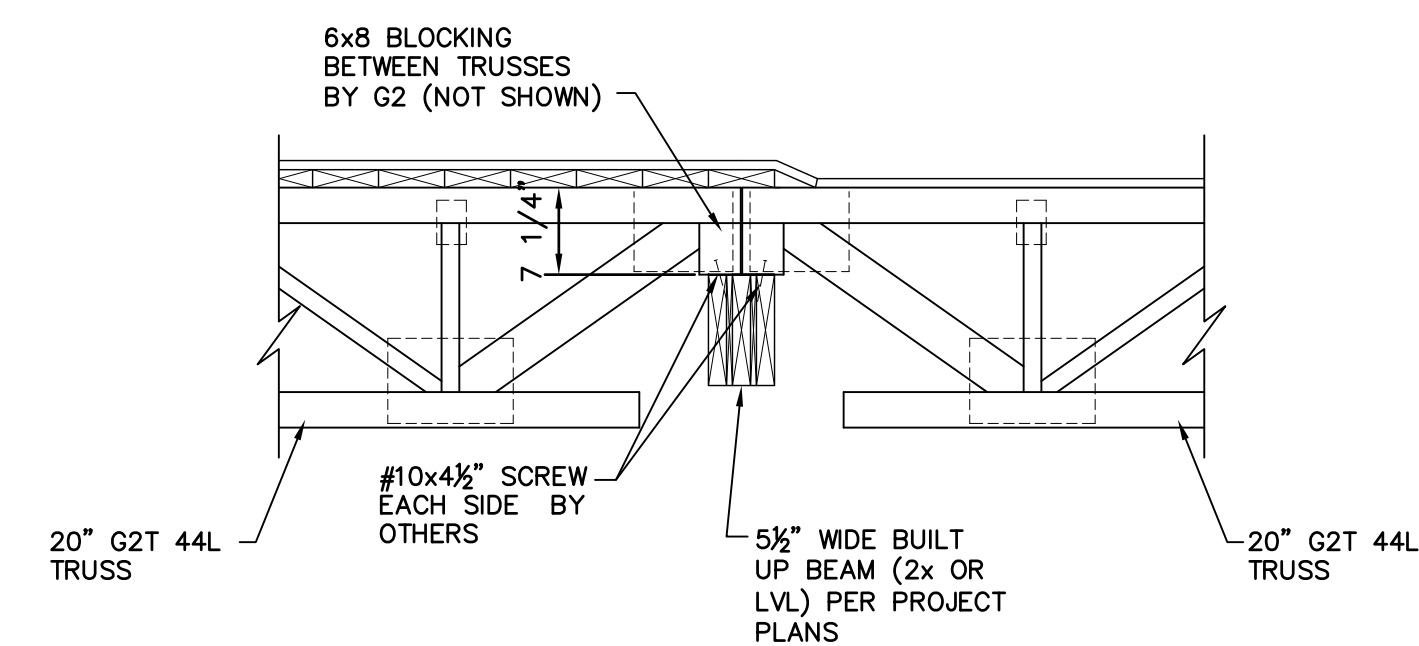
REF: 375/S304, 373/S304

F



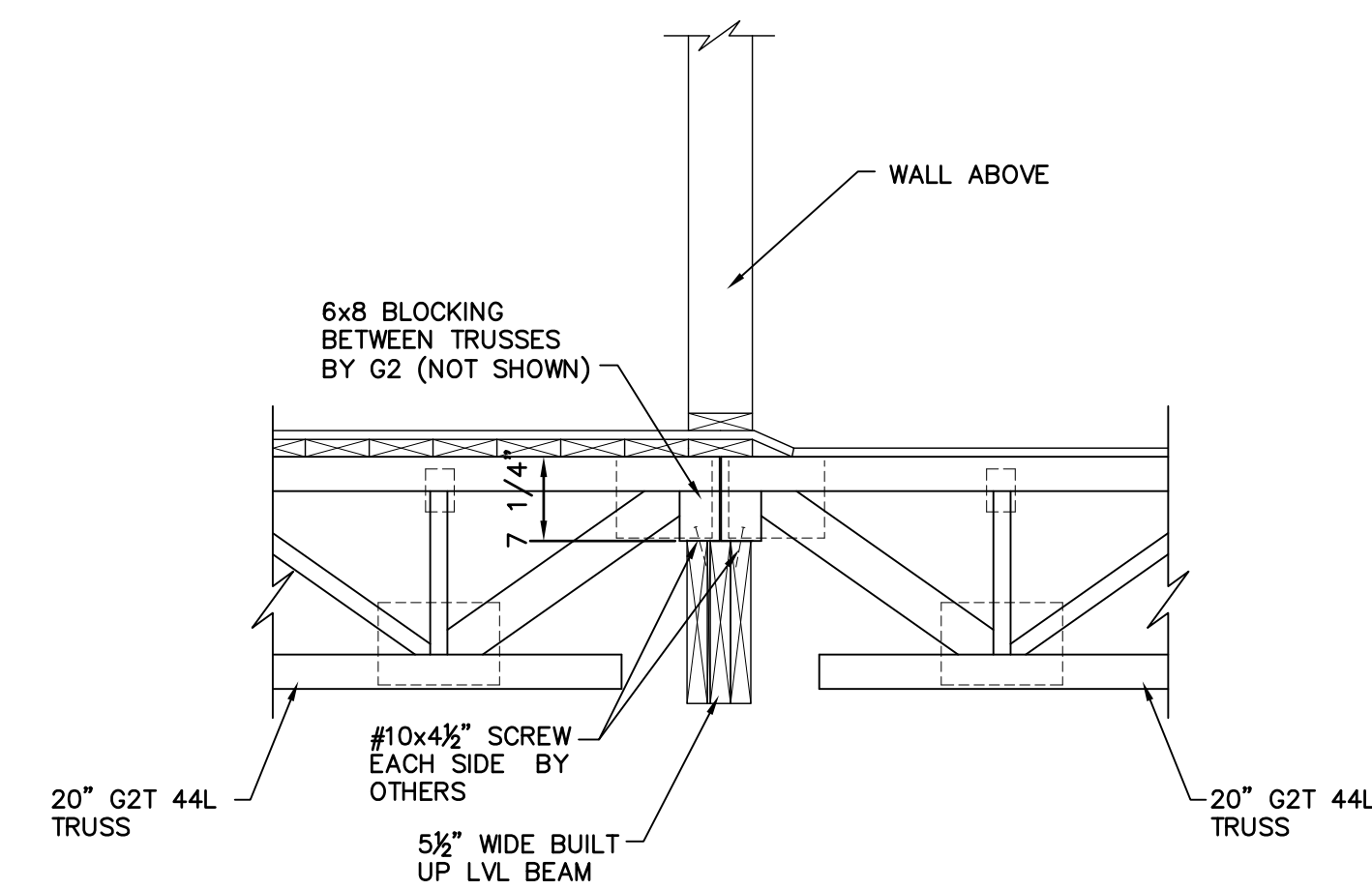
REF: 235/S302,

G



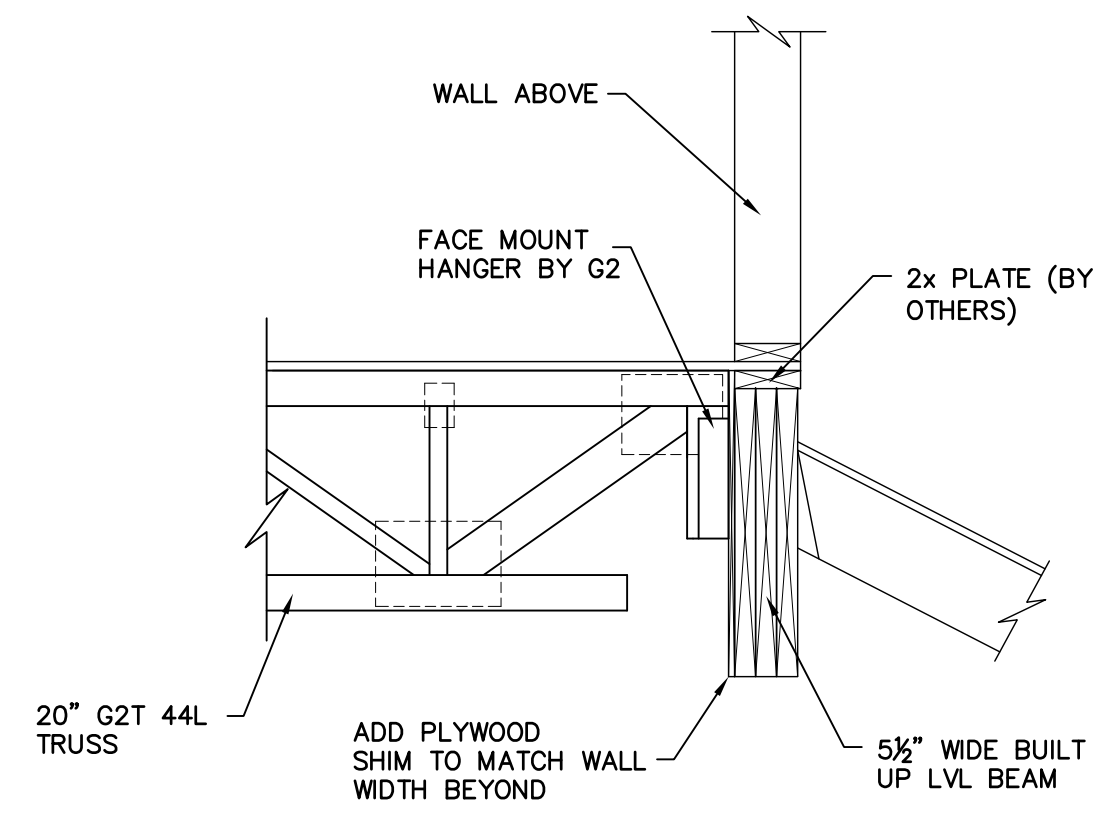
REF: 367/S304,

H



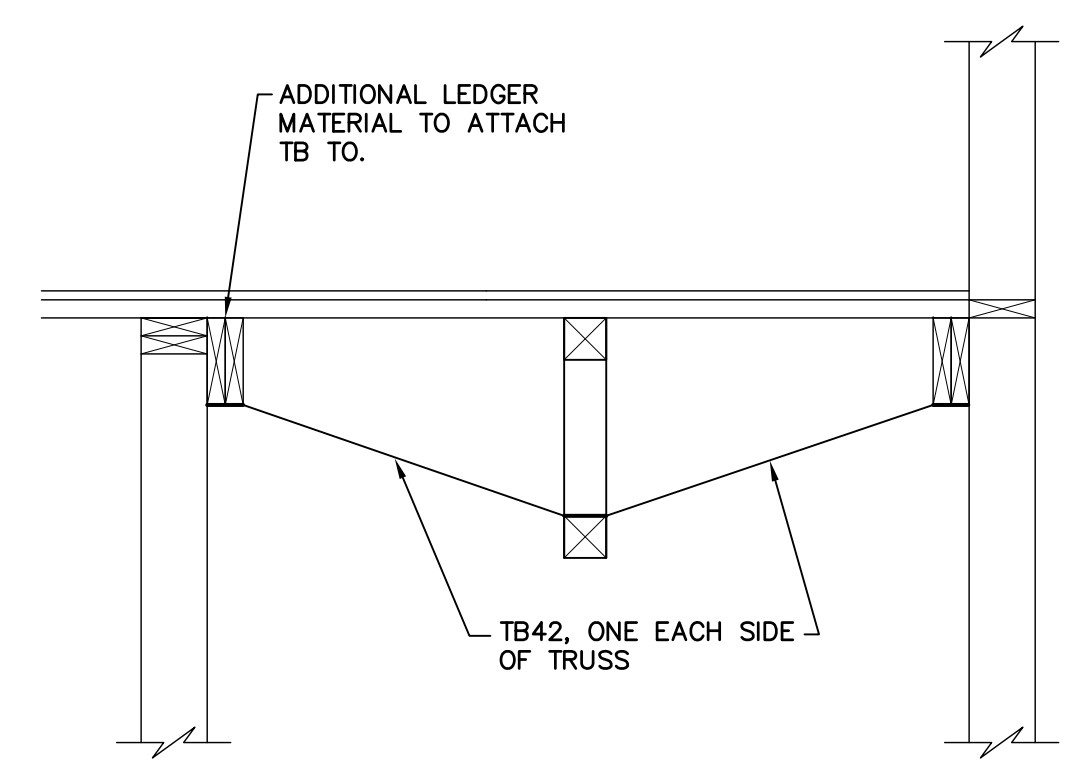
REF: 371/S304,

J



REF: 240/S302,

K



L

NO.	DATE	REVISIONS
1		
2		
3		
4		
5		

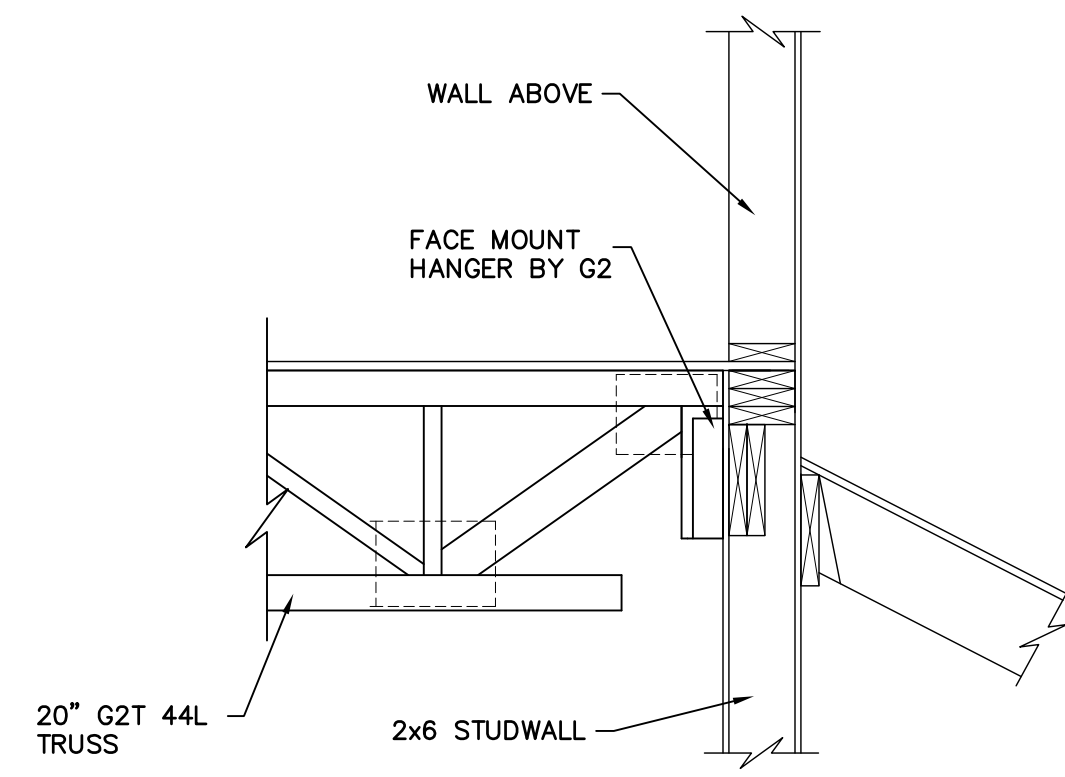
ZAXBY'S (G) - TEMPLE, TX
 2002 31ST STREET
 TEMPLE, TX 76504

ENGINEER: HILL FOLEY BOSS & ASSOCIATES
 770-922-8858
 ARCHITECT: HILL FOLEY BOSS & ASSOCIATES
 770-922-8858
 CUSTOMER: SANDOR CONSTRUCTION LLC
 254-410-8111

G2 STRUCTURAL
 G2 STRUCTURAL LLC
 4400 N. SCOTTSDALE RD. #9396, SCOTTSDALE, AZ 85251

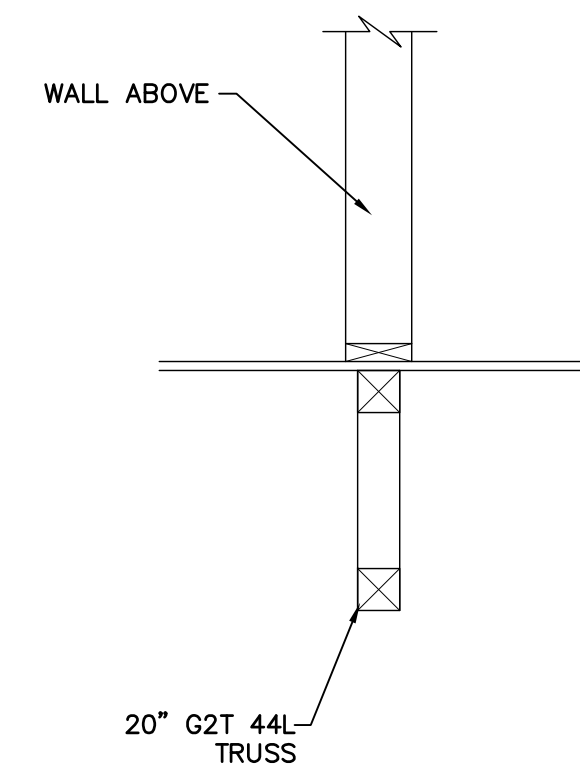
PN-13207
 SHEET
 3 OF 4

REVISED FOR CONSTRUCTION



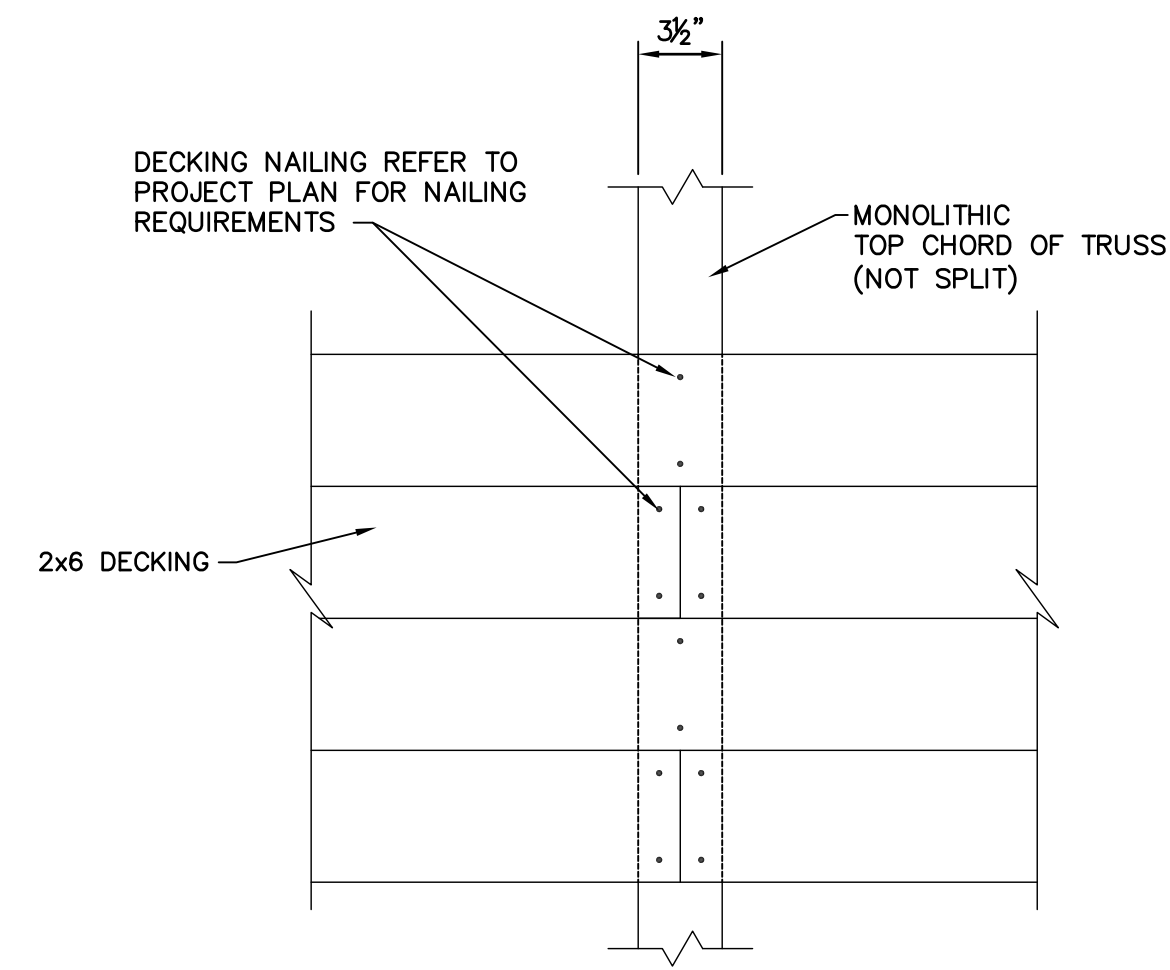
REF: 245/S302,

N
-



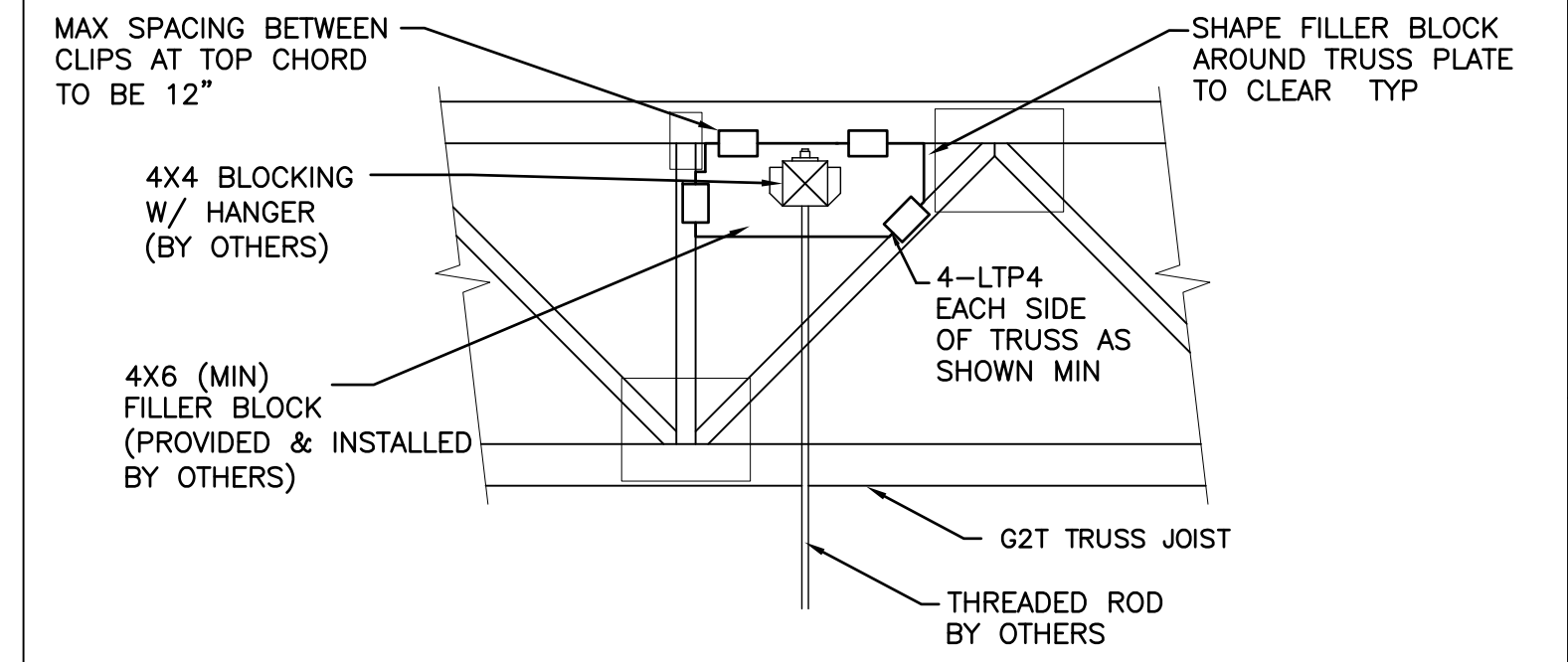
REF: 290/S303

O
-



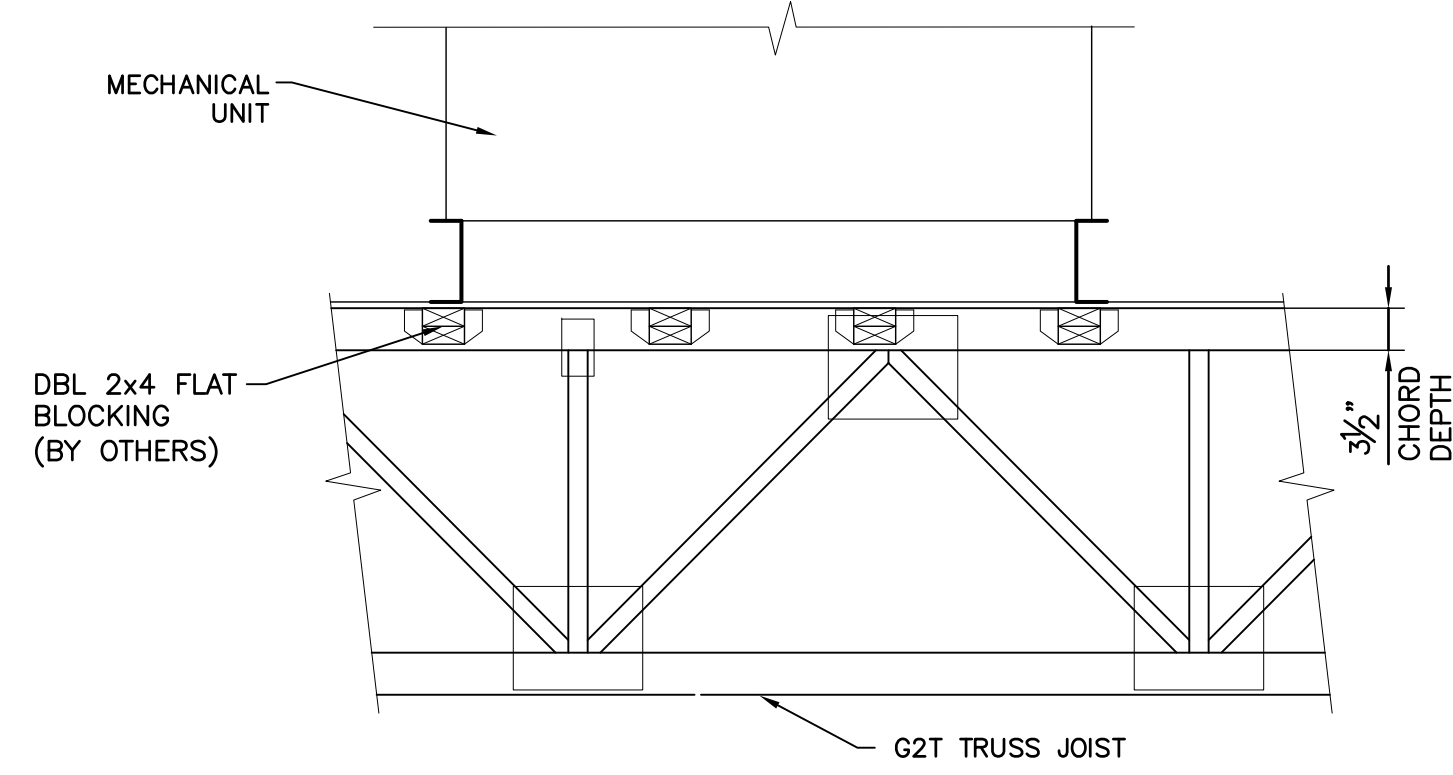
REF: 260/S303

R
-



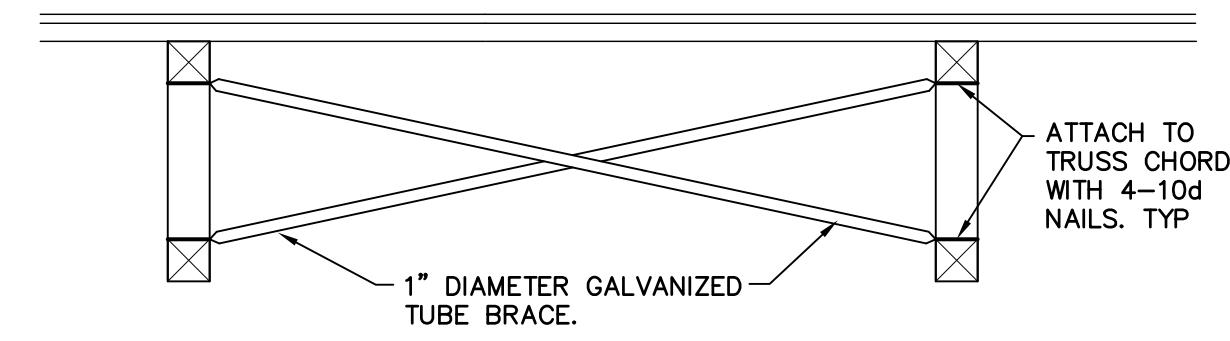
REF 410/S305

S
-



REF: 300, 305, 310/S304

T
-

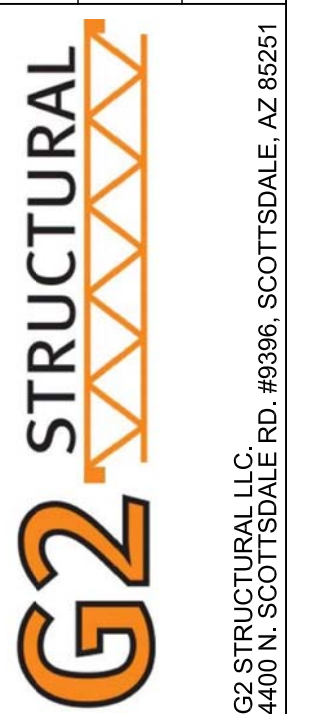


U
-

REVISIONS

ZAXBY'S (G) - TEMPLE, TX
2002 31ST STREET
TEMPLE, TX 76504

ENGINEER: HILL FOLEY & ASSOCIATES
770-932-9858
ARCHITECT: HILL FOLEY FOSTER & ASSOCIATES
770-932-9858
CUSTOMER: SANDOR CONSTRUCTION LLC
254-410-9111



PN-13207
SHEET
4 OF 4

REVISED FOR CONSTRUCTION