

DATE: 08/07/15
REVISIONS
1 8/21/15 PER APPROVED SHOPS

	2A G2T-P IN HANGER TO GLULAM BEAM <small>REFER TO PROJECT PLAN DETAILS FOR MORE INFO NOT TO SCALE</small> 	2 G2T-P IN HANGER TO GLULAM BEAM <small>REFER TO PROJECT PLAN DETAILS FOR MORE INFO NOT TO SCALE</small> 	1 G2T-P IN HANGER TO STUD WALL <small>REFER TO PROJECT PLAN DETAILS FOR MORE INFO NOT TO SCALE</small>
C G2T TYPE PURLIN BRACE DETAIL 	B 2-1/2" THROUGH 4" DIA. SPRINKLER LINE 	A 2" DIA. & SMALLER SPRINKLER LINE 	
F TRAPEZED SPRINKLER LINE 	E LONGITUDINAL SWAY BRACE 	D LATERAL SWAY BRACE 	

RHU413x, H=14" HANGER
(14" CLEAR HEIGHT)

DETAIL	TYPE	HEADER NAILS TOP	HEADER NAILS FACE	STIRRUP NAILS	*LOAD MAX.	UF=1.33UF UPLIFT MAX.	UF=1.60UF UPLIFT MAX.
ALL	RHU413x	4	4	6	6,470	775	930

*LOAD APPLIES TO 100, 115, & 125 DURATIONS.

NAIL SCHEDULE	
KC #	REF # DESCRIPTION
N10	N10 (10d) 9 ga. x 1 1/2" Smooth Shank
N16	N16 (16d) 8 ga. x 2 1/2" Smooth Shank

NOTE: UPLIFT CAPACITIES HAVE BEEN TABULATED USING NAIL VALUES CALCULATED FROM THE NDS '05 STANDARD WITH A 6"-L WOOD HEADER / BEAM AND A POWERGRIP NAIL BEARING BLOCK IN THE TRUSSES. HANGER MANUF. BY KC METAL PRODUCTS, INC. ICC, ESR#2929

WARNING:

Drilling, sawing, sanding or machining wood products generates wood dust and other substances known to the State of California to cause cancer. Avoid inhaling dust generated from wood products or use a dust mask or other safeguards for personal protection.

Wood products emit chemicals known to the State of California to cause birth defects or other reproductive harm.

REVISED FOR CONSTRUCTION



G2 STRUCTURAL LLC
4725 S. CONTRACTORS WAY, TUCSON, AZ 85714
jason@g2structuralaz.com

SHEET
1 OF 2

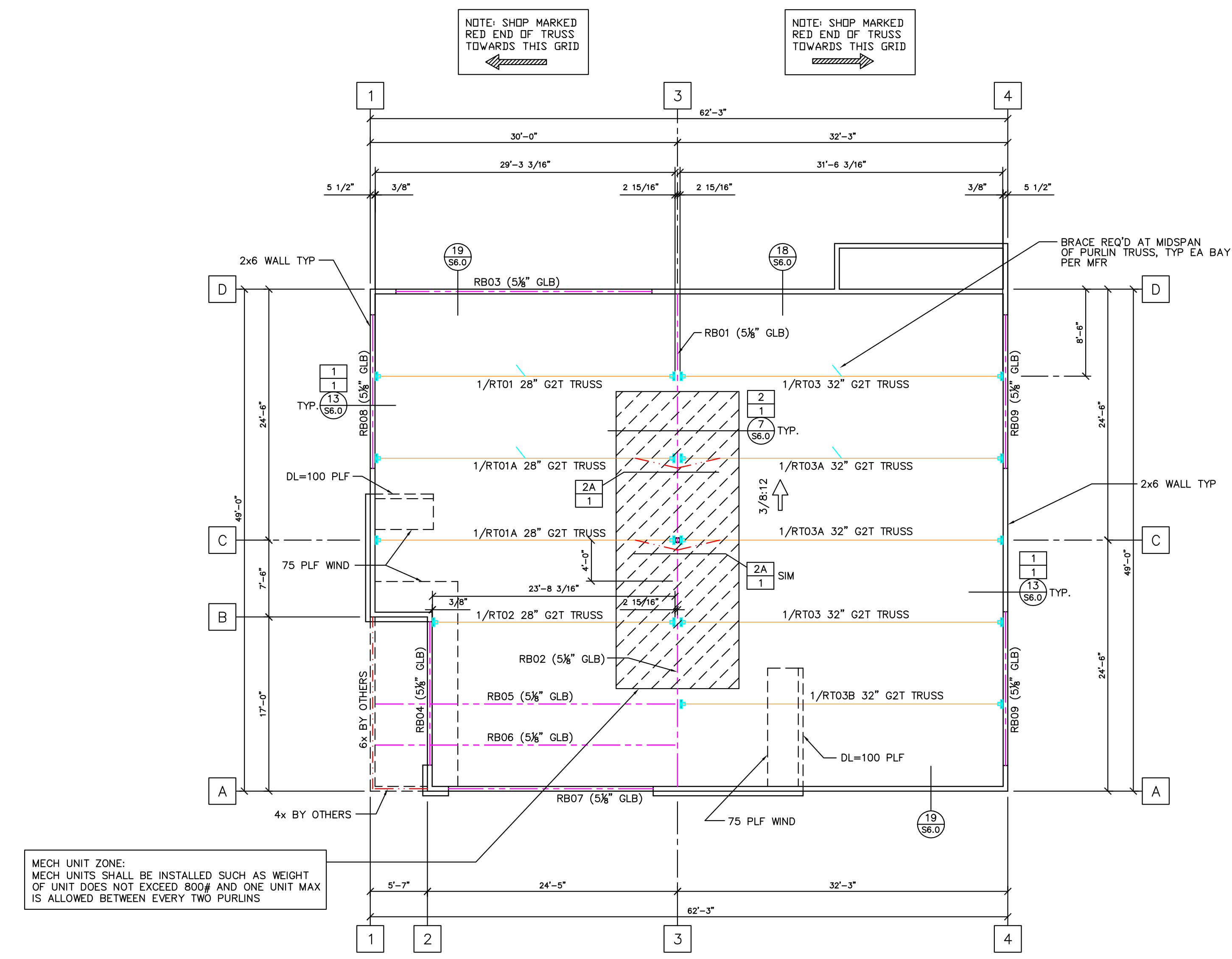
NEWPORT PLACE
4225 MACARTHUR BOULEVARD
NEWPORT BEACH, CALIFORNIA

ENGINEER: BRING
TLOD: 945-421-0144
ARCHITECT:
STOUTENBOURG INC. ARCHITECTS
949-215-4874
CUSTOMER:
ADVANCED FRAMING STRUCTURES
951-735-8400

PROJECT PLANS USED:	
SHEETS	DATE
ARCHITECTURAL DRAWINGS A-101A THRU A-503	04/20/15
STRUCTURAL DRAWINGS S1.0 THRU S8.0	06/16/15
MECHANICAL DRAWINGS NONE PROVIDED	

ROOF DESIGN CRITERIA	
LIVE LOAD	20.0* PSF
DEAD LOAD	17 PSF
TOTAL LOAD	37 PSF
MINIMUM DESIGN DEFLECTION: LL = L/240 TL = L/180 125% LOAD DURATION	
*REDUCIBLE PER CBC NET UPLIFT = 5 PSF W/ 700# AXIAL LOAD AT WALL W/ 700# POINT LOAD AT ANY POINT ALONG THE TOP CHORD	

NOTE: CAMBERING OF TRUSSES IS NOT AN OPTION. THE TRUSSES WILL BE DESIGNED TO SUPPORT THE PROJECT PLAN LOADING



G2T TRUSS LIST						
TYPE	QTY.	CLR SPAN	OVERALL LENGTH	DEPTH	HANGER (RED END)	HANGER (OTHER END)
RT01	1	29'-3 3/16"	29'-3 3/16"	28"	RHU413X H=14" HGRS	RHU413X H=14" HGRS
RT01A	2	29'-3 3/16"	29'-3 3/16"	28"	RHU413X H=14" HGRS	RHU413X H=14" HGRS
RT02	1	23'-8 3/16"	23'-8 3/16"	28"	RHU413X H=14" HGRS	RHU413X H=14" HGRS
RT03	2	31'-6 3/16"	31'-6 3/16"	32"	RHU413X H=14" HGRS	RHU413X H=14" HGRS
RT03A	2	31'-6 3/16"	31'-6 3/16"	32"	RHU413X H=14" HGRS	RHU413X H=14" HGRS
RT03B	1	31'-6 3/16"	31'-6 3/16"	32"	RHU413X H=14" HGRS	RHU413X H=14" HGRS

MISC. MATERIAL LIST		
ITEM	QTY.	USE
RHU413X H=14" HGRS	18	STD G2T HANGERS
PB40	9	STD G2T B/C BRACES (SEE DETAIL)

24F-V4 INDUSTRIAL APPEARANCE UNO 12% MOISTURE CONTENT							
QTY	MARK	WIDTH	DEPTH	LENGTH	CAMBER		
24F-V8	1	RB01	5 1/8	22 1/2	28'-10"	1"	LC=4'-0"
	1	RB02	5 1/8	22 1/2	20'-10"	1/2"	
	1	RB03	5 1/8	21	26'-4"	3/4"	
	1	RB04	5 1/8	16 1/2	15'-4"	1/2"	
24F-V8	1	RB05	5 1/8	16 1/2	30'-0"	1/2"	LC=5'-7"
24F-V8	1	RB06	5 1/8	15	30'-0"	1/2"	LC=5'-7"
	1	RB07	5 1/8	15	21'-4"	3/4"	
	1	RB08	5 1/8	13 1/2	16'-4"	1/2"	
	2	RB09	5 1/8	13 1/2	16'-4"	3/4"	

Roof Placement Plan
SCALE: 1/8"=1'-0"

WARNING:
Drilling, sawing or machining wood products generates wood dust and other substances known to the State of California to cause cancer. Avoid inhaling dust generated from wood products or use a dust mask or other safeguards for personal protection.
Wood products emit chemicals known to the State of California to cause birth defects or other reproductive harm.

REVISED FOR CONSTRUCTION



G2 STRUCTURAL LLC
4725 S. CONTRACTORS WAY, TUCSON, AZ 85714
jason@g2structuralaz.com

SHEET
2 OF 2

NEWPORT PLACE
4225 MACARTHUR BOULEVARD
NEWPORT BEACH, CALIFORNIA

ENGINEER: BRING
TILDEN
949-421-0144
ARCHITECT:
STOUTENBOURG INC. ARCHITECTS
949-215-4874
CUSTOMER:
ADVANCED FRAMING STRUCTURES
951-735-8400

DATE: 08/07/15
REVISIONS
1 8/21/15 PER APPROVED SHOPS