

WARNING:

Drilling, sawing, sanding or machining wood products generates wood dust and other substances known to the State of California to cause cancer. Avoid inhaling dust generated from wood products or use a dust mask or other safeguards for personal protection.

Wood products emit chemicals known to the State of California to cause birth defects or other reproductive harm.

REVISED FOR CONSTRUCTION

ENGINEERS, INC.
HSA & G
715-922-0300
ARCHITECT
BICKEL GROUP ARCHITECTURE
949-757-9411
CUSTOMER
PABON CONSTRUCTION
626-963-3863

G2 STRUCTURAL
G2 STRUCTURAL LLC
4725 S. CONTRACTORS WAY, TUCSON, AZ 85714
jason@g2structuralaz.com

SHEET
1 OF 2

MOUNTAIN GROVE AT CITRUS PLAZA PAD 3
27451 SAN BERNARDINO AVENUE
REDLANDS, CALIFORNIA

DATE: 08/07/15
REVISIONS
1 - 08/07/15 PER APPROVED SHOP DWGS

*JOIST MANUFACTURER TO DESIGN THE SPECIFIED JOISTS ON PLAN FOR SEISMIC LOAD INCLUDING OVERSTRENGTH FACTOR PER ASCE SEC. 12.4.3:
 $1.164 D + 2.5 Q_e$
 $1.123 D + 1.875 Q_e + 0.75 L_r$
 D = DEAD LOAD FOR ROOF + TOWER LOAD
 Q_e = SEISMIC AXIAL LOAD (ASD), SEE PLAN
 L_r = LIVE LOAD FOR ROOF

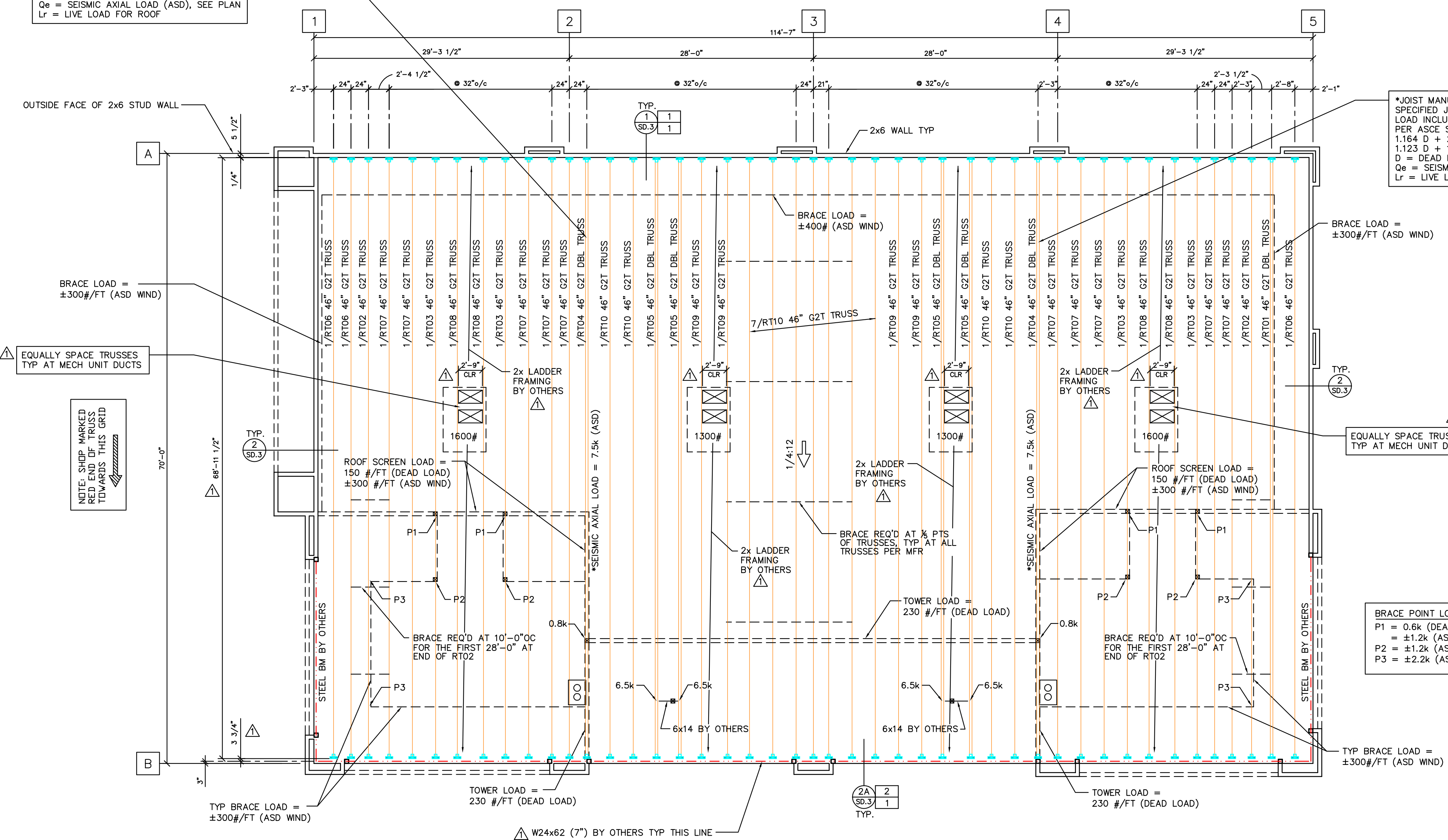
NOTE: ROTATE AND RESIZE ROOF DRAINS AS REQ'D TO FIT BETWEEN TYP SPACED JOISTS

*JOIST MANUFACTURER TO DESIGN THE SPECIFIED JOISTS ON PLAN FOR SEISMIC LOAD INCLUDING OVERSTRENGTH FACTOR PER ASCE SEC. 12.4.3:
 $1.164 D + 2.5 Q_e$
 $1.123 D + 1.875 Q_e + 0.75 L_r$
 D = DEAD LOAD FOR ROOF + TOWER LOAD
 Q_e = SEISMIC AXIAL LOAD (ASD), SEE PLAN
 L_r = LIVE LOAD FOR ROOF

| PROJECT PLANS USED : | |
|------------------------|----------|
| SHEETS | DATE |
| ARCHITECTURAL DRAWINGS | |
| A-0.0 THRU A-6.0 | 05/20/15 |
| STRUCTURAL DRAWINGS | |
| S-1 THRU SD-5 | 07/23/15 |
| MECHANICAL DRAWINGS | |
| M1 THRU M3 | 01/21/15 |

| ROOF DESIGN CRITERIA | |
|---|------------|
| LIVE LOAD | 20 PSF |
| DEAD LOAD | 16 PSF |
| TOTAL LOAD | 36 PSF |
| MINIMUM DESIGN DEFLECTION: | |
| LL = L/360 | TL = L/240 |
| 125% LOAD DURATION | |
| ALL JOISTS SHALL DESIGN FOR 1000# AXIAL WIND LOAD (ASD) AND 2700# AXIAL WIND LOAD (ASD) FOR JOIST AT COLUMN LOCATION. | |
| ALL JOISTS SHALL DESIGN FOR 250# CONCENTRATED LOAD AT ANY PANEL POINT FOR ROOF WIND NET UPLIFT SEE DIAGRAM BLW | |

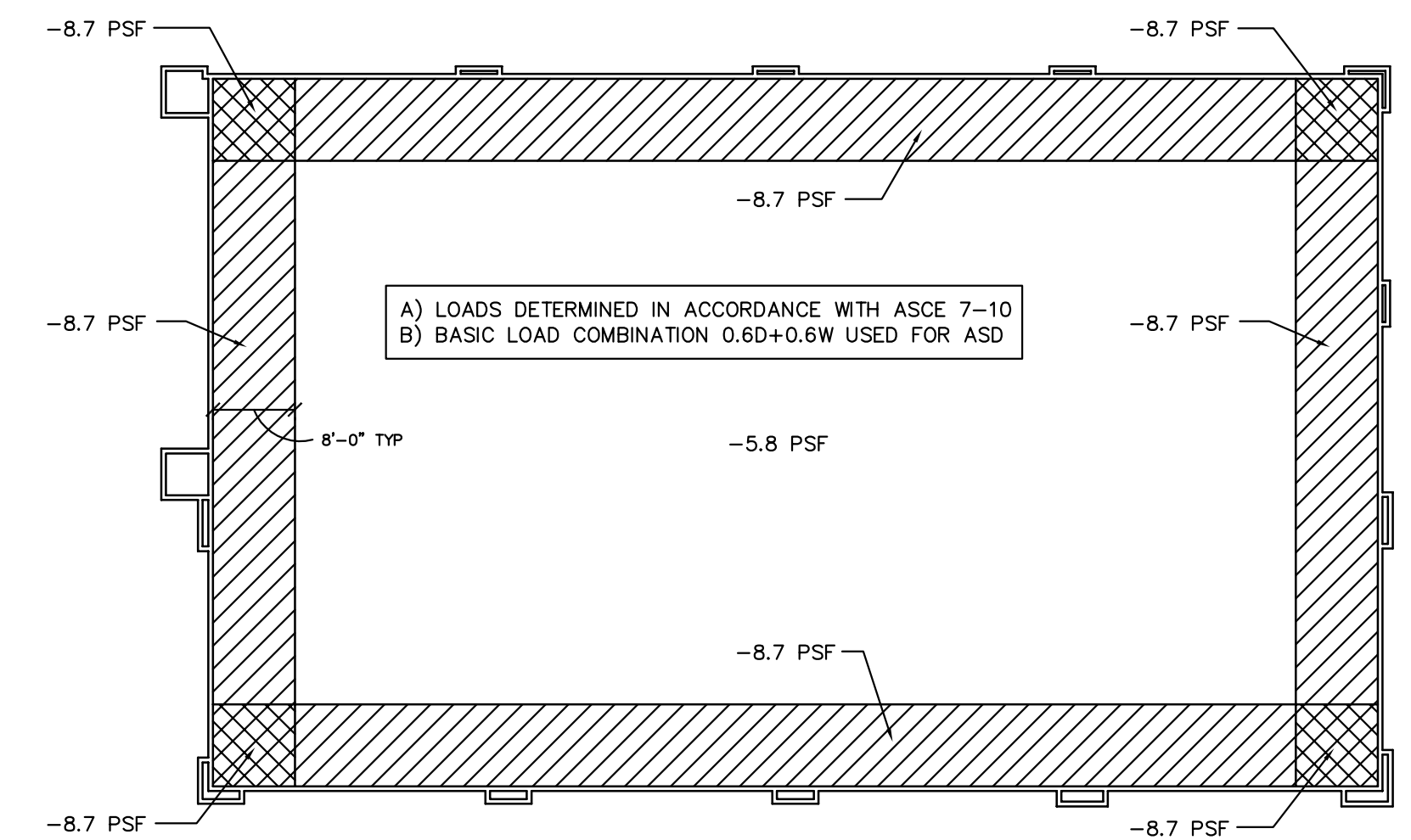
DATE: 08/07/15
 REVISIONS
 1 - 08/01/15 PER APPROVED SHOP DWGS



| G2T TRUSS LIST | | | | | | |
|----------------|------|-------------|----------------|---------------|-------------------------|-------------------------|
| TYPE | QTY. | CLR SPAN | OVERALL LENGTH | DEPTH/TYPE | HANGER (RED END) | HANGER (OTHER END) |
| RT01 | 1 | 68'-11 1/2" | 68'-11 1/4" | DBL 46" G2T46 | UL-BHS314X-2 H=13" HGRS | UL-BHS314X-2 H=13" HGRS |
| RT02 | 2 | 68'-11 1/2" | 68'-11 1/4" | 46" G2T46 | UL-BHS314X H=13" HGRS | UL-BHS314X H=13" HGRS |
| RT03 | 4 | 68'-11 1/2" | 68'-11 1/4" | 46" G2T46 | BHV413X H=13" | BHV413X H=13" |
| RT04 | 2 | 68'-11 1/2" | 68'-11 1/4" | DBL 46" G2T46 | UL-BHS314X-2 H=13" HGRS | UL-BHS314X-2 H=13" HGRS |
| RT05 | 4 | 68'-11 1/2" | 68'-11 1/4" | DBL 46" G2T44 | UL-BHS314X-2 H=13" HGRS | UL-BHS314X-2 H=13" HGRS |
| RT07 | 3 | 68'-11 1/2" | 68'-11 1/4" | 46" G2T44 | BHV413X H=13" | BHV413X H=13" |
| RT07 | 10 | 68'-11 1/2" | 68'-11 1/4" | 46" G2T45 | BHV413X H=13" | BHV413X H=13" |
| RT08 | 4 | 68'-11 1/2" | 68'-11 1/4" | 46" G2T46 | BHV413X H=13" | BHV413X H=13" |
| RT09 | 4 | 68'-11 1/2" | 68'-11 1/4" | 46" G2T46 | BHV413X H=13" | BHV413X H=13" |
| RT10 | 11 | 68'-11 1/2" | 68'-11 1/4" | 46" G2T45 | BHV413X H=13" | BHV413X H=13" |

| MISC. MATERIAL LIST | | |
|---------------------|--------|----------------------------------|
| ITEM | QTY. | USE |
| BHV413X H=13" | 72 | STD G2T HANGERS |
| UL-BHS314X H=13" | 4 | STD G2T HANGERS |
| UL-BHS314X-2 H=13" | 14 | STD DBL G2T HANGERS |
| 2x4 B/C BRACING | 520 LF | STD G2T B/C BRACING (SEE DETAIL) |

BRACE POINT LOAD
 P1 = 0.6k (DEAD LOAD)
 P2 = ±1.2k (ASD WIND)
 P3 = ±1.2k (ASD LOAD)
 P3 = ±2.2k (ASD LOAD)



Roof Placement Plan
 SCALE: 1/8"=1'-0"

Roof Wind Net Uplift Diagram
 NOT TO SCALE

WARNING:
 Drilling, sawing, sanding or machining wood products generates wood dust and other substances known to the State of California to cause cancer. Avoid inhaling dust generated from wood products or use a dust mask or other safeguards for personal protection.
 Wood products emit chemicals known to the State of California to cause birth defects or other reproductive harm.

MOUNTAIN GROVE AT CITRUS PLAZA PAD 3
 27451 SAN BERNARDINO AVENUE
 REDLANDS, CALIFORNIA

REVISED FOR CONSTRUCTION

ENGINEERS, INC.
 HSA & ASSOCIATES
 714-922-0300
 ARCHITECTS
 BICKEL GROUP ARCHITECTURE
 949-757-9411
 CUSTOMER
 PABON CONSTRUCTION
 626-963-3863

G2 STRUCTURAL
 G2 STRUCTURAL LLC
 4725 S. CONTRACTORS WAY, TUCSON, AZ 85714
 jason@g2structural.com