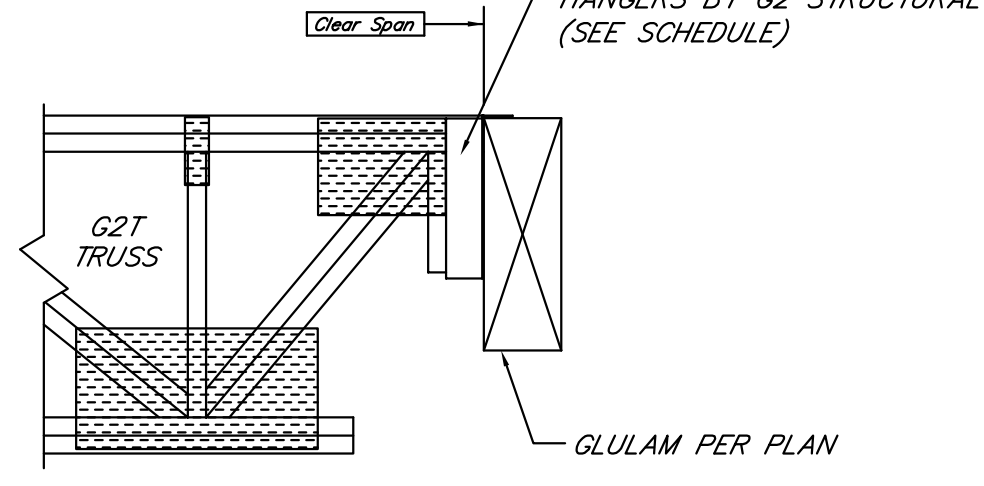
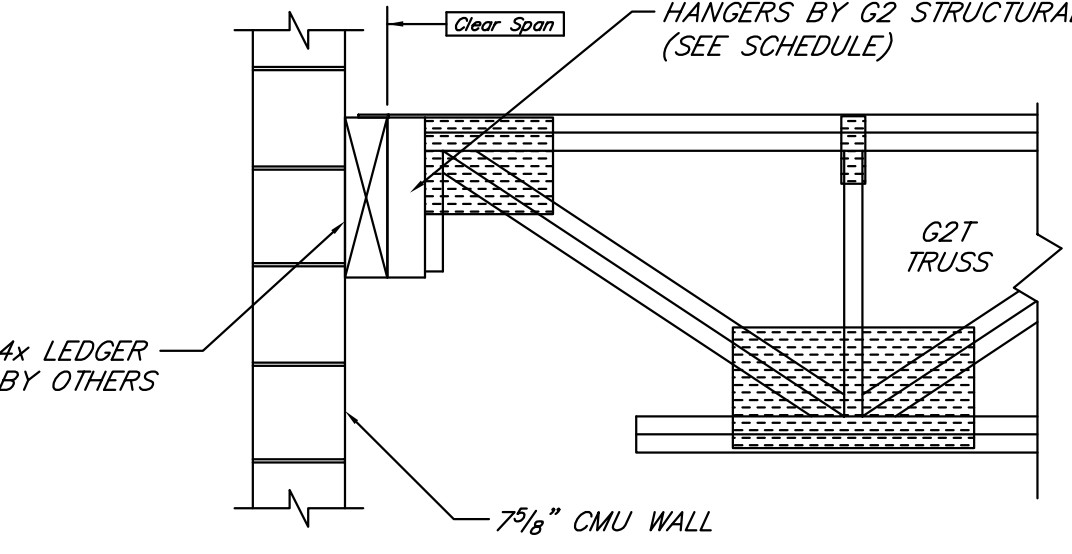
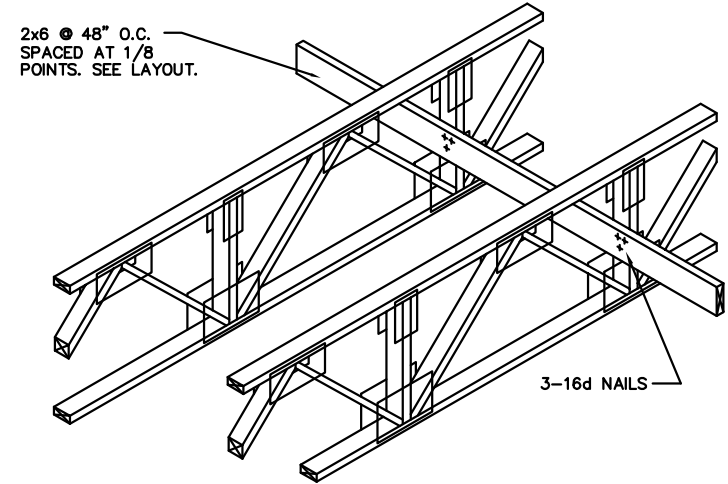
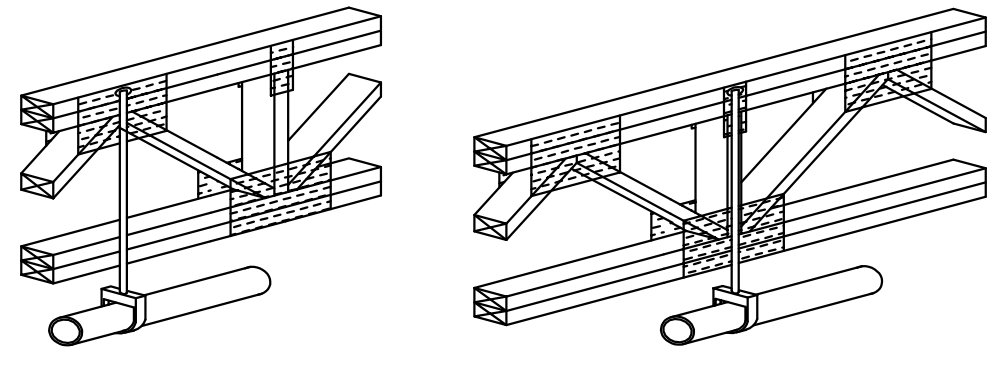
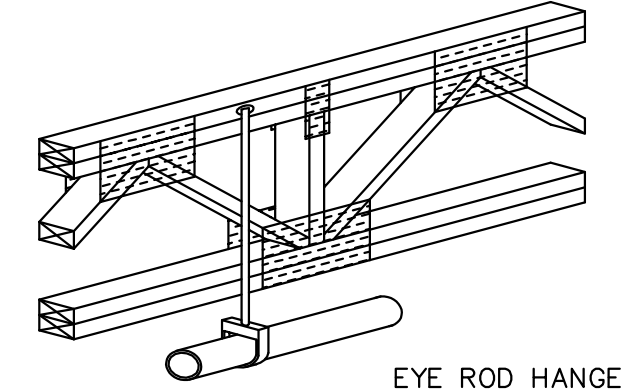
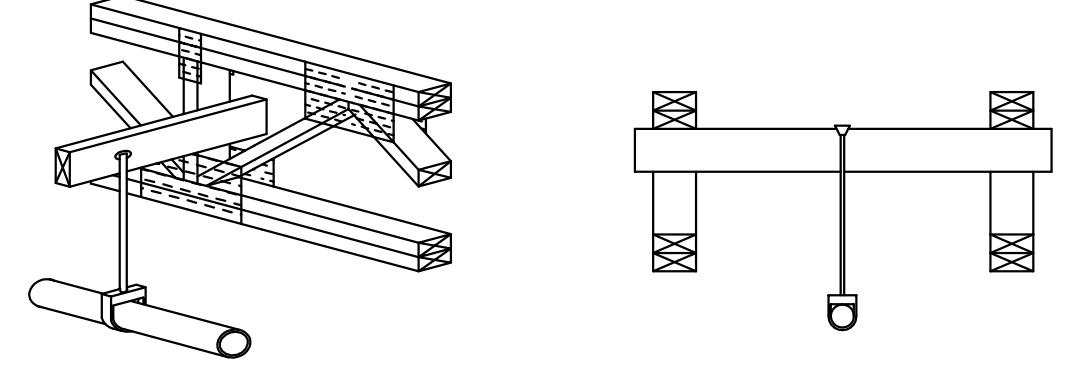
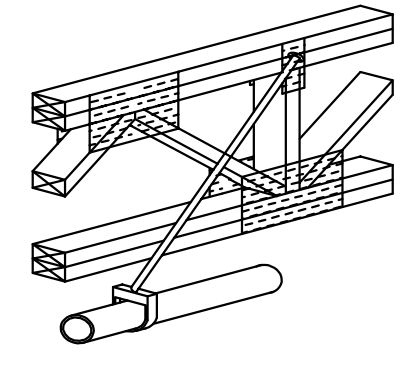
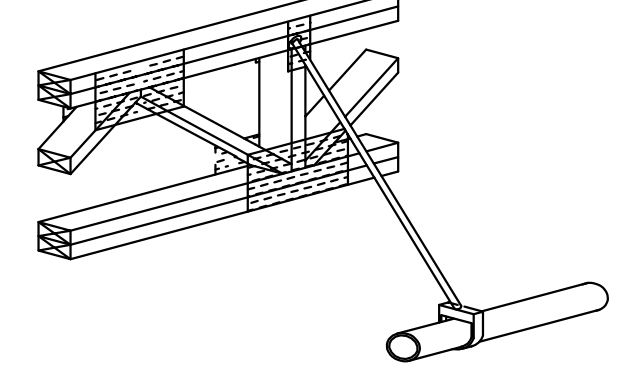
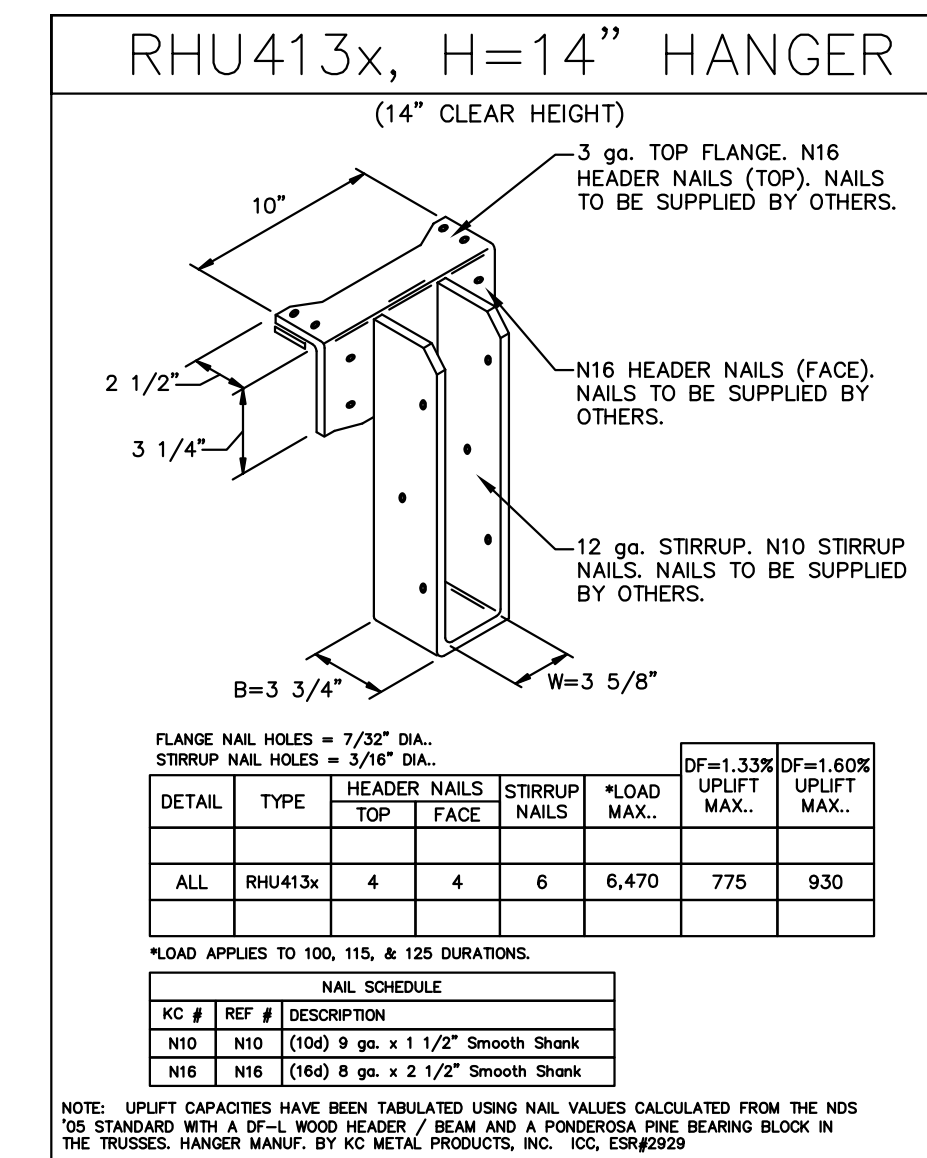


WARNING:

Drilling, sawing, sanding or machining wood products generates wood dust and other substances known to the State of California to cause cancer. Avoid inhaling dust generated from wood products or use a dust mask or other safeguards for personal protection.

Wood products emit chemicals known to the State of California to cause birth defects or other reproductive harm.

			2	G2T IN HANGER TO GLULAM BEAM	1	G2T IN HANGER TO LEDGER
				REFER TO PROJECT PLAN DETAILS FOR MORE INFO NOT TO SCALE 		REFER TO PROJECT PLAN DETAILS FOR MORE INFO NOT TO SCALE 
C	BOTTOM CHORD BRACING	B	2-1/2" THROUGH 4" DIA. SPRINKLER LINE		A	2" DIA. & SMALLER SPRINKLER LINE
				EYE ROD HANGER OR NFPA APPROVED ALTERNATE WITH (1) FASTENER. LOCATE ONLY AT TOP CHORD PANEL POINTS THROUGH METAL GUSSET PLATE. NORMALLY FOR PIPE SIZES 2-1/2" THROUGH 4" MAXIMUM; FOR UP TO A 4" PIPE SIZE USE UP TO (1) 1/2" THROUGH BOLT INSTALLED THROUGH THE GUSSET PLATE AT A TRUSS TOP CHORD PANEL POINT. G2 STRUCTURAL RECOMMENDS 4" PIPE SIZE MAINS BE SUPPORTED WITH THIS DETAIL AND SIZES GREATER THAN 4" USE 4X BLOCKING OR TRAPEZE BETWEEN 2 TRUSSES.		
				EYE ROD HANGER OR NFPA APPROVED ALTERNATE WITH (1) LAG SCREW - LOCATE ANYWHERE ALONG LENGTH OF TOP CHORD. NORMALLY FOR BRANCH LINES. MAXIMUM 2" PIPE SIZE - USE UP TO (1) 3/8" x 2-1/2" LAG SCREW.		
F	TRAPEZED SPRINKLER LINE	E	LONGITUDINAL SWAY BRACE		D	LATERAL SWAY BRACE
				TRAPEZE CAN BE WOOD MEMBER, STEEL, PIPE OR ANGLE, AND MUST BE IN ACCORDANCE WITH NFPA. MAXIMUM LAG SCREW SIZE IS 1/2" x 3". MAXIMUM 6" PIPE SIZE PERMITTED BY NFPA. LOCATE TRAPEZE AT WEB VERTICLE OR AT TOP CHORD PANEL POINTS TIGHT AGAINST WEBS OR METAL GUSSET PLATES.		
				ATTACH SWAY BRACE TO TRUSS w/ UP TO 3" THRU OR LAG BOLT INTO TOP CHORD AT PANEL POINT THRU METAL GUSSET PLATE. 3/8" THRU OR LAG BOLT EITHER THRU METAL GUSSET PLATE OR NOT MORE THAN 2" FROM EDGE OF PLATE. LOCATED IN CENTER OF TOP CHORD OF SINGLE OR MULTIPLE PLY TRUSS. THRU BLOT OR LAG BOLT MUST BE PRE-DRILLED WITH TIGHT TOLERANCE. MAXIMUM BRACE FORCE = 450#		ATTACH SWAY BRACE TO TRUSS w/ UP TO 3" THRU OR LAG BOLT INTO TOP CHORD AT PANEL POINT THRU METAL GUSSET PLATE. 3/8" THRU OR LAG BOLT EITHER THRU METAL GUSSET PLATE OR NOT MORE THAN 2" FROM EDGE OF PLATE. LOCATED IN CENTER OF TOP CHORD OF SINGLE OR MULTIPLE PLY TRUSS. THRU BLOT OR LAG BOLT MUST BE PRE-DRILLED WITH TIGHT TOLERANCE. MAXIMUM BRACE FORCE = 450#



REVISED FOR CONSTRUCTION



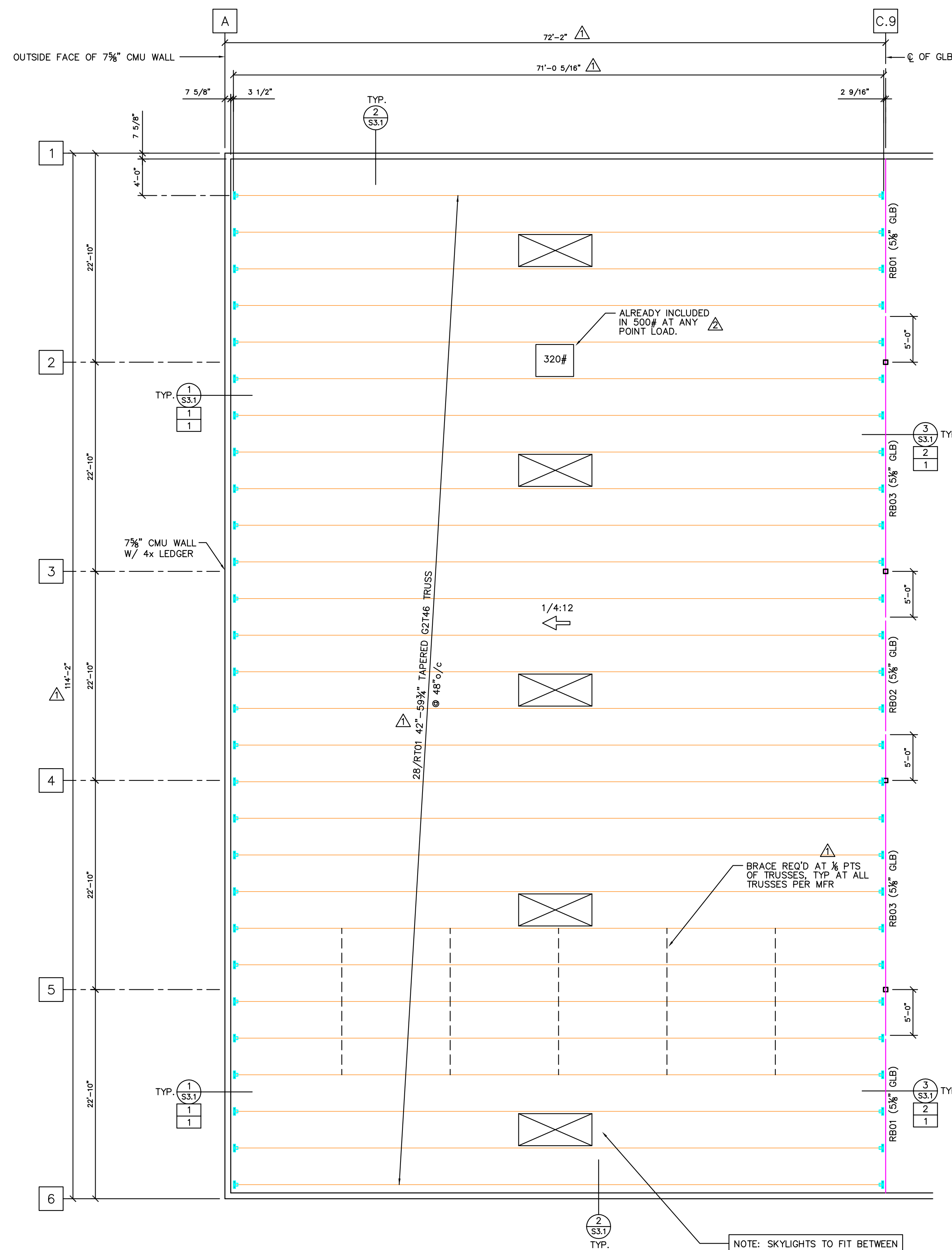
ENGINEER
GRIMM & ASSOCIATES, INC.
949-234-1150
ARCHITECT
WHITFIELD ASSOCIATES, INC.
949-234-1500
CUSTOMER
KUNZIK & SARA CONSTRUCTION
760-591-3108

SHEET
1 OF 2

EMPIRE NISSAN SERVICE EXPANSION
1377 KETTERING DRIVE
ONTARIO, CALIFORNIA 91761

DATE: 08/10/15
REVISIONS
1 - 10/28/15 PER REVISION AND RESUBMIT
2 - 1/28/16 PER APPROVED SHOPS

NOTE: SHOP MARKED BLACK END OF TRUSS TOWARDS THIS GRID



PROJECT PLANS USED:	
SHEETS	DATE
ARCHITECTURAL DRAWINGS	
A1.1	10/15
STRUCTURAL DRAWINGS	
S1.1.1 THRU S3.1	10/22/15
MECHANICAL DRAWINGS	
NONE PROVIDED	

ROOF DESIGN CRITERIA	
LIVE LOAD	18.4 PSF
DEAD LOAD	15 PSF
TOTAL LOAD	33.6 PSF
MINIMUM DESIGN DEFLECTION:	
LL = L/360	TL = L/180
125% LOAD DURATION	

WL = 5 PSF (NET UPLIFT)
 AXIAL LOAD = 3500# (ULT.)
 W/ 500# POINT LOAD AT ANY POINT
 CAMBER = 1.5x DL DEFLECTION TO MINIMIZE TL DEFLECTION
 DOUGLAS FIR SPECIES TO BE USED FOR ALL WEBS AND CHORDS OF TRUSSES
 ADD SELF WEIGHT OF TRUSS (4 PSF).
 CODE - 2013 C.B.C

G2T TRUSS LIST						
TYPE	QTY.	CLR SPAN	MFR LENGTH	DEPTH/TYPE	HANGER (BLACK END)	HANGER (OTHER END)
RT01	28	71'-0 5/16'	70'-11 9/16'	42"-59 3/4" G2T46	RHU413X H=14" HGRS	RHU413X H=14" HGRS

- USE A 3 1/2" X 4 3/8" MIN. BEARING BLOCK TO ACCOMMODATE HANGER NAILING.

MISC. MATERIAL LIST		
ITEM	QTY.	USE
RHU413X H=14" HGRS	56	STD G2T HANGERS
2x6 B/C BRACING	640 LF	STD G2T B/C BRACING (SEE DETAIL)

PLYWOOD EDGE BLOCKS			
QTY	MARK	DESCRIPTION	LENGTH
460	PEB1	3 X 4 NOM. W/ Z-CLIPS BOTH ENDS	3'-8 1/4"
35	PEB2	3 X 4 NOM. W/ Z-CLIP ONE END	3'-8 1/4"
35	ZC01	LOOSE Z-CLIPS	

24F-V4 INDUSTRIAL APPEARANCE 14% MOISTURE CONTENT					
QTY	MARK	WIDTH	DEPTH	LENGTH	CAMBER
2	RB01	5 1/8	22 1/2	18'-0"	STD
1	RB02	5 1/8	22 1/2	13'-3"	STD

24F-V8 INDUSTRIAL APPEARANCE 14% MOISTURE CONTENT					
QTY	MARK	WIDTH	DEPTH	LENGTH	CAMBER
2	RB03	5 1/8	30	33'-4"	STD

RC=5'-0" LC=5'-0"

WARNING:
 Drilling, sawing, sanding or machining wood products generates wood dust and other substances known to the State of California to cause cancer. Avoid inhaling dust generated from wood products or use a dust mask or other safeguards for personal protection.
 Wood products emit chemicals known to the State of California to cause birth defects or other reproductive harm.

Roof Placement Plan

SCALE: 1/8"=1'-0"

DATE: 08/10/15
REVISIONS
1 - 10/28/15 PER REVISE AND RESUBMIT
2 - 1/28/16 PER APPROVED SHOPS

EMPIRE NISSAN SERVICE EXPANSION
 1377 KETTERING DRIVE
 ONTARIO, CALIFORNIA 91761

ENGINEER
 GRIMM & ASSOCIATES
 949-250-3150
 ARCHITECT
 WHITFIELD ASSOCIATES, INC.
 949-234-1950
 CUSTOMER
 KUNZIK & SARA CONSTRUCTION
 760-591-1108

REVISED FOR CONSTRUCTION

G2 STRUCTURAL

G2 STRUCTURAL LLC
 4725 S. CONTRACTORS WAY, TUCSON, AZ 85714
 ernie@g2structural.com