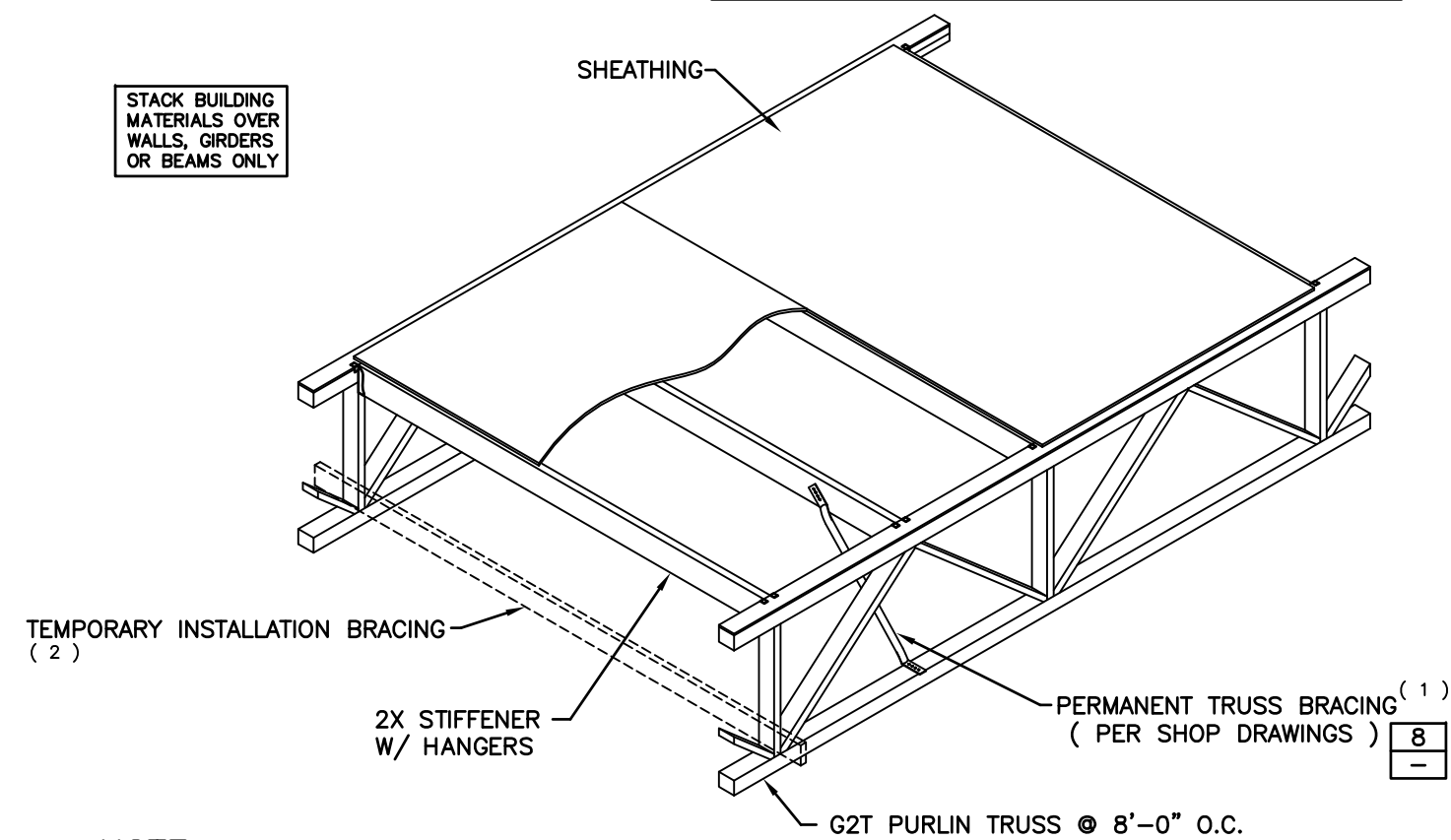


ATTENTION

NO ONE SHOULD BE ALLOWED ON ANY G2T TRUSS UNTIL ALL HANGERS & CROSS BRIDGING, IF REQ'D, AND TEMPORARY BRACING ARE IN PLACE AND NAILED SECURELY. SERIOUS ACCIDENTS MAY OCCUR UNLESS CARE IS TAKEN TO PROPERLY BRACE DURING CONSTRUCTION. THIS DETAIL SHOULD BE USED AS A GUIDELINE FOR BRACING.

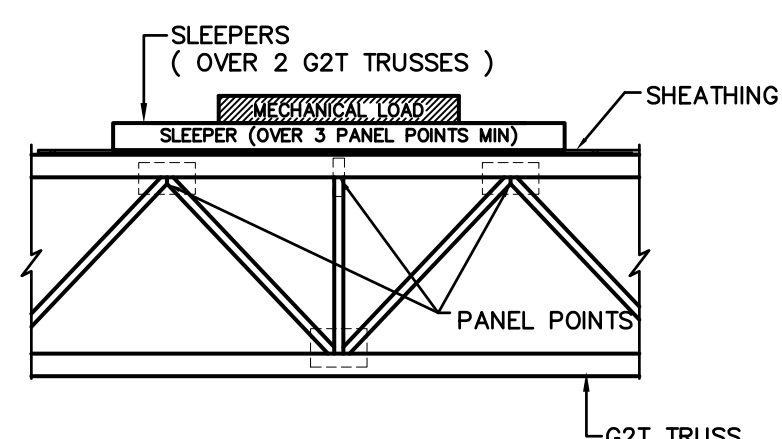
STACK BUILDING MATERIALS OVER WALLS, GIRDERS OR BEAMS ONLY



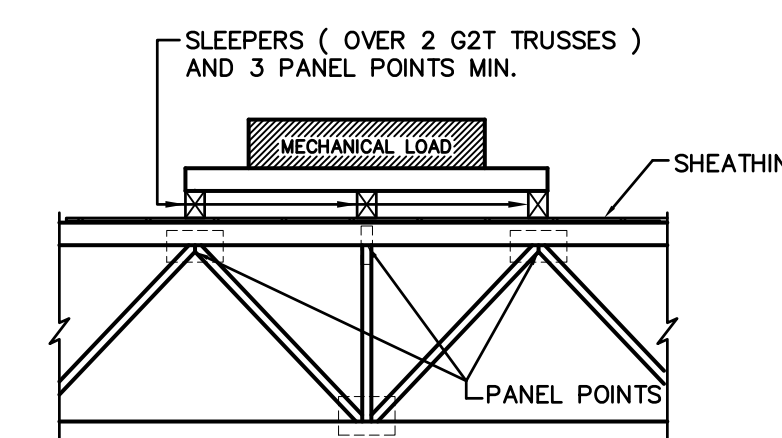
NOTE:

- (1) PERMANENT BRACING SHALL BE PER FABRICATOR'S RECOMMENDATIONS. IF PERMANENT BRACING IS USED AS THE INSTALLATION BRACING, IT MUST BE INSTALLED AS EACH TRUSS IS PLACED. A MINIMUM OF TWO (2) INSTALLATION BRACES ARE REQUIRED AT ALL SPANS GREATER THAN 32'-0".
- (2) INSTALLATION BRACING IN ADDITION TO OR IN LEIU OF PERMANENT TRUSS BRACING TO BE DESIGNED AND INSTALLED BY THE INSTALLATION CONTRACTOR.

1 ERECTION BRACING



PARALLEL CONDITION



PERPENDICULAR CONDITION

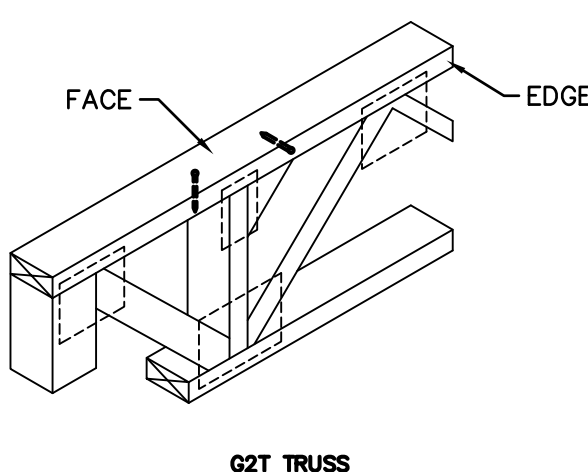
NOTES

- COORDINATE MECHANICAL LOCATIONS WITH LAYOUT AND G2T CALCULATIONS
- SLEEPERS MUST BE LOCATED AT PANEL POINTS

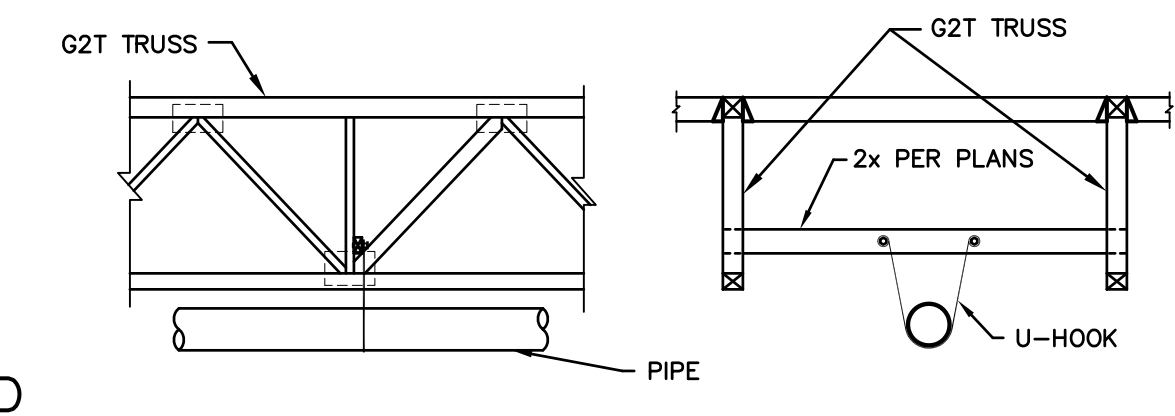
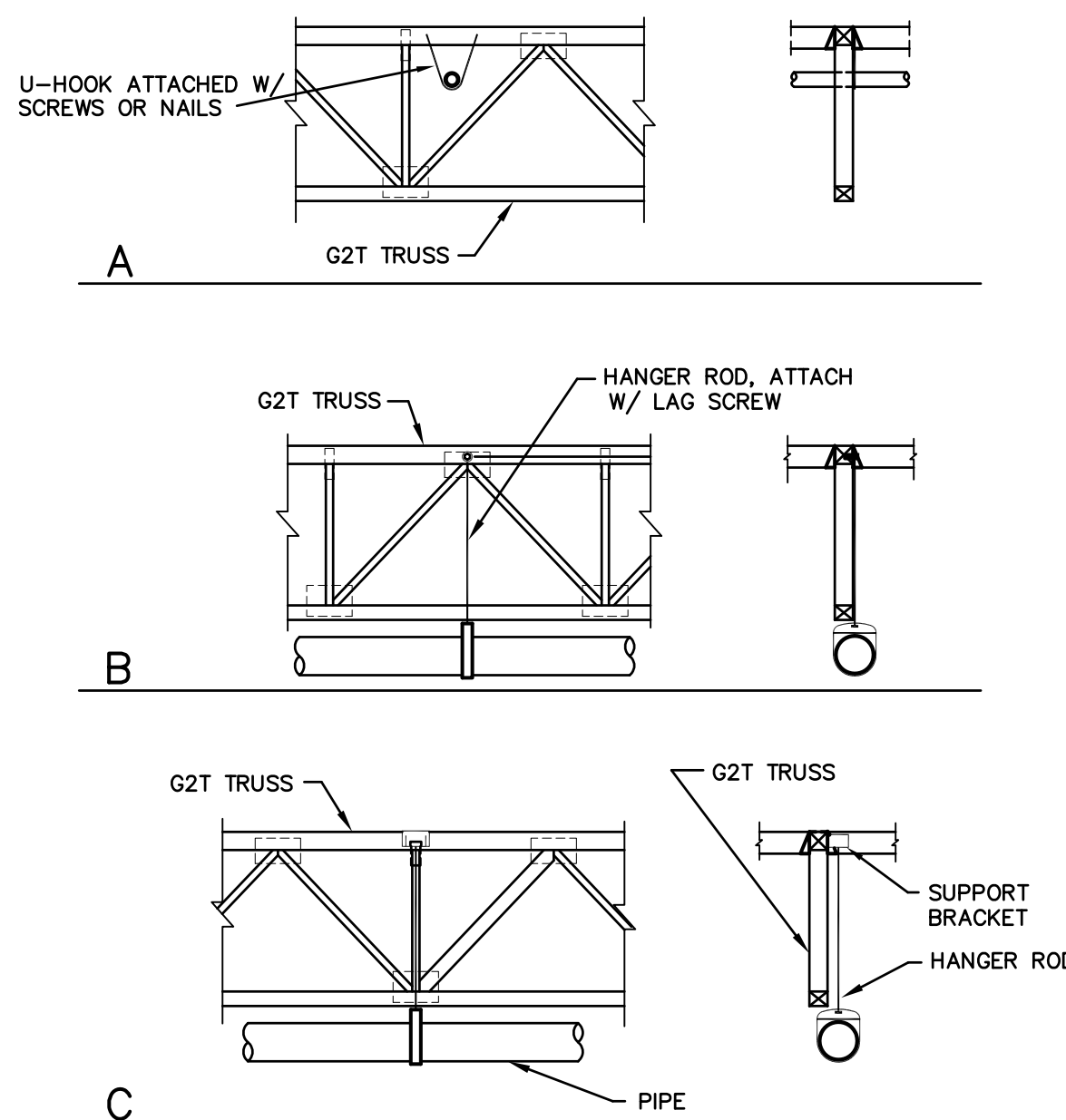
2 MECHANICAL LOADS ON G2T TRUSSES

G2T TRUSS NAILING CHART

NAIL TYPE	NAIL SIZE	MSR	FACE EDGE	
			FACE	EDGE
8d	BOX 0.113"x2 1/2"	2"	2"	2"
	COMMON 0.131"x2 1/2"	2"	2"	2"
10d	BOX 0.128"x3"	2"	2"	4"
	COMMON 0.148"x3"	3"	4"	4"
12d	BOX 0.128"x3 1/4"	3"	2"	4"
	COMMON 0.148"x3 1/4"	3"	4"	4"
16d	BOX 0.135"x3 1/2"	3"	3"	4"
	COMMON 0.148"x3 1/4"	3"	4"	6"



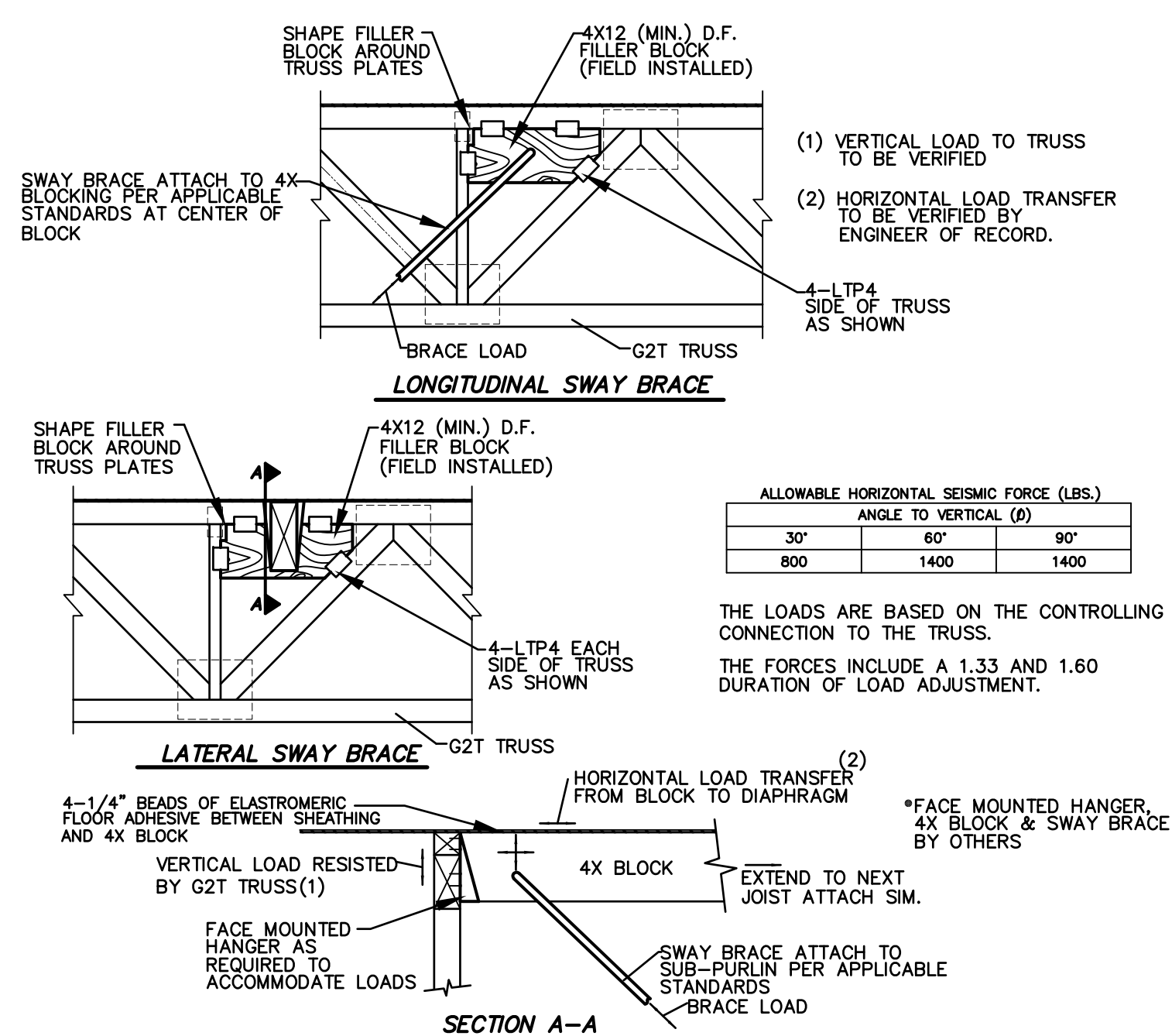
3 NAILING CHART



NOTES:

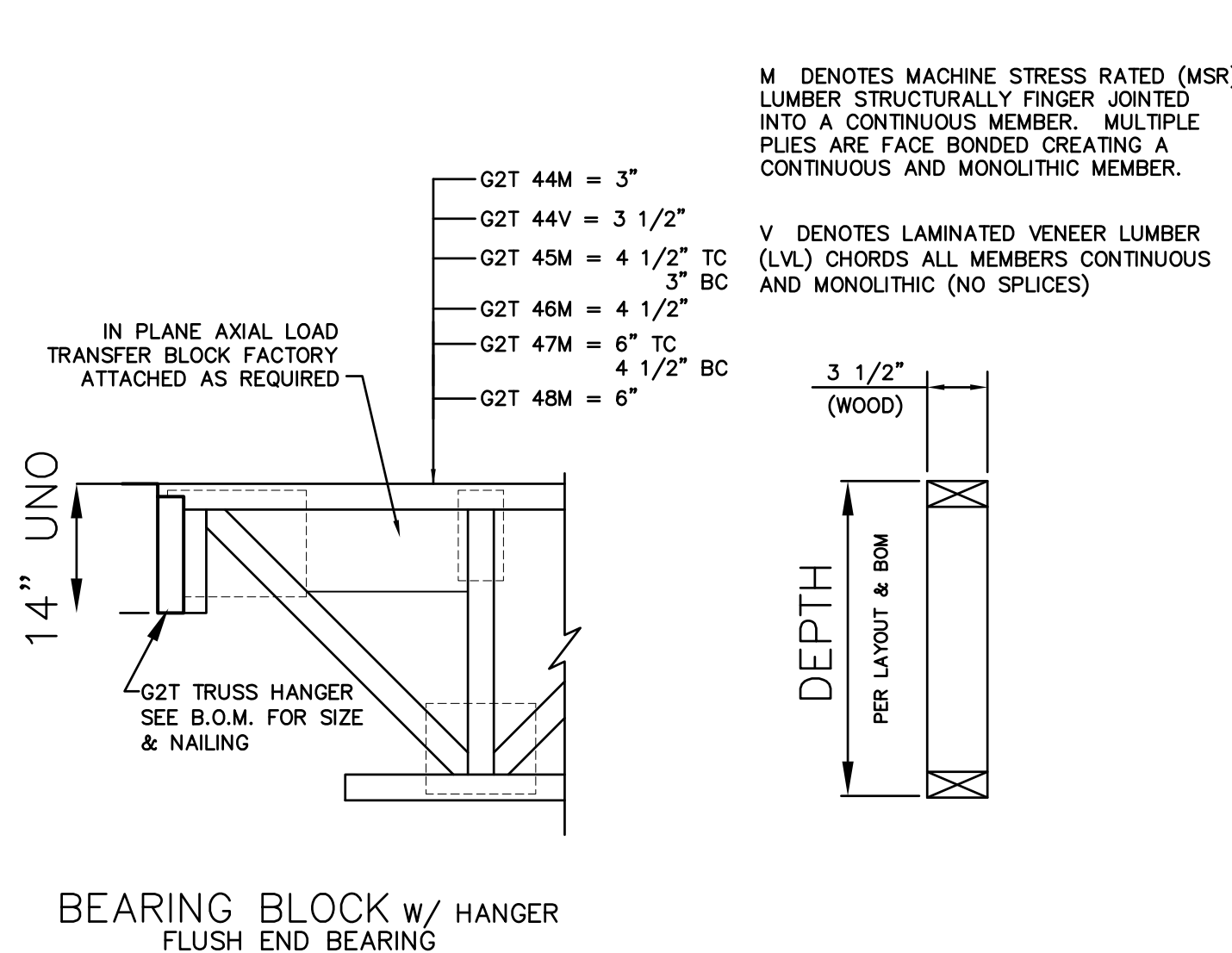
- WOOD SCREWS WITH A MAXIMUM DIAMETER OF 5/16" MAY BE USED ANYWHERE ON THE TOP CHORD OF THE G2T TRUSS WITHOUT PRE-DRILLING A PILOT HOLE, UNLESS NOTED OTHERWISE ON PLANS.
- BOLTS OR LAG SCREWS HAVING A DIAMETER OF 3/8" OR GREATER MUST BE LOCATED IN THE CONNECTOR PLATE AT THE TOP CHORD OF THE G2T TRUSS.
- BOLTS OR LAG SCREWS HAVING A DIAMETER OF 1/2" OR GREATER MUST HAVE PRE-DRILLED HOLES LOCATED IN THE CONNECTOR PLATE AT THE TOP CHORD OF THE G2T TRUSS.
- DO NOT DRILL HOLES, DRIVE HEAVY SCREWS, OR USE LAG BOLTS IN THE BOTTOM CHORD OF G2T TRUSS.
- COORDINATE ATTACHMENT OF SPRINKLER PIPE 4" DIAMETER AND LARGER WITH TRUSS LAYOUT AND CALCULATIONS.
- BOLTS OR LAG SCREWS INTO THE TOP CHORD SHALL BE LIMITED TO A MAXIMUM DIAMETER AS FOLLOWS: 1/2" @ G2T44; 7/8" @ G2T46
- NOTE: ALL CONNECTIONS, CLAMPS, HANGERS, RODS, OR SUPPORT ETC.... SHALL BE IN ACCORDANCE WITH NFPA 13

4 FIRE SPRINKLER ATTACHMENT DETAIL

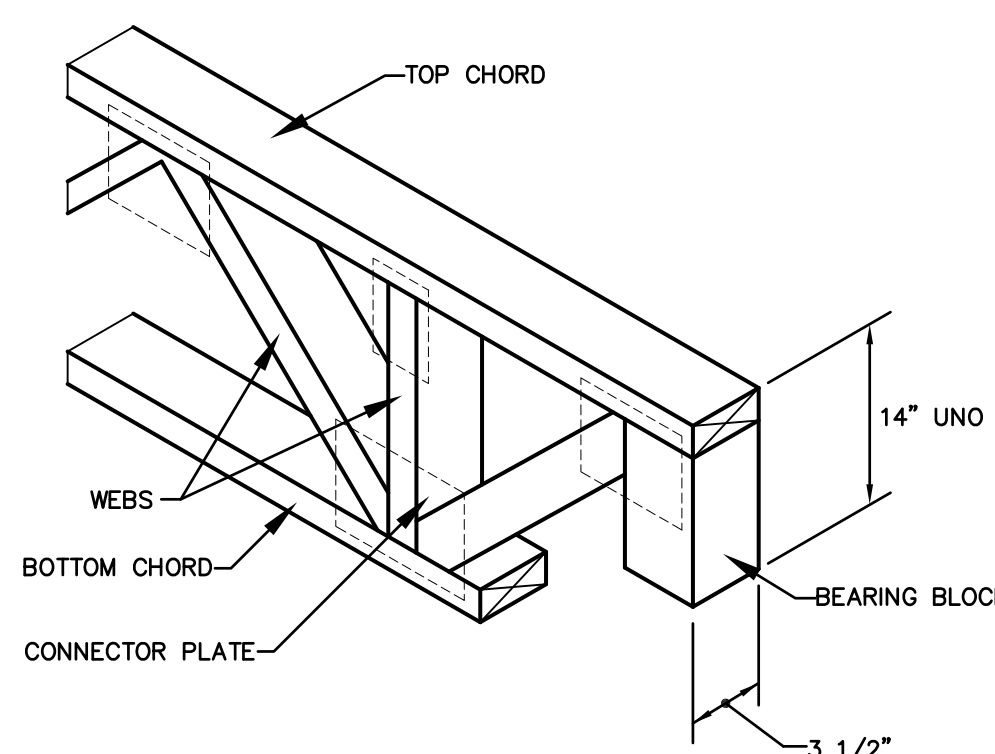


5A FIRE SPRINKLER SWAY BRACE DETAIL

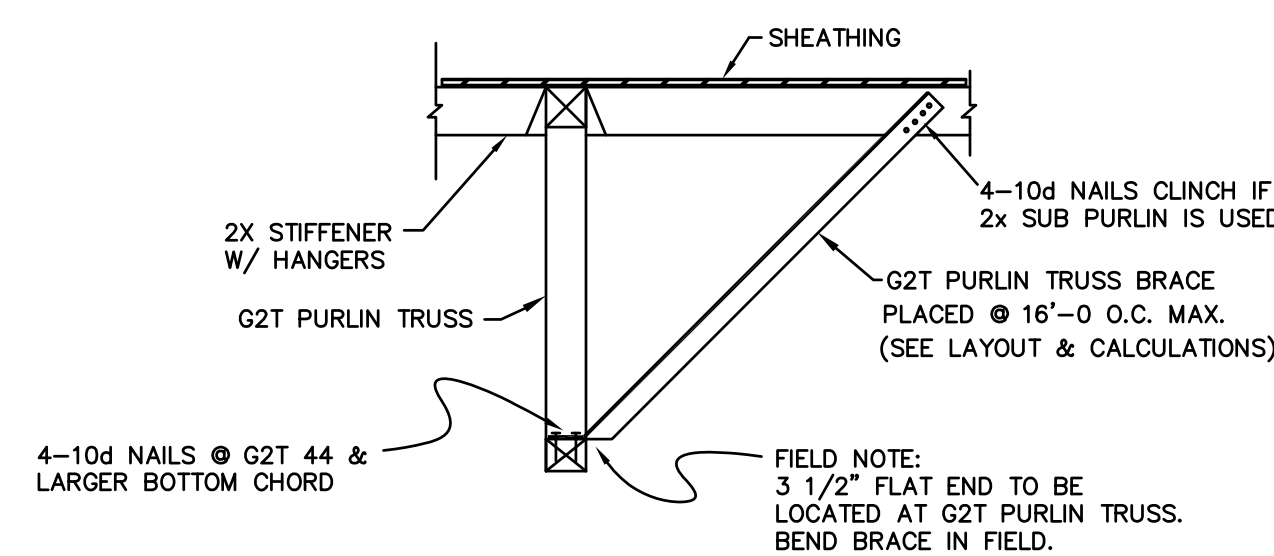
6 G2T TRUSS GENERAL DIMENSIONS



7 G2T TRUSS W/ BEARING BLOCK



8 PERMANENT G2T ERECTION BRACE



9 G2T TRUSS NOTES

G2T PURLIN JOIST PRODUCT COVER SHEET

JOB SITE HANDLING OF G2T OPEN WEB TRUSSES

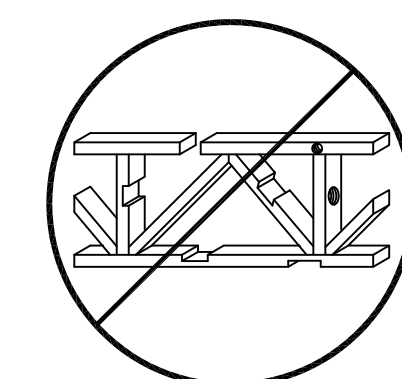
IT IS THE BUILDING CONTRACTOR'S RESPONSIBILITY TO UNLOAD THE G2T TRUSSES FROM THE TRUCK AND FOR ALL HANDLING THEREAFTER. THE G2T OPEN WEB TRUSSES GUARANTEE ONLY APPLIES AS LONG AS THE PRODUCT IS NOT DAMAGED OR ALTERED IN ANY WAY, IS INSTALLED IN A WORKMANLIKE MANNER. G2T TRUSSES WILL BE DELIVERED TO THE JOBSITE IN BUNDLES BANDED TOGETHER FOR HANDLING EASE. TO AVOID DAMAGE, TRUSSES SHOULD BE LEFT IN THESE BUNDLES UNTIL READY FOR INSTALLATION IN THE STRUCTURE. A CARELESS CRANE OR FORKLIFT OPERATOR CAN DAMAGE G2T TRUSSES. NEVER HANDLE G2T TRUSSES FLAT - KEEP IN AN UPRIGHT POSITION.

STORAGE OF G2T OPEN WEB TRUSSES

DURING STORAGE AT THE JOBSITE, KEEP G2T TRUSSES IN AN UPRIGHT POSITION. THE BUNDLES SHOULD BE SUPPORTED ON LEVEL STICKERS TO KEEP THE G2T TRUSSES OUT OF THE MUD AND DIRT. STACKING OF BUNDLES IS PERMITTED IF AN ADEQUATE NUMBER OF STICKERS ARE PROVIDED TO PREVENT DAMAGE AND NORMAL SAG. PRECAUTIONS ARE FOLLOWED. ALL GLUE USED IN G2T TRUSSES IS WATER PROOF. HOWEVER, LONG EXPOSURE TO WATER AND SUN WILL CAUSE SOME DEGRADATION AND CHECKING OF WOOD. G2T TRUSSES SHOULD RECEIVE THE SAME PROTECTION FROM WEATHER AS OTHER WOOD PRODUCTS.

TYPICAL G2T PROJECT NOTES:

- FOR NOTES, DETAILS, AND DIMENSIONS NOT ON THESE SHOP DRAWINGS, REFER TO PROJECT PLANS.
- SEE BILLS OF MATERIAL FOR ITEMS FURNISHED.
- ALL CLOUDED NOTES, DIMENSIONS, ETC. REQUIRE VERIFICATION AND MUST BE MARKED EITHER "OK" OR THE CORRECT INFORMATION PROVIDED BY CUSTOMER PRIOR TO RETURN TO BEING RETURNED FOR FABRICATION.
- PLEASE BE AWARE THAT ANY CLOUDED ITEMS NOT ACKNOWLEDGED WILL REQUIRE CONTACT WITH RESPONSIBLE PARTIES AND MAY CAUSE DELAY IN THE PROCESSING OF YOUR ORDER.
- PLEASE VERIFY THAT ALL INFORMATION PROVIDED HEREWITH REFLECTS THE LATEST AVAILABLE PROJECT INFORMATION AND THAT ALL G2T TRUSS LENGTHS CORRESPOND WITH ACTUAL FIELD DIMENSIONS PRIOR TO BEING RETURNED FOR FABRICATION.
- ALL BRACING SHOWN IS INTEGRAL TO THE G2T OPEN WEB TRUSS SYSTEM AND THESE TEMPORARY OR ERECTION BRACING. THE G2T OPEN WEB TRUSS WILL NOT SAFELY SUPPORT LOADS UNTIL FULLY BRACED, FULLY ATTACHED TO BEARING WALLS OR BEAMS, AND SHEATHING, BY OTHERS IS PROPERLY INSTALLED (SEE LAYOUTS AND DETAILS).
- POINT LOADS THAT EXCEED 100 LBS. AS INDICATED ON THE LAYOUT HEREIN.
- INSTALLATION OF G2T OPEN WEB TRUSSES MUST FOLLOW ANY ADDITIONAL REQUIREMENTS INDICATED ON THE LAYOUTS AND IN THE CALCULATIONS.
- ALL G2T OPEN WEB TRUSSES ARE DESIGNED FOR UNIFORM LOADS AND CONCENTRATED LOADS NOTED ON THESE DRAWINGS AND CALCULATIONS. TEMPORARY CONSTRUCTION LOADS WHICH CAUSE STRESSES BEYOND DESIGN CRITERIA ARE NOT PERMITTED.
- ALL 2X, 4X, 6X ETC. FRAMING TO BE SUPPLIED BY OTHERS, UNO. (FMBO).
- METAL STRAPS AND/OR TIES USED FOR SEISMIC PURPOSES THAT ARE NAILED TO THE TOP OF THE TOP CHORD ARE TO USE 10d NAILING AT NO LESS THAN 3" @ IN A ROW. ACCEPTABLE STRAPS FOR G2T TOP CHORDS ARE LTI, LSTI, MSTI AND PAL.
- G2T OPEN WEB TRUSS ARE NOT DESIGNED TO SUPPORT ANY FIRE SPRINKLER AND/OR MECHANICAL LOADS OTHER THAN WHAT IS SHOWN ON THESE SHOP DRAWINGS, AND OR WHAT HAS BEEN PROVIDED IN THE DESIGN DEAD LOAD(S).
- THE PLACEMENT OF THE MECHANICAL UNITS AND SPRINKLER MAINS ARE TO BE AS NOTED ON THESE SHOP DRAWINGS. THE SUPPORTING TRUSSES HAVE BEEN SPECIFICALLY DESIGNED TO ACCOMMODATE THESE ITEMS. ALL COMPONENTS TRANSFERRING LOADS TO THE TRUSSES SHALL BE DESIGNED AND INSTALLED IN ACCORDANCE WITH THE DETAILS CONTAINED WITHIN THESE DRAWINGS.
- G2T TRUSS DESIGNS ARE IN ACCORDANCE WITH THE CURRENT ADOPTED EDITION OF THE IBC, CBC, AND NATIONAL DESIGN SPECIFICATION, AND CONFORM TO CURRENT ICC-ES REPORT.



WARNING:

Drilling, sawing, sanding or machining wood products generates wood dust and other substances known to cause cancer. Avoid inhaling dust generated from wood products or use a dust mask or other safeguards for personal protection. Wood products emit chemicals known to cause birth defects or other reproductive harm.

LEGEND / ABBREVIATIONS

- SEE PROJECT PLANS FOR OTHER ABBREVIATIONS AND SYMBOLS USED.
- DETAIL (ON SHOP DRAWINGS)
 - PROJECT PLAN DETAIL (PER PLANS)
 - START G2T TRUSS
 - LAYOUT @ o/c SPACING
 - STRONGBACK LOCATION
 - DIRECTION OF ROOF SLOPE
 - FMBO = FRAMING MATERIAL BY OTHERS
 - VF = VERIFY IN FIELD
 - UNC = NOT IN CONTRACT
 - NIC = UNLESS NOTED OTHERWISE
 - FSML = FIRE SPRINKLER MAIN LINE
 - FIT = FACE TO FACE (CLEAR SPAN OF TRUSS)
 - MTL = MANUFACTURED TRUSS LENGTH
 - OTCL = OVERALL TOP CHORD LENGTH (SLOPE LENGTH)
 - LBS = POUNDS
 - PSF = POUNDS PER SQUARE FOOT
 - PLF = POUNDS PER LINEAL FOOT
 - MFR = MANUFACTURER
 - > = GREATER THAN (< = LESS THAN)
 - o/c = ON CENTER (SPACING)
 - B/M = BILL(S) OF MATERIAL (8 1/2 x 11 SHEETS)
 - DBL = DOUBLE MEMBER (TPL = TRIPLE MEMBER)

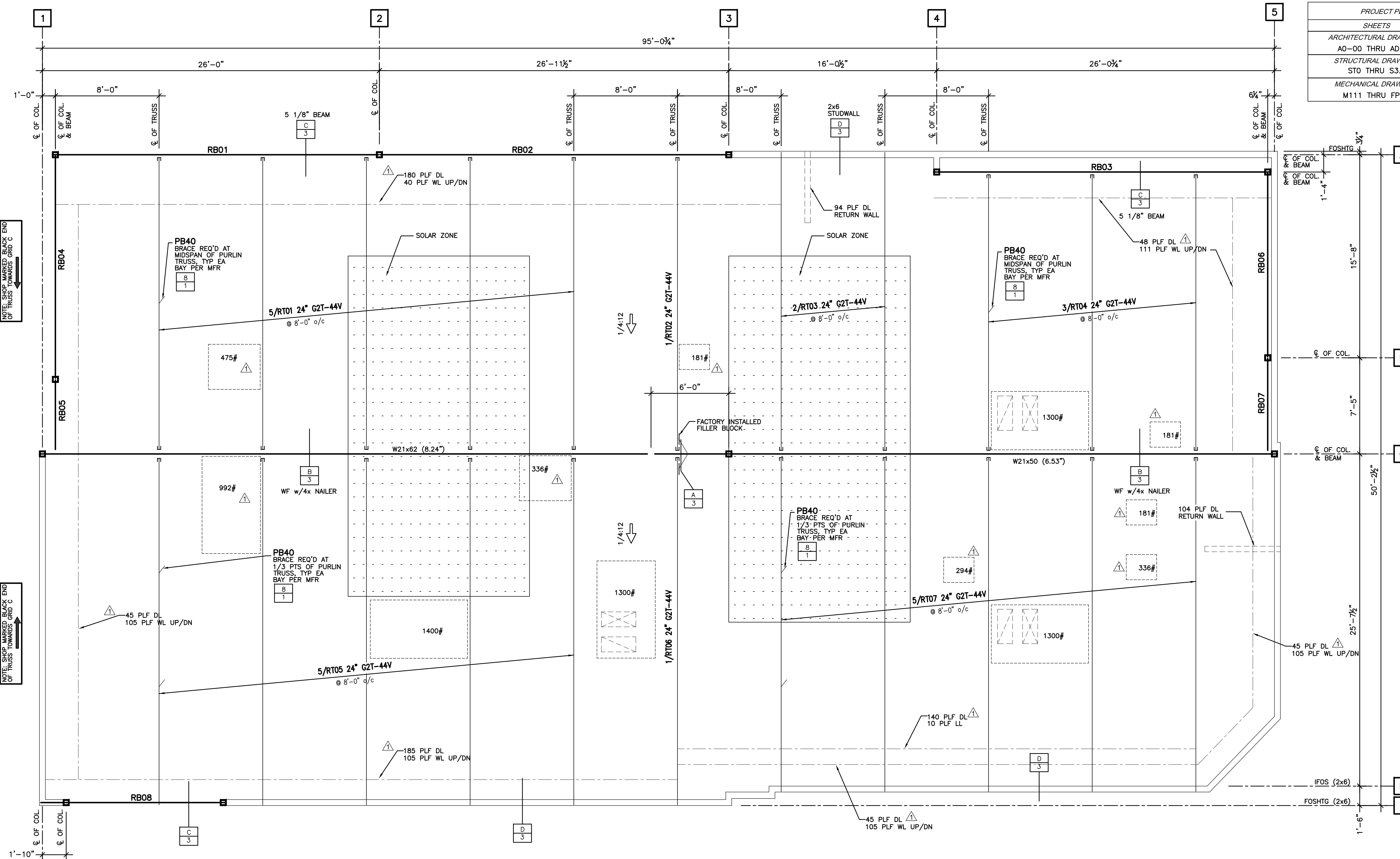
REVISIONS	DATE	DESCRIPTION
1		
2		
3		
4		
5		

STORM PLAZA (G)
NW CORNER OF SEPULVEDA BLVD & NORMANDIE
TORRANCE, CA 90501

ENGINEER ARCHITECT
ANF STRUC INC
624-48-8182
KTEY GROUP INC
949-861-2133

STRUCTURAL
G2
G2 STRUCTURAL LLC
4726 S. CONTRACTORS WAY, TUCSON, AZ 85714

06/07/2017
PN-12786
SHEET
1 OF 3



PROJECT PLANS USED:	
SHEETS	DATE
ARCHITECTURAL DRAWINGS A0-00 THRU AD-04	03/30/17
STRUCTURAL DRAWINGS ST0 THRU S3.1	03/30/17
MECHANICAL DRAWINGS M111 THRU FP-1	03/24/17

DESIGN LOADS		
	ROOF	
LIVE LOAD	20	PSF
PART LOAD	-	PSF
DEAD LOAD	19	PSF
TOTAL LOAD	39	PSF

DESIGN DEFLECTION:
 $\Delta_{LL} \leq L/240$ $\Delta_{TL} \leq L/180$

LOAD DURATION FACTOR = 1.25
 DESIGN CODE: CBC 2013
 DEAD LOAD BREAKDOWN: 15 PSF TC, 4 PSF BC
 110 MPH WIND, EXP. C
 NET WIND UPLIFT: 10 PSF
 - ROOF LIVE LOAD REDUCIBLE PER CODE.
 - ADDITIONAL 1000# MISC. POINT LOAD OCCURRING AT ANY ONE TOP CHORD PANEL POINT ALONG THE SPAN, CONCURRENT WITH UNIFORM DEAD LOAD AND LIVE LOAD ONLY.
 - SOLAR ZONE ALLOWANCE IS INCLUDED IN THE DESIGN CRITERIA

NOTE: SPRINKLER LINES GREATER THAN 3" DIAMETER HAVE NOT BEEN CONSIDERED IN THE TRUSS DESIGNS

ROOF PRODUCT PLACEMENT PLAN

(REF: S2.0)
SCALE: 1/4" = 1'-0"

26F-V5 INDUSTRIAL APPEARANCE UNO 14% MOISTURE CONTENT					
QTY	MARK	WIDTH	DEPTH	LENGTH	CAMBER
1	RB01	5 1/8"	22 1/2"	25'-6"	3/4"
1	RB02	5 1/8"	22 1/2"	27'-6"	1 3/8"
1	RB03	5 1/8"	22 1/2"	26'-6"	1 3/8"
1	RB04	5 1/8"	15"	18'-0"	1/2"
1	RB05	5 1/8"	15"	6'-0"	1600'
1	RB06	5 1/8"	15"	15'-0"	1/2"
1	RB07	5 1/8"	15"	7'-6"	1600'
1	RB08	5 1/8"	16 1/2"	14'-6"	1600'

G2T TRUSS LIST						
MARK	QTY	CLR SPAN	MFR LENGTH	DEPTH	HANGER (BLACK END)	HANGER (OTHER END)
RT01	5	22'-6 5/16"	22'-5 9/16"	24" G2T-44V	BHV413X	BHV413X
RT02	1	22'-7 3/16"	22'-6 7/16"	24" G2T-44V	BHV413X	BHV413X
RT03	2	22'-7"	22'-11 5/8"	24" G2T-44V	BHV413X	-
RT04	3	21'-3 3/16"	21'-2 7/16"	24" G2T-44V	BHV413X	BHV413X
RT05	5	26'-3 3/8"	26'-8"	24" G2T-44V	BHV413X	-
RT06	1	26'-4 1/4"	26'-8 7/8"	24" G2T-44V	BHV413X	-
RT07	5	25'-4 1/4"	25'-8 7/8"	24" G2T-44V	BHV413X	-

TOBIN STEEL CONNECTORS ESR-1822					
QTY	MARK	DESCRIPTION	NAILING		REMARKS
			HEADER	JOIST	
31	RH01	TGLT313X,H=14" W=3 5/8"	10-N54	6-16d	SINGLE

MISC. MATERIAL LIST		
ITEM	QTY	USE
PB40	33	STD G2T B/C BRACING (SEE DETAIL 8/1)

REVISIONS	
NO.	DESCRIPTION
1	8-4-17 Per approved drawings and revised project plans

STORM PLAZA (G)
 NW CORNER OF SEPULVEDA BLVD & NORMANDIE
 TORRANCE, CA 90501

ENGINEER
 ANF STRUCTURAL ENGINEERS
 626-448-8182

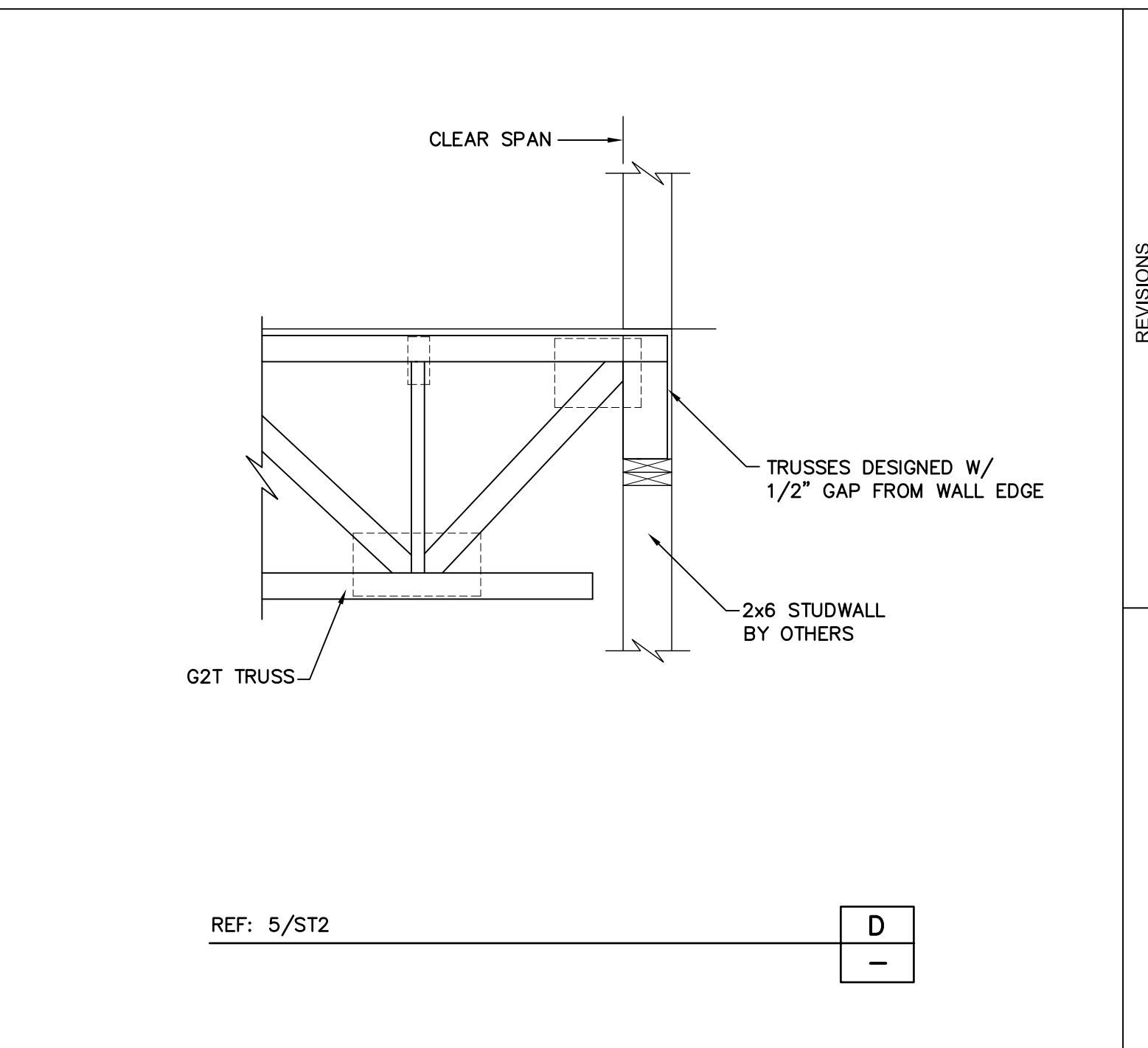
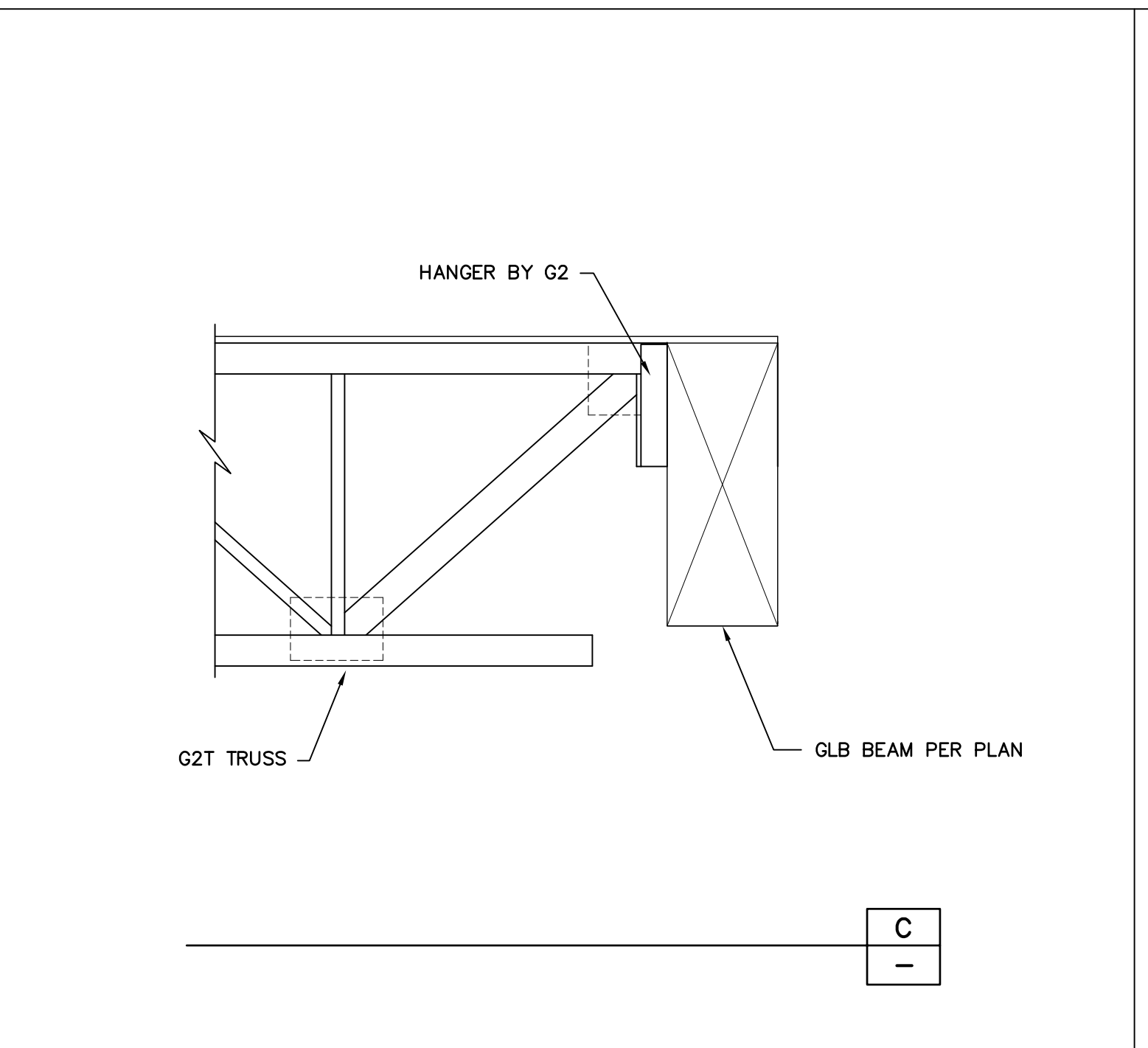
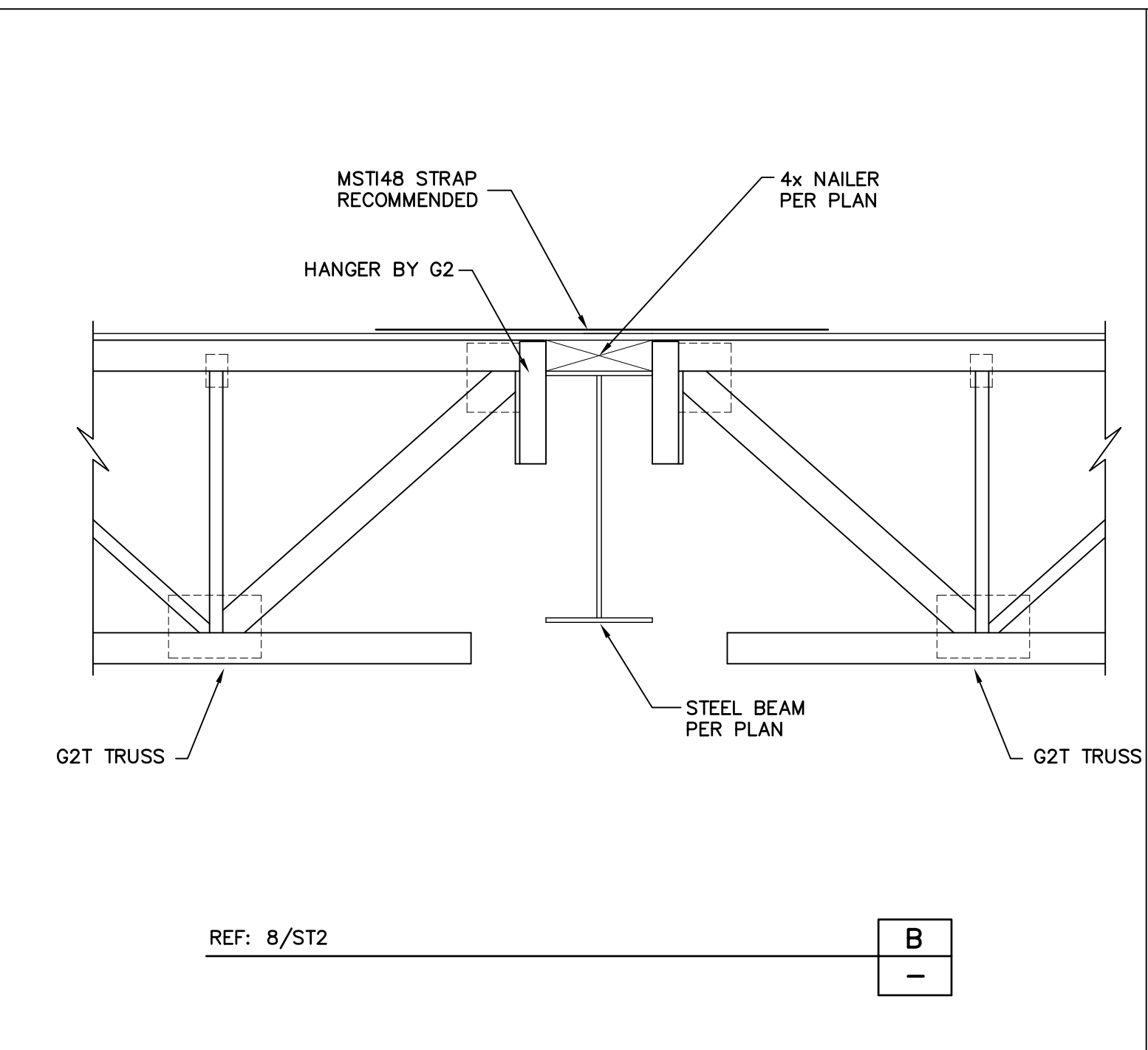
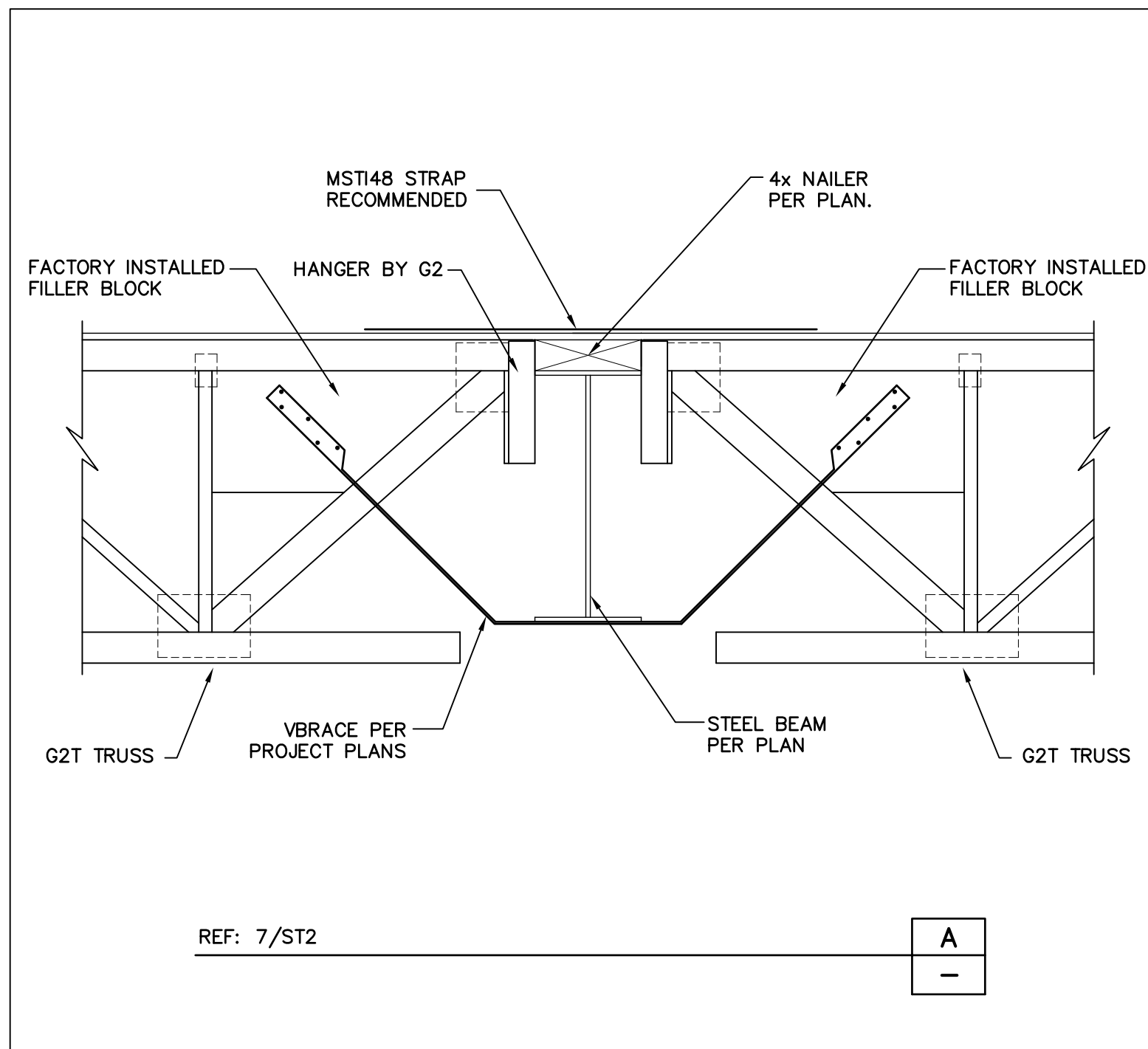
ARCHITECT
 KTEY GROUP INC.
 949-851-7133

CUSTOMER
 GANAH LUMBER
 562-348-2100



06/07/2017
 PN-12786
 SHEET
 2 OF 3

REVISED FOR CONSTRUCTION



REVISIONS	
Δ	8-14-17 Per approved drawings and revised project plans
Δ	
Δ	
Δ	
Δ	

STORM PLAZA (G)
 NW CORNER OF SEPULVEDA BLVD & NORMANDIE
 TORRANCE, CA 90501

ENGINEER ARCHITECT
 ANF STRU
 628-448-8122
 KTOX GROUP, INC.
 949-851-2133
 CUSTOMER
 GANAHIL LUMBER
 562-346-2100

G2 STRUCTURAL
 G2 STRUCTURAL LLC.
 4725 S. CONTRACTORS WAY, TUCSON, AZ 85714

PN-12786
 SHEET
 3 OF 3

REVISED FOR CONSTRUCTION